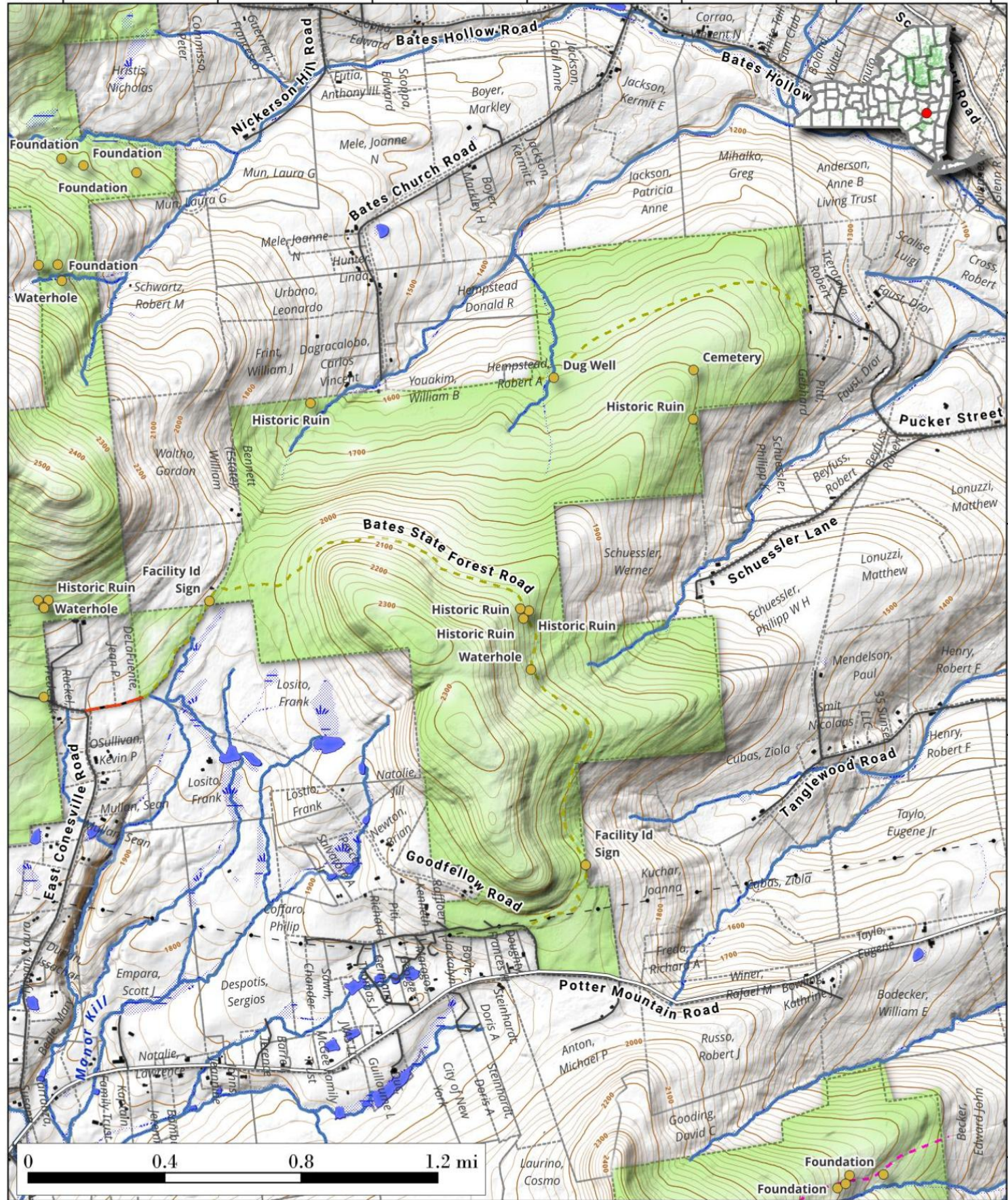


Bates State Forest.

1,310 acres in the Northern Catskills / Southern Schoharie outside of Potters Hollow. There are two old woods roads crossing this forest with several pull off but no developed campsites or trails.
Map created by Andy Arthur on 8/19/2024 in QGIS 3.34.9-Prizren. Contains DEC Trails/Assets, Additional Campsites/Trails by Andy other data ©OpenStreetMap Data, OSM Maintainers. More maps at andyarthur.org.



-74.31 -74.30 -74.29 -74.28 -74.27 -74.26 -74.25



42.44
42.43
42.42
42.42
42.41
42.40