

# Basswood and Wiley Brook State Forests.

Basswood State Forest covers 938 acres. Wiley Brook State Forest is 1,240 acres in size. Basswood has a lean-to along the Finger Lakes Trail while Wiley Brook has a designated primitive campsite along the pond. Map is projected in Web Mercator 3857 and is 1: scale, True North. 20 foot contours. Created by Andy Arthur on 9/25/2023 in QGIS 3.32. Contains DEC Trails/Assets, Additional Campsites/Trails by Andy other data ©OpenStreetMap Data, OSM Maintainers. More maps at [andyarthur.org](http://andyarthur.org).



-75.60

-75.59

-75.57

-75.56

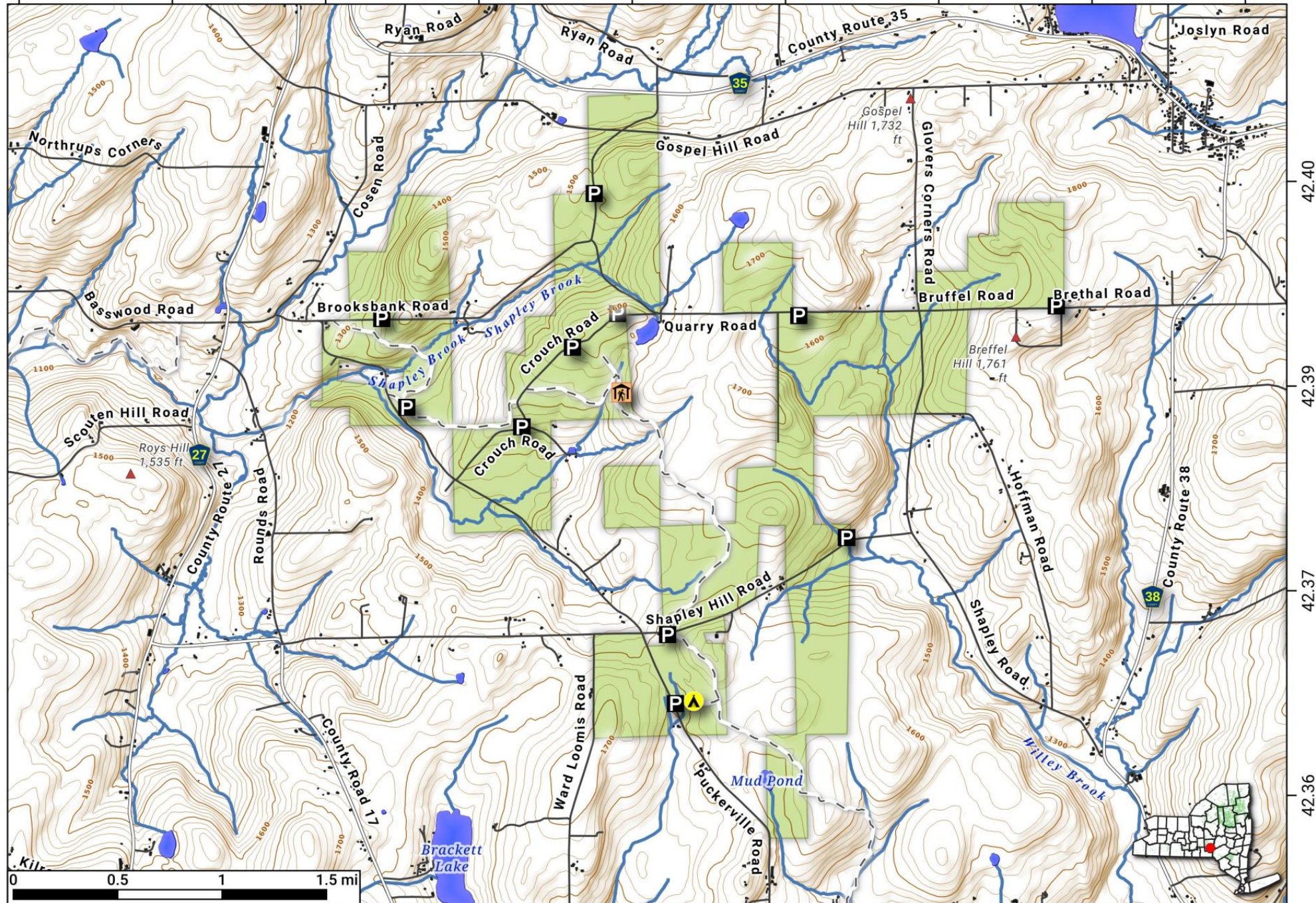
-75.54

-75.53

-75.51

-75.50

-75.49



42.40

42.39

42.37

42.36