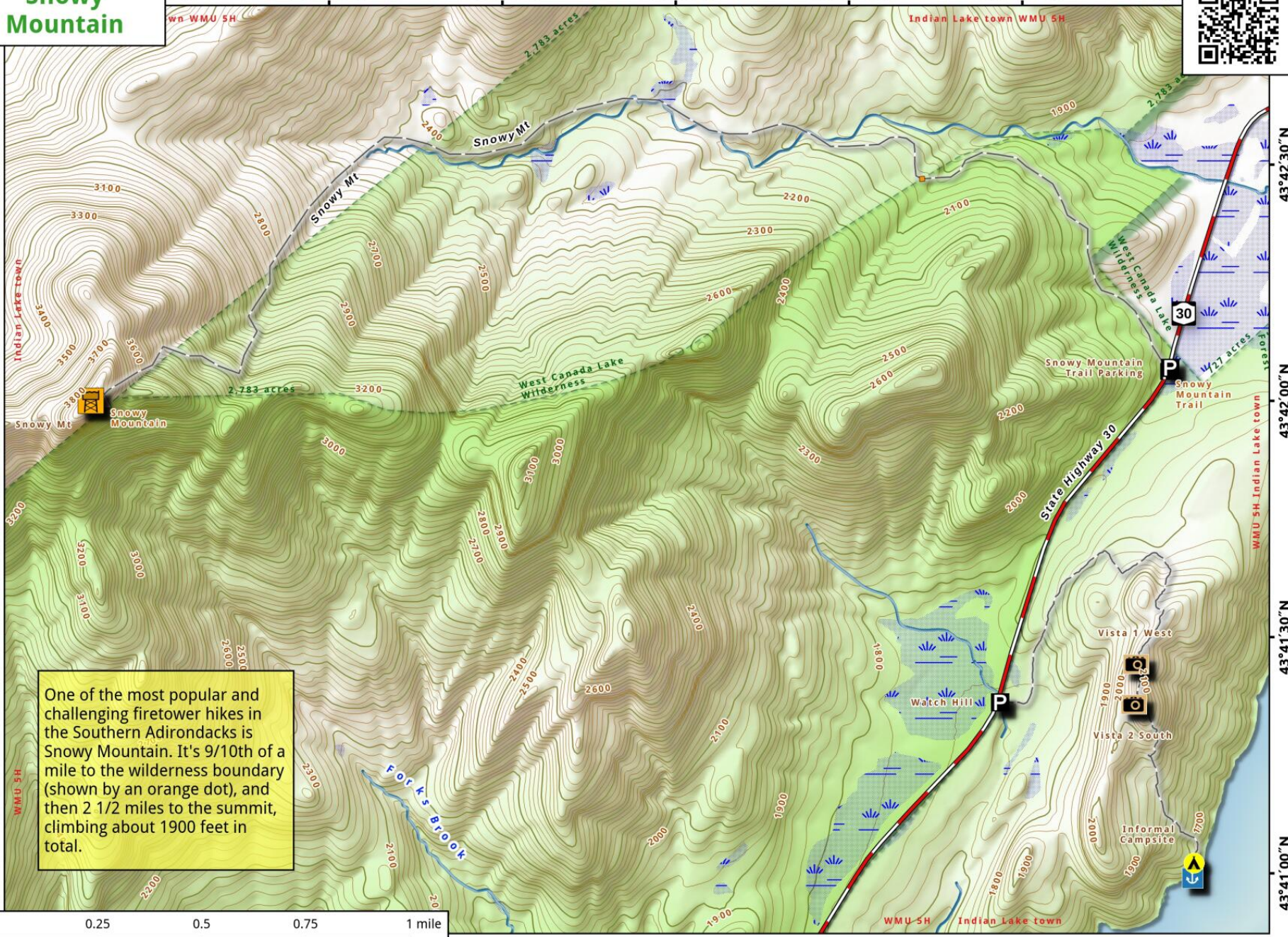


Snowy Mountain

74°22'30"W 74°22'00"W 74°21'30"W 74°21'00"W 74°20'30"W 74°20'00"W



43°42'30"N
43°42'00"N
43°41'30"N
43°41'00"N

One of the most popular and challenging firetower hikes in the Southern Adirondacks is Snowy Mountain. It's 9/10th of a mile to the wilderness boundary (shown by an orange dot), and then 2 1/2 miles to the summit, climbing about 1900 feet in total.

