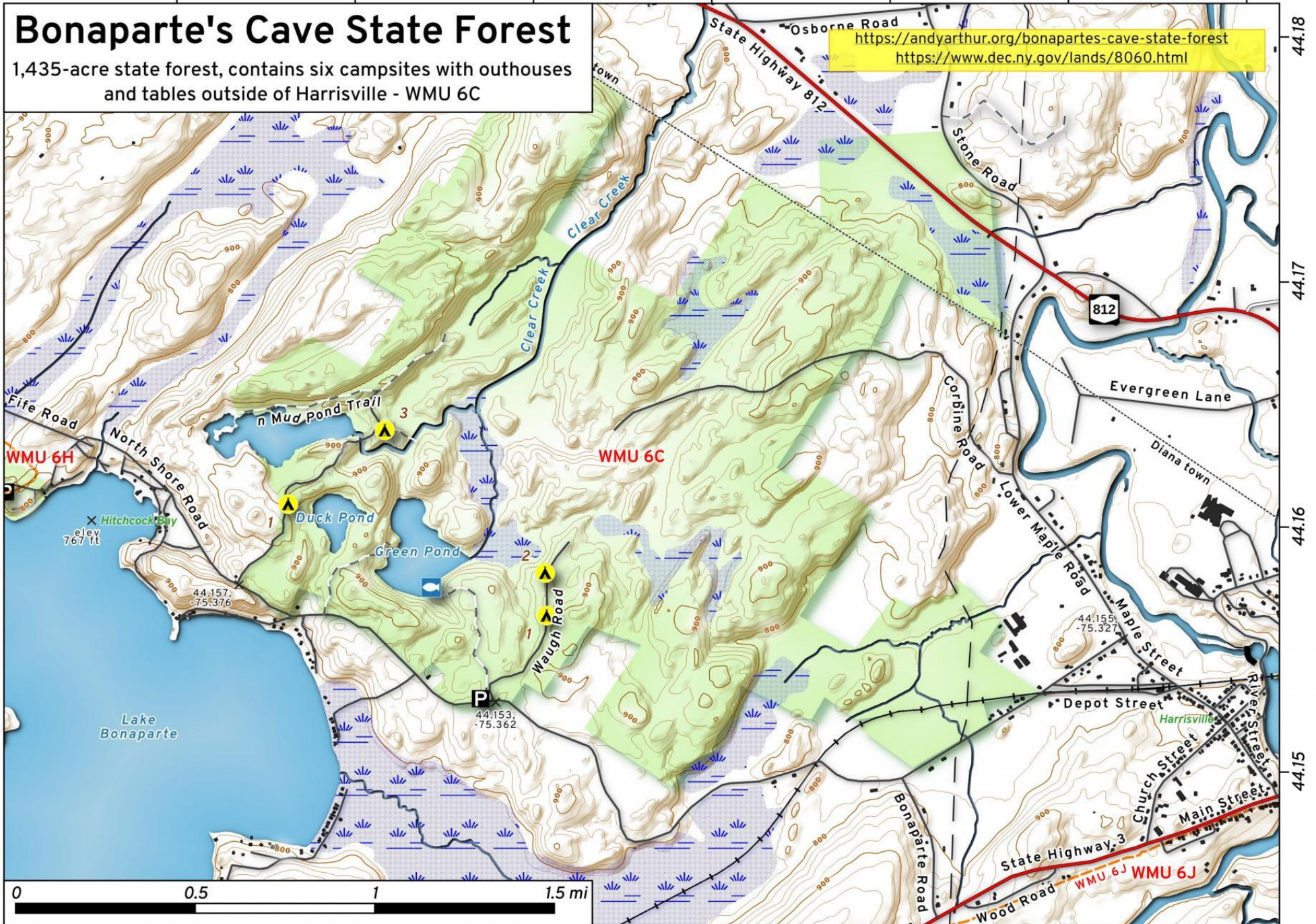


# Bonaparte's Cave State Forest

1,435-acre state forest, contains six campsites with outhouses and tables outside of Harrisville - WMU 6C

<https://andyarthur.org/bonapartes-cave-state-forest>  
<https://www.dec.ny.gov/lands/8060.html>



Bonaparte's Cave State Forest Map, February 8, 2022 by AndyArthur.org in QGIS 3.22.2-Białowieża and Python. Street Map is Copyright © OpenStreetMap contributors, CC BY-SA. NYSDEC Data: LiDAR/DEM, Borders, ADK Wetlands, Trails, Assets. True North. 1 inch = 0.3 miles. Projection: NAD83 / UTM zone 18N. Coordinates: 0.01° latitude-longitude (WGS84). Contours are 20 feet. Map is centered on 44.1624,-75.3538.