

Clapper Hollow State Forest.

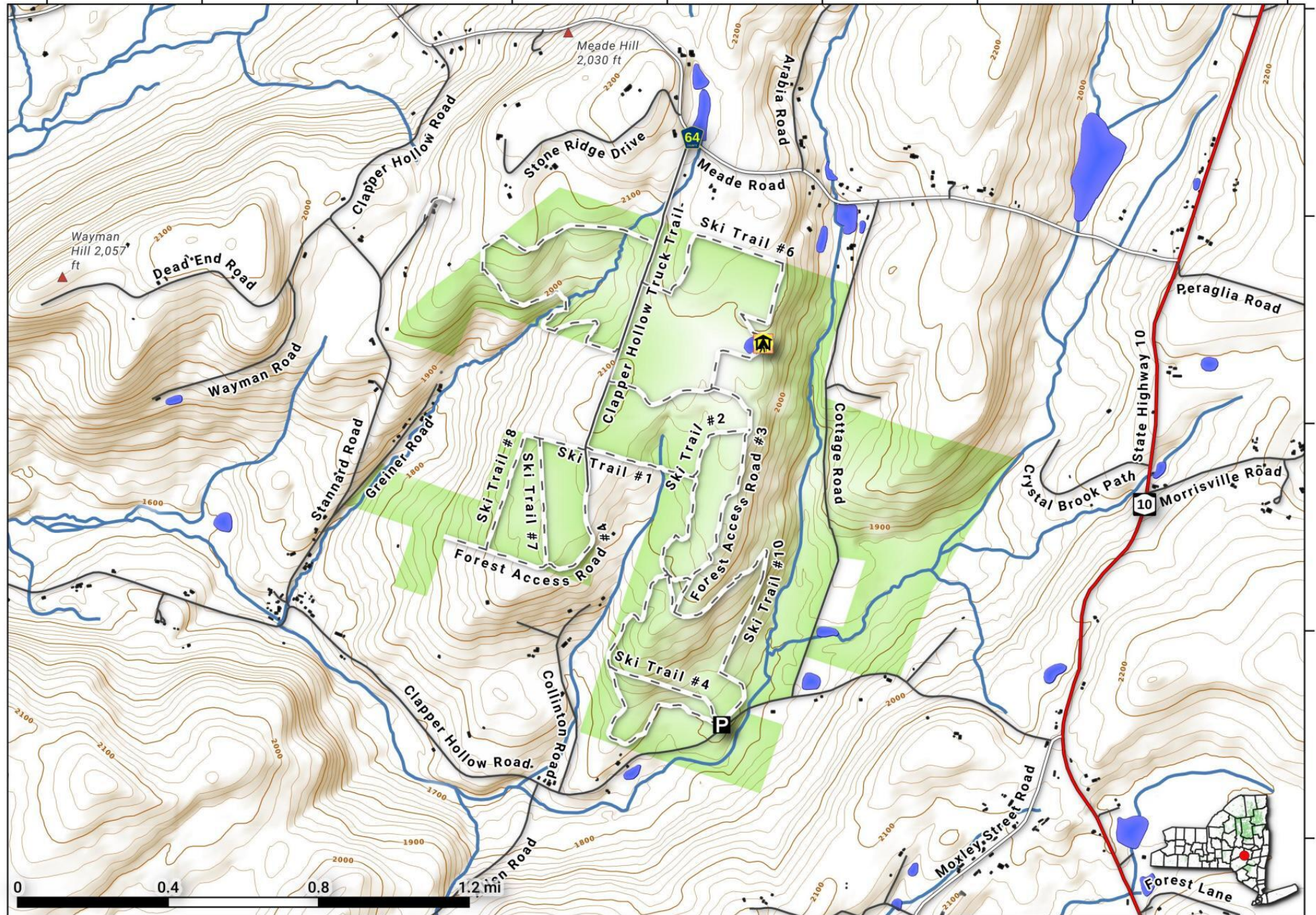
State Forest located in south-western Schoharie County outside of Summit with a lean-to/campsite on a small pond.

Map is projected in Web Mercator 3857 and is 1:21,000 scale, True North. 20 foot contours. Yellow areas are non-state owned park/preserve, special rules may apply.

Created by Andy Arthur on 10/2/2022 in QGIS 3.26. Contains DEC Trails/Assets, Additional Campsites/Trails by Andy other data ©OpenStreetMap Data, OSM Maintainers. More maps at andyarthur.org.



-74.68 -74.67 -74.66 -74.66 -74.65 -74.64 -74.63 -74.62 -74.61



42.54
42.53
42.52
42.51