

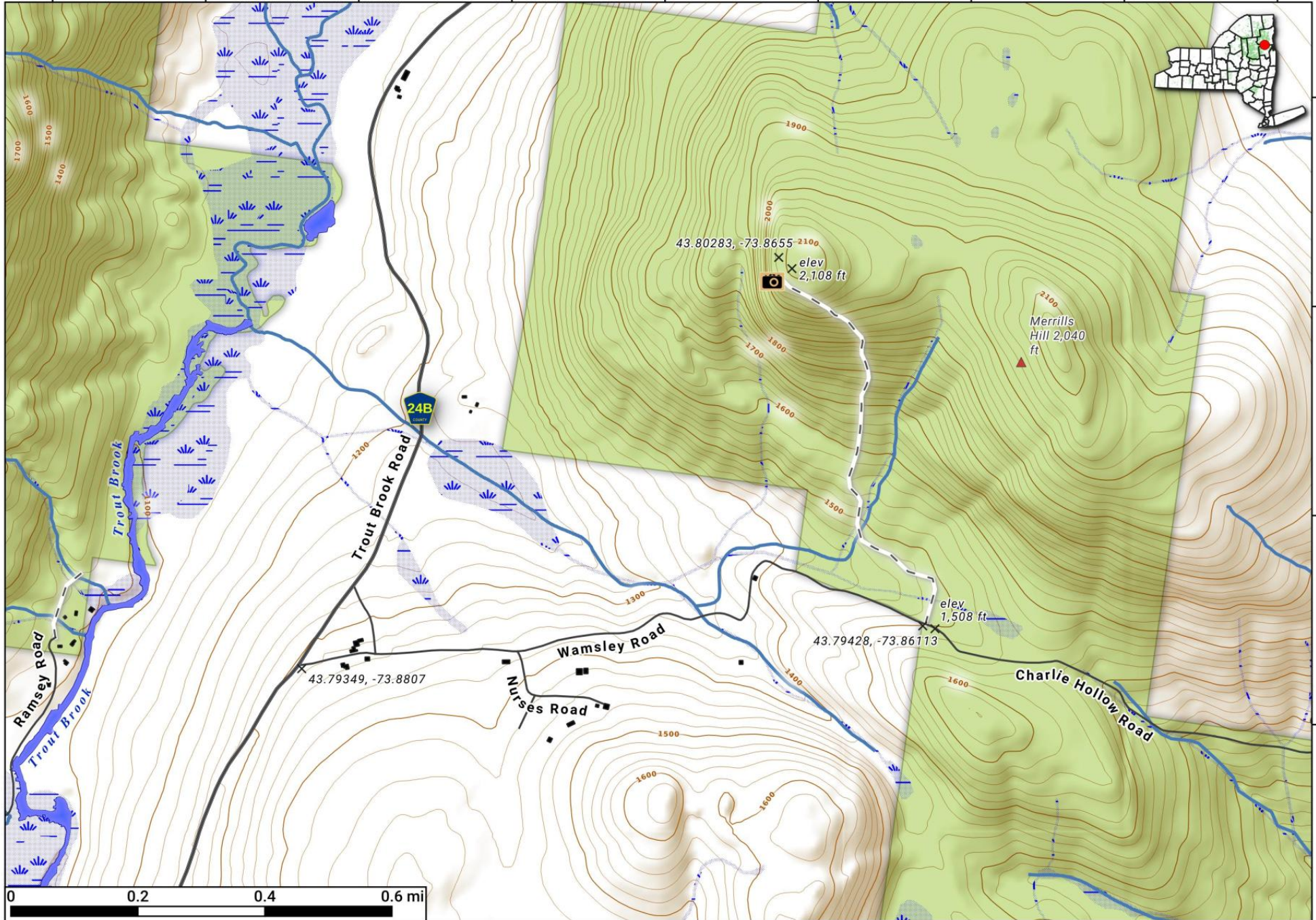
**Merill's Hill Trail.** 8/10th of a mile trail to a ledge looking west off of Trout Brook and Charlie Hollow Road outside of Scroon Lake.

Photos and more info here: <http://tinyurl.com/merrills-hill>

Map created by Andy Arthur on 12/28/2023 in QGIS 3.34.1-Prizren. Contains DEC Trails/Assets, Additional Campsites/Trails by Andy other data ©OpenStreetMap Data, OSM Maintainers. More maps at [andyarthur.org](http://andyarthur.org).



-73.89      -73.88      -73.88      -73.87      -73.87      -73.86      -73.86      -73.85      -73.85



43.81  
43.80  
43.80  
43.79