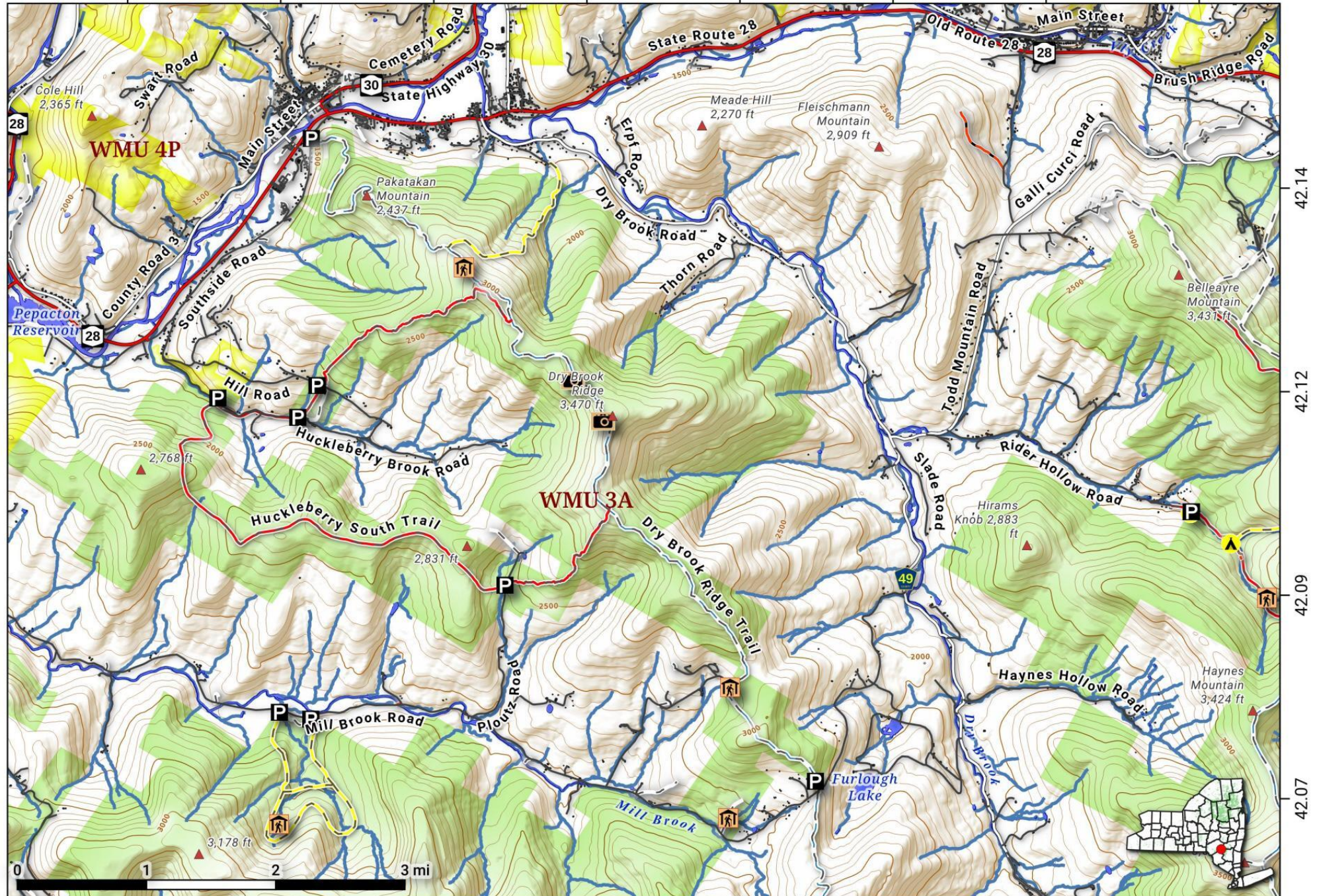


Dry Brook Ridge Trail. Hiking trail that runs from Margaretville down to Mill Brook Road.

Map is projected in Web Mercator 3857 and is 1:60,000 scale, True North. 50 foot contours. Yellow areas are non-state owned park/preserve, special rules may apply.

Created by Andy Arthur on 10/2/2022 in QGIS 3.26. Contains DEC Trails/Assets, Additional Campsites/Trails by Andy other data ©OpenStreetMap Data, OSM Maintainers. More maps at andyarthur.org.

-74.68 -74.65 -74.63 -74.61 -74.58 -74.56 -74.54 -74.52



42.14
42.12
42.09
42.07