

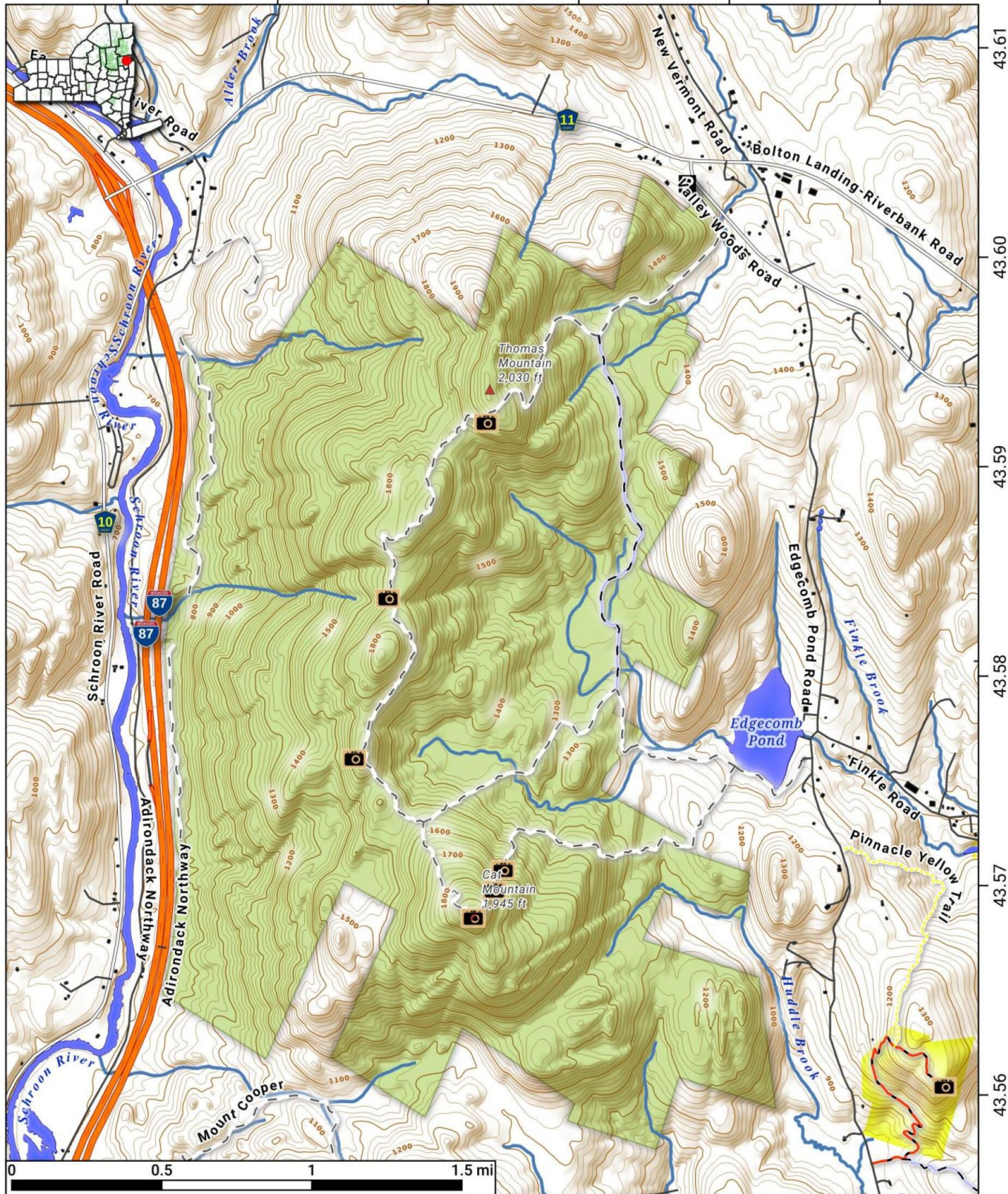
# Cat and Thomas Mountain.

The 1,920 acre Cat and Thomas Mountain Preserve offers excellent views of Lake George and some of the Southeastern Adirondacks.

Map is projected in Web Mercator 3857 and is 1:56,000 scale, True North. 20 foot contours. Yellow areas are non-state owned park/preserve, special rules may apply. Created by Andy Arthur on 3/7/2023 in QGIS 3.28. Contains DEC Trails/Assets, Additional Campsites/Trails by Andy other data ©OpenStreetMap Data, OSM Maintainers. More maps at [andyarthur.org](http://andyarthur.org).



-73.73      -73.72      -73.71      -73.70      -73.69      -73.68



43.61  
43.60  
43.59  
43.58  
43.57  
43.56

0      0.5      1      1.5 mi