

Natural Rock Dam Trail.

At end of Rock Dam Road (opens in July) there is a 2 mile hike to a "natural" dam and opening along the North Branch of the Moose River. Scenic views, fishing spot.

Map created by Andy Arthur on 10/17/2024 in QGIS 3.34.11-Prizren. Contains US Forest Service Base Map. NYS DEC Data. More maps at andyarthur.org.



-74.82

-74.81

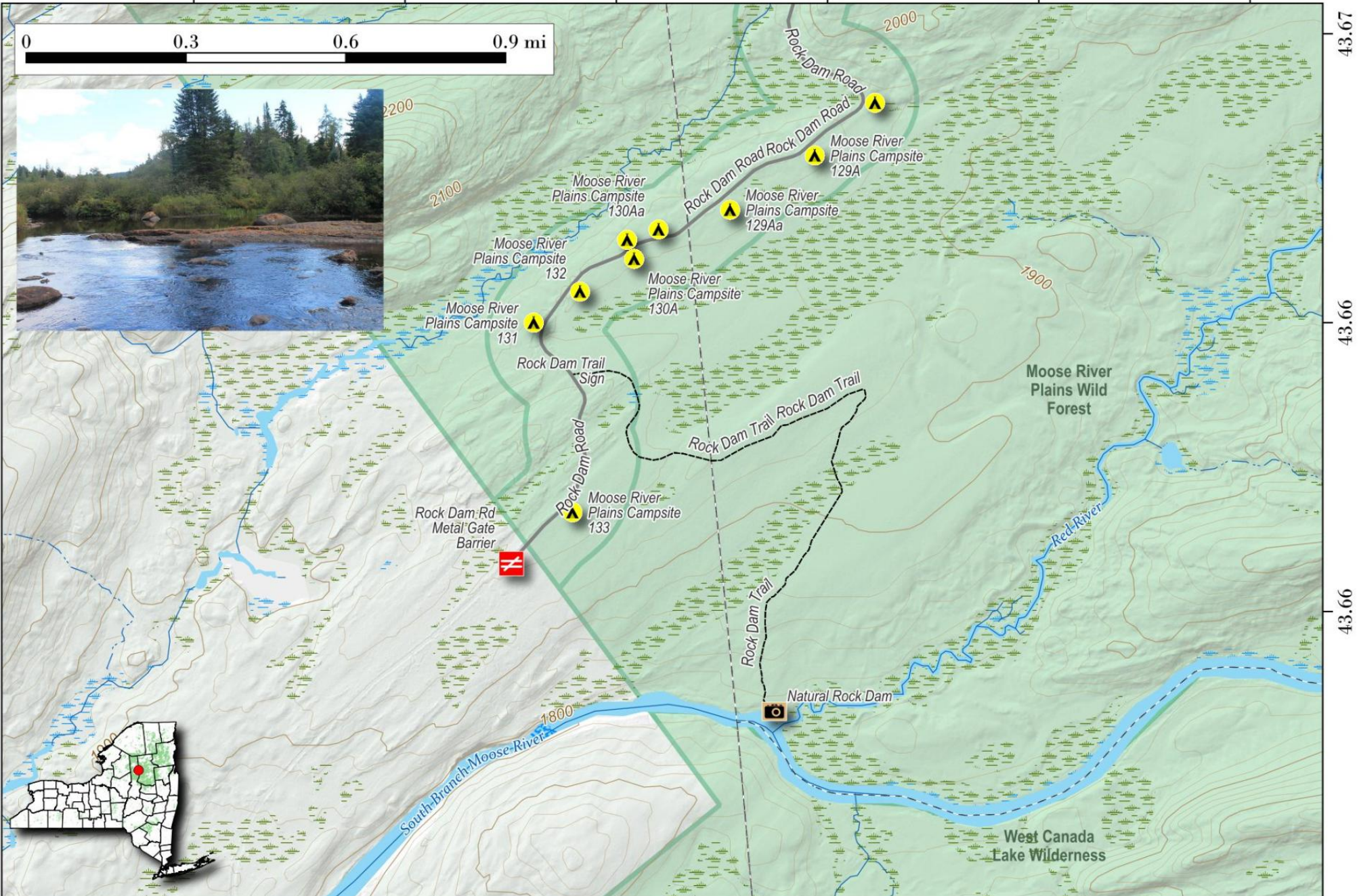
-74.80

-74.79

-74.79

-74.78

0 0.3 0.6 0.9 mi



43.67

43.66

43.66