

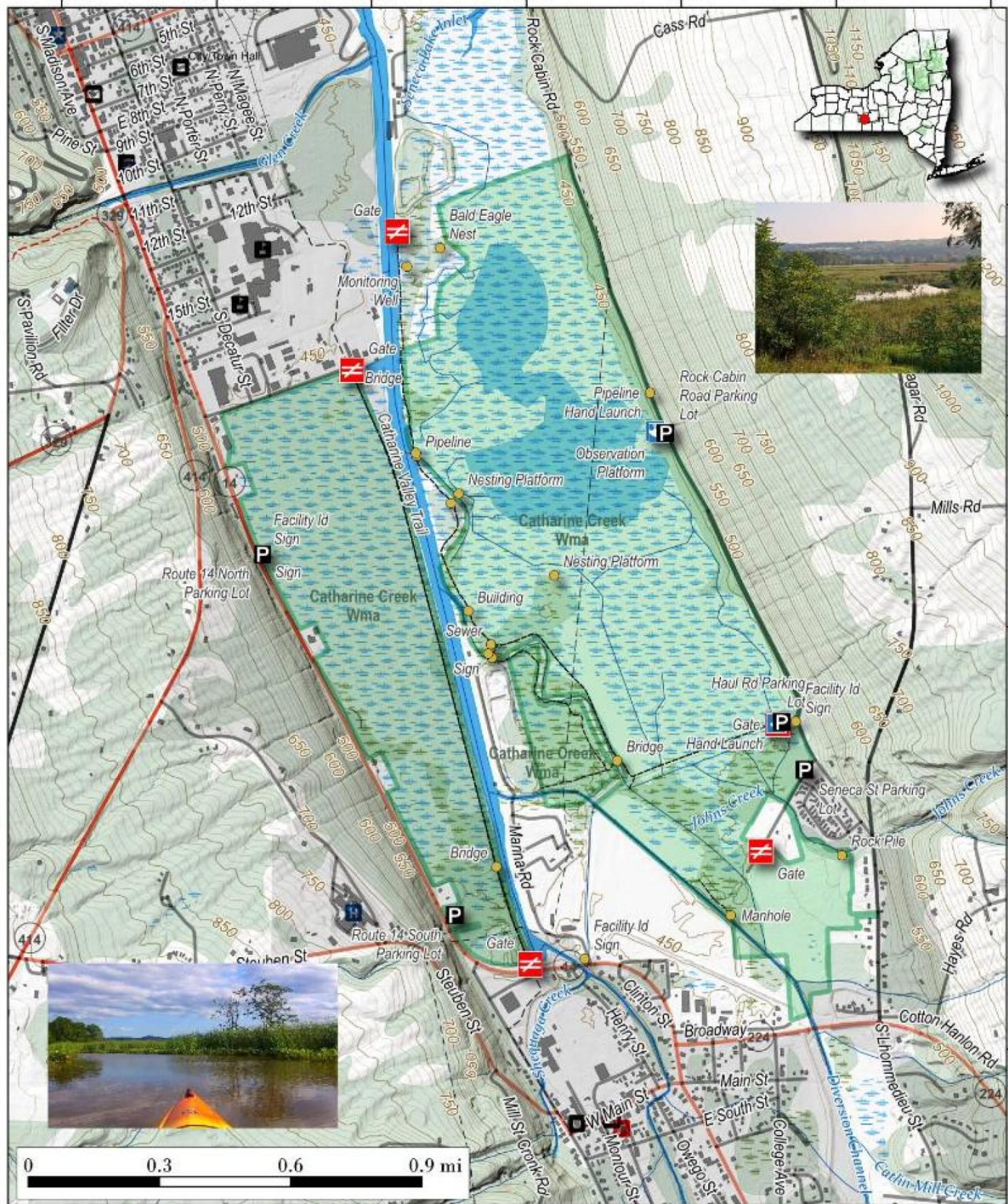
Catharine Creek Marsh.

Birding site, wildlife management area in marshlands south of Watkins Glen crossed by Catharine Creek Trail and bordered by Rock Cabin Road (great road for birding), with trails as shown on the map.



Map created by Andy Arthur on 10/16/2024 in QGIS 3.34.11-Prizren. Contains DEC Trails/Assets, Additional Campsites/Trails by Andy other data ©OpenStreetMap Data, OSM Maintainers. More maps at andyarthur.org.

-76.87 -76.87 -76.86 -76.85 -76.85 -76.84 -76.84 -76.83



42.38
42.37
42.36
42.36
42.35