

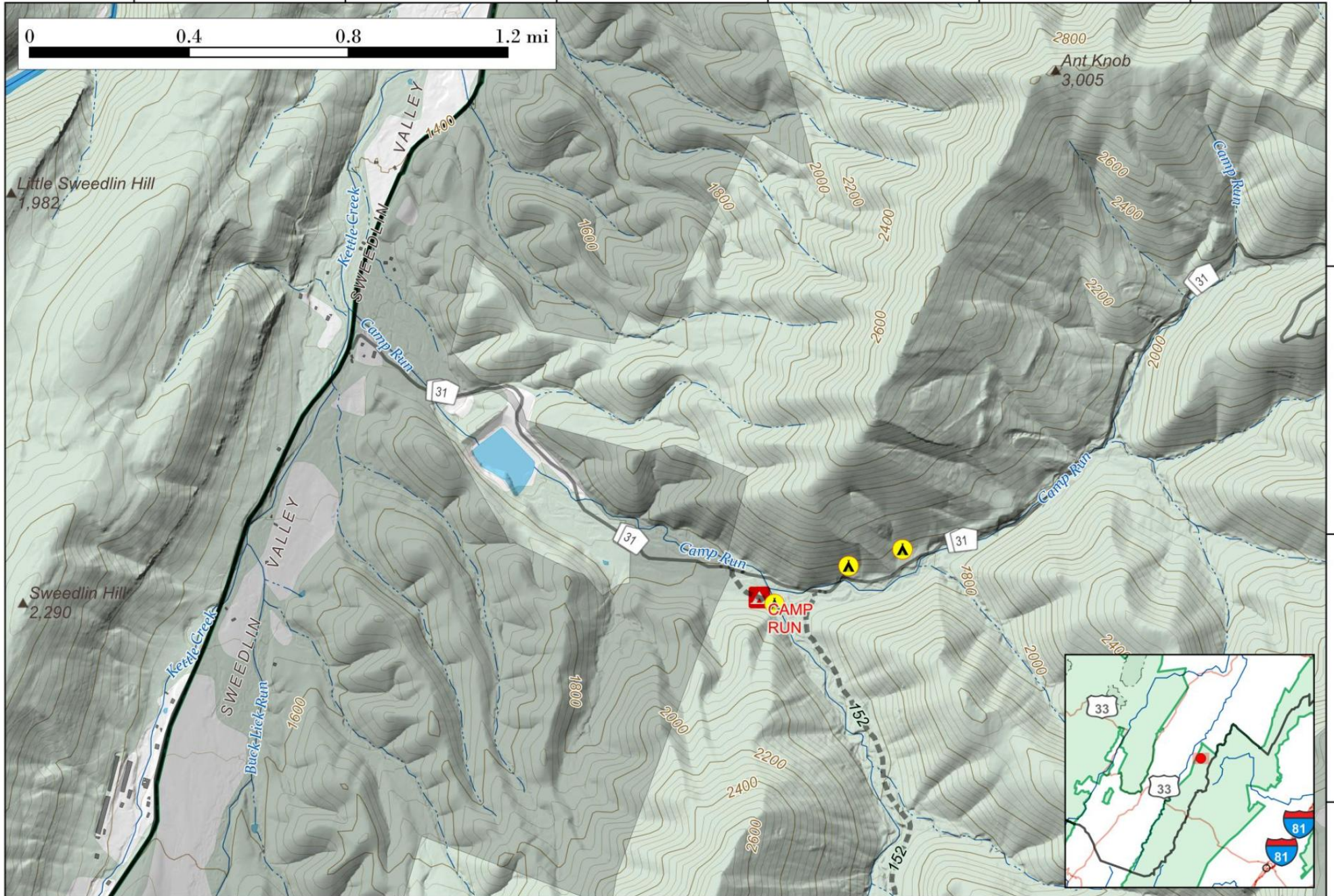
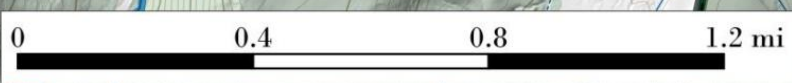
Camp Run.

Nestled along a Shenandoah Mountain drainage in Pendleton County, WV it is located about 15 miles north of Brandywine. Free camping with pit privy outhouses, tent platforms and a scenic reservoir for fishing. Hiking along the road over Shenandoah Mountain is quite enjoyable in the autumn months.

Map created by Andy Arthur on 10/16/2024 in QGIS 3.34.11-Prizren. Contains US Forest Service Base Map, Additional Campsites/Trails by Andy. More maps at andyarthur.org.



-79.14 -79.13 -79.12 -79.11 -79.10 -79.09



38.76

38.75

38.74