

73°15' 07°30' 73°00' 52°30' 72°45'

44° 15' 07° 30' 44° 00' 52° 30' 43° 45'

1 1

2 2

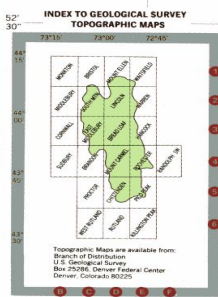
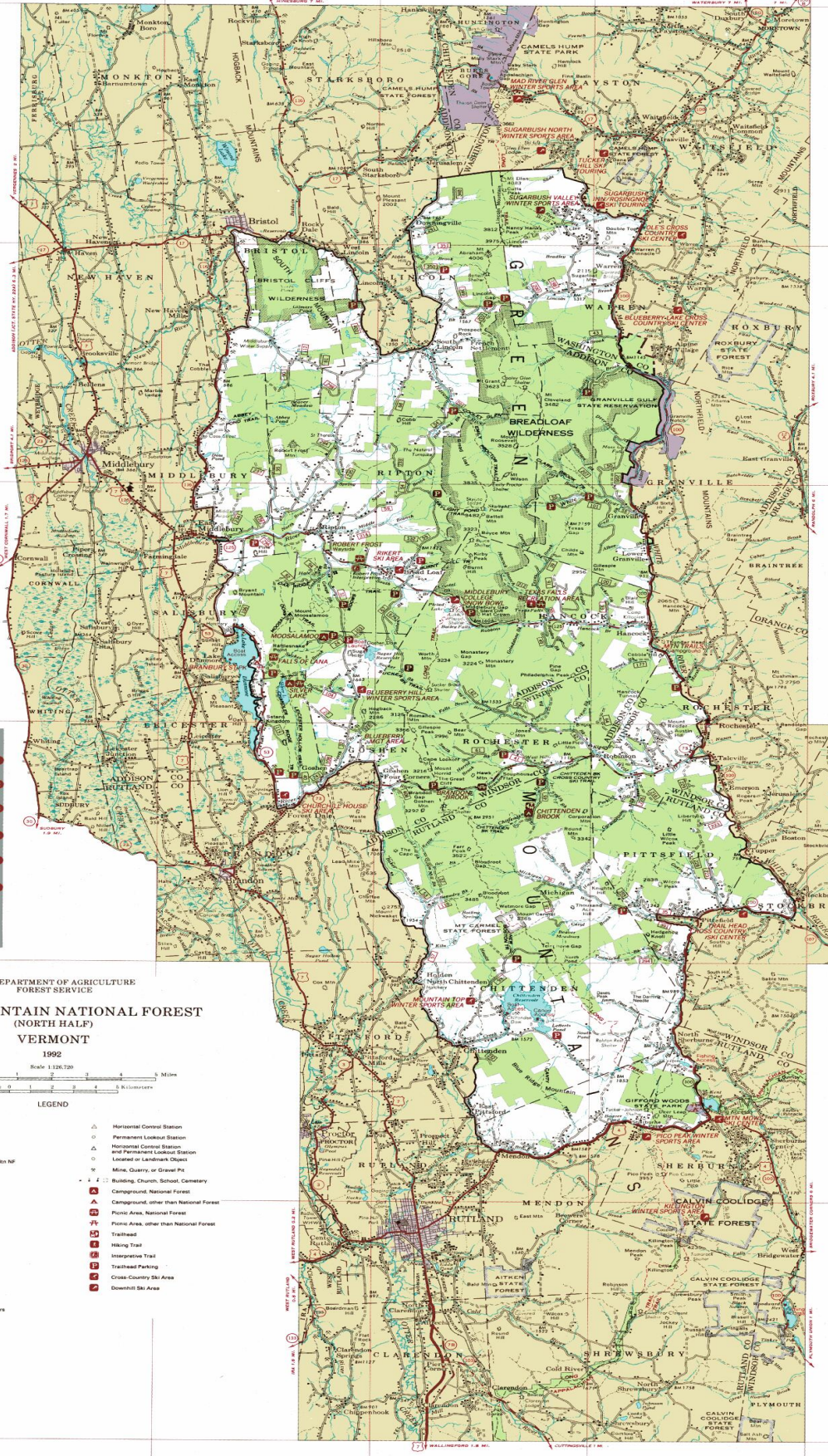
3 3

4 4

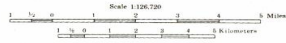
5 5

6 6

43° 30'



U.S. DEPARTMENT OF AGRICULTURE FOREST SERVICE GREEN MOUNTAIN NATIONAL FOREST (NORTH HALF) VERMONT 1992



LEGEND

- National Forest Boundary
- Purchase Limit Boundary
- National Forest Land
- ▨ Appalachian Trail Corridor
- ▨ State Park Land
- Primary Highway
- Secondary Highway
- Improved Light Duty
- Unimproved Dirt
- Trail
- U.S. Highway
- State Highway
- Forest Route
- Railroad
- Power Transmission Line
- Trail Station
- District Ranger Office
- Forest Supervisor Headquarters

- △ Horizontal Control Station
- △ Permanent Lookout Station
- △ Horizontal Control Station and Permanent Lookout Station
- Located or Landmark Object
- Mine, Quarry, or Gravel Pit
- Building, Church, School, Cemetery
- Campground, National Forest
- Campground, other than National Forest
- Picnic Area, National Forest
- Picnic Area, other than National Forest
- Trailhead
- Hiking Trail
- Interpretive Trail
- Trailhead Parking
- Cross-Country Ski Area
- Downhill Ski Area

KEY MAP



FOREST SERVICE
Compiled at the Regional Office, Milwaukee, Wisconsin, 1974 from
U.S. Geological Survey quadrangles. Revised in 1992 by the USDA
Forest Service, Geospatial Services Center, Salt Lake City, Utah,
from 1991 correction guides.

07°30' 73°00' 52°30' 72°45' 1927 North American datum