

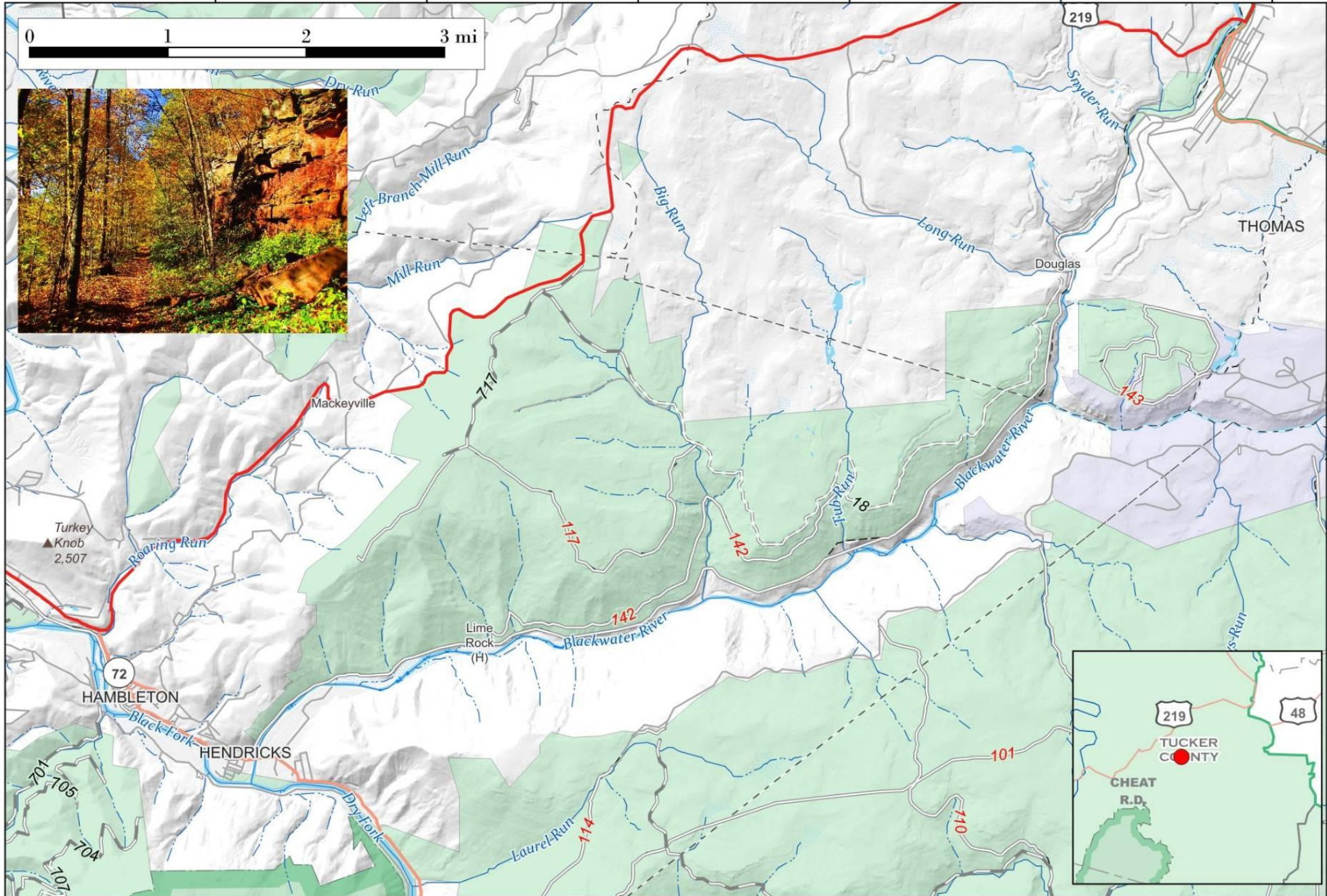
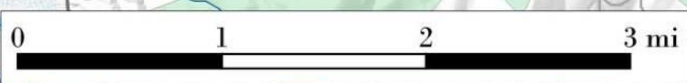
Blackwater Canyon Trail.

10.7 mile trail that follows a steep railway grade down the Blackwater Canyon from Coketon/Thomas to Hendricks, WV.



Map created by Andy Arthur on 10/17/2024 in QGIS 3.34.11-Prizren. Contains US Forest Service Base Map and campsites added by Andy. More maps at andyarthur.org.

-79.63 -79.61 -79.58 -79.55 -79.52 -79.49



39.13

39.11

39.08