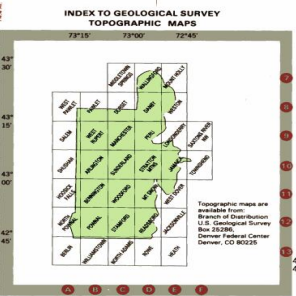
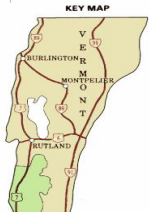
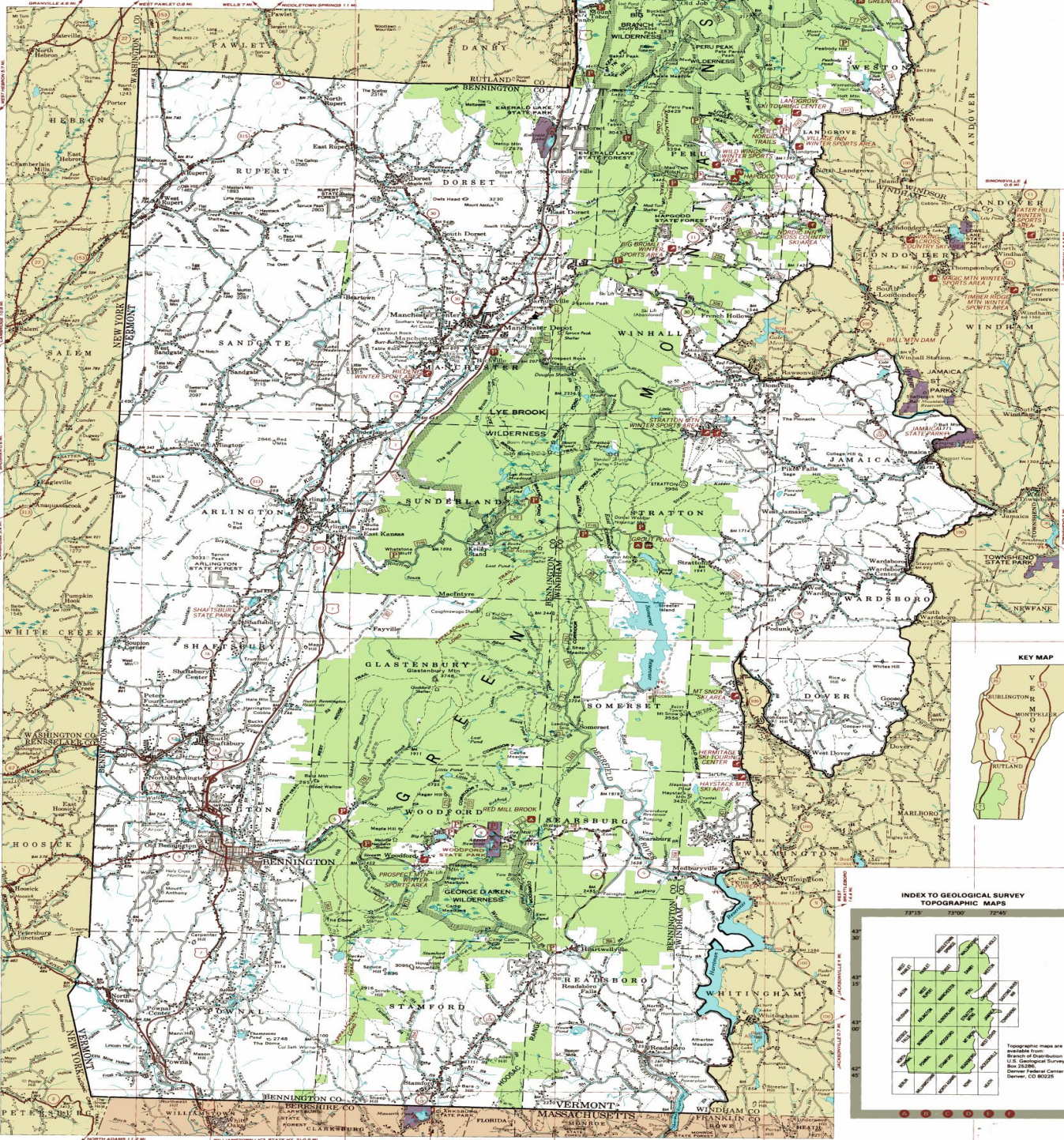


U.S. DEPARTMENT OF AGRICULTURE
FOREST SERVICE
GREEN MOUNTAIN NATIONAL FOREST
VERMONT
(SOUTH HALF)
1992

Scale 1:250,000
0 1 2 3 4 5 Miles
0 1 2 3 4 5 Kilometers

LEGEND

- | | | | |
|--|--------------------------------|--|--|
| | National Forest Boundary | | Horizontal Control Station |
| | Purchase Line Boundary | | Permanent Lookout Station |
| | National Forest Land | | Historical Control Station and Permanent Lookout Station |
| | Appalachian Trail Corridor | | Labeled or Unlabeled Clearing |
| | State Park Land | | Mine, Quarry, or Gravel Pit |
| | Primary Highway | | Building, Church, School, Cemetery |
| | Secondary Highway | | Campground, National Forest |
| | Improved Light Duty | | Campground, other than National Forest |
| | Unimproved Dirt | | Picnic Area, National Forest |
| | Trail | | Picnic Area, other than National Forest |
| | U.S. Highway | | Trailhead |
| | State Highway | | Hiking Trail |
| | Forest Route | | Interpretive Trail |
| | Railroad | | Trailhead Parking |
| | Power Transmission Line | | Winter Trail Parking |
| | Trail Shelter | | Cross Country Ski Area |
| | District Ranger Office | | Downhill Ski Area |
| | Forest Supervisor Headquarters | | |



FOREST SERVICE MAP
Compiled at the Regional Office, Milwaukee, Wisconsin, 1974 from
U.S. Geological Survey quadrangle maps. Revisions by
Forest Service, Geomatics Service Center, Salt Lake City, Utah,
from 1991 correction guides.

Topographic maps are
available from
Branch of Distribution,
U.S. Geological Survey,
Box 25286,
Denver Federal Center,
Denver, CO 80226