

75°04'30"W

75°03'45"W

75°03'00"W

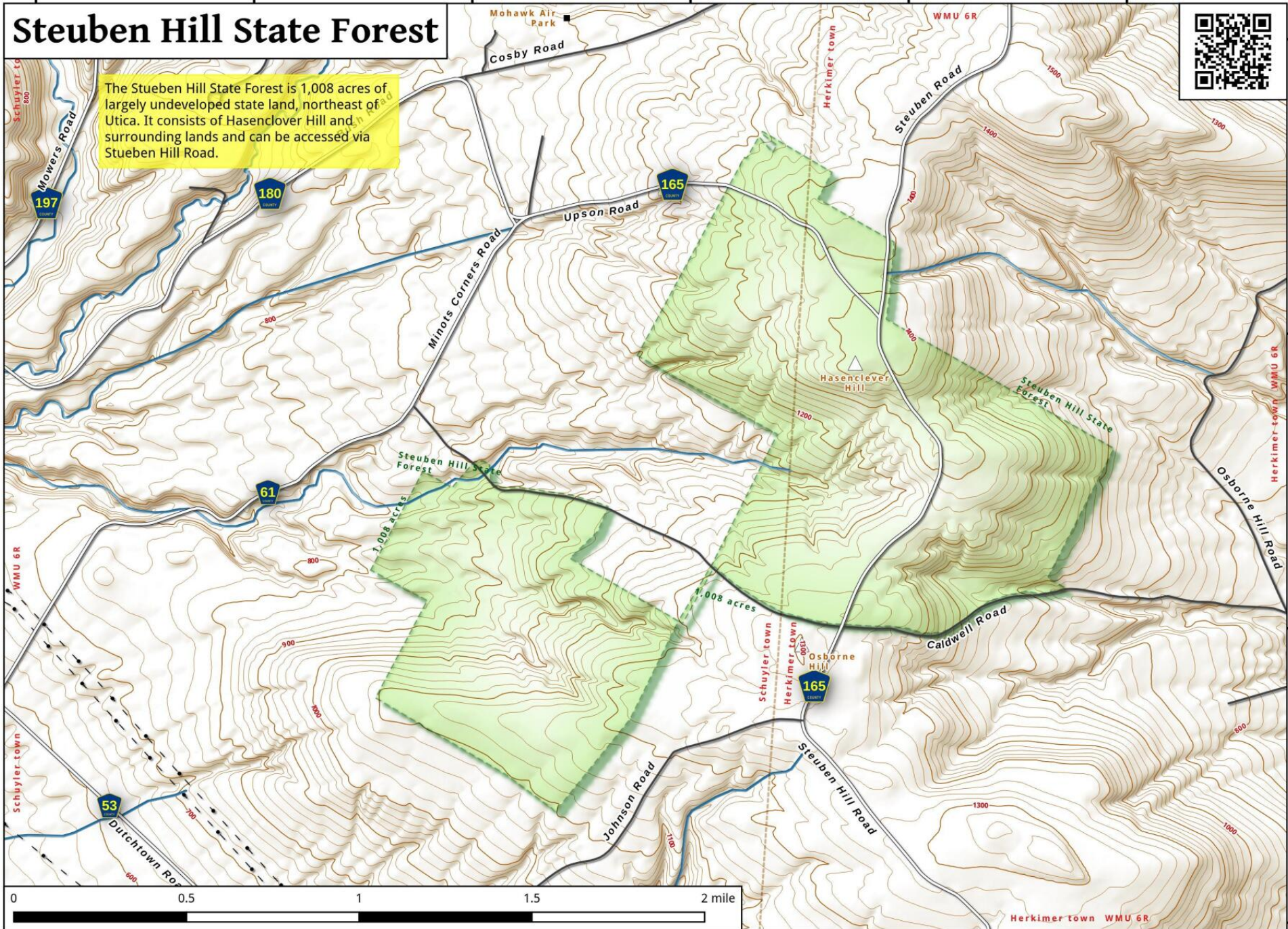
75°02'15"W

75°01'30"W

75°00'45"W

Steuben Hill State Forest

The Steuben Hill State Forest is 1,008 acres of largely undeveloped state land, northeast of Utica. It consists of Hasenclever Hill and surrounding lands and can be accessed via Steuben Hill Road.



43°06'45"N

43°06'00"N

43°05'15"N

43°04'30"N

Steuben Hill State Forest Map, May 24, 2016 by AndyArthur.org in QGIS 2.14.2-Essen and Python. Street Map is Copyright © OpenStreetMap contributors, CC BY-SA. NYSDEC Data: DEM, Borders, ADK Wetlands, Trails, Assets. True North. 1 inch = 0.4 miles. Projection: NAD83 / UTM zone 18N. Coordinates: 45" WGS 84. Contours are 20 feet.