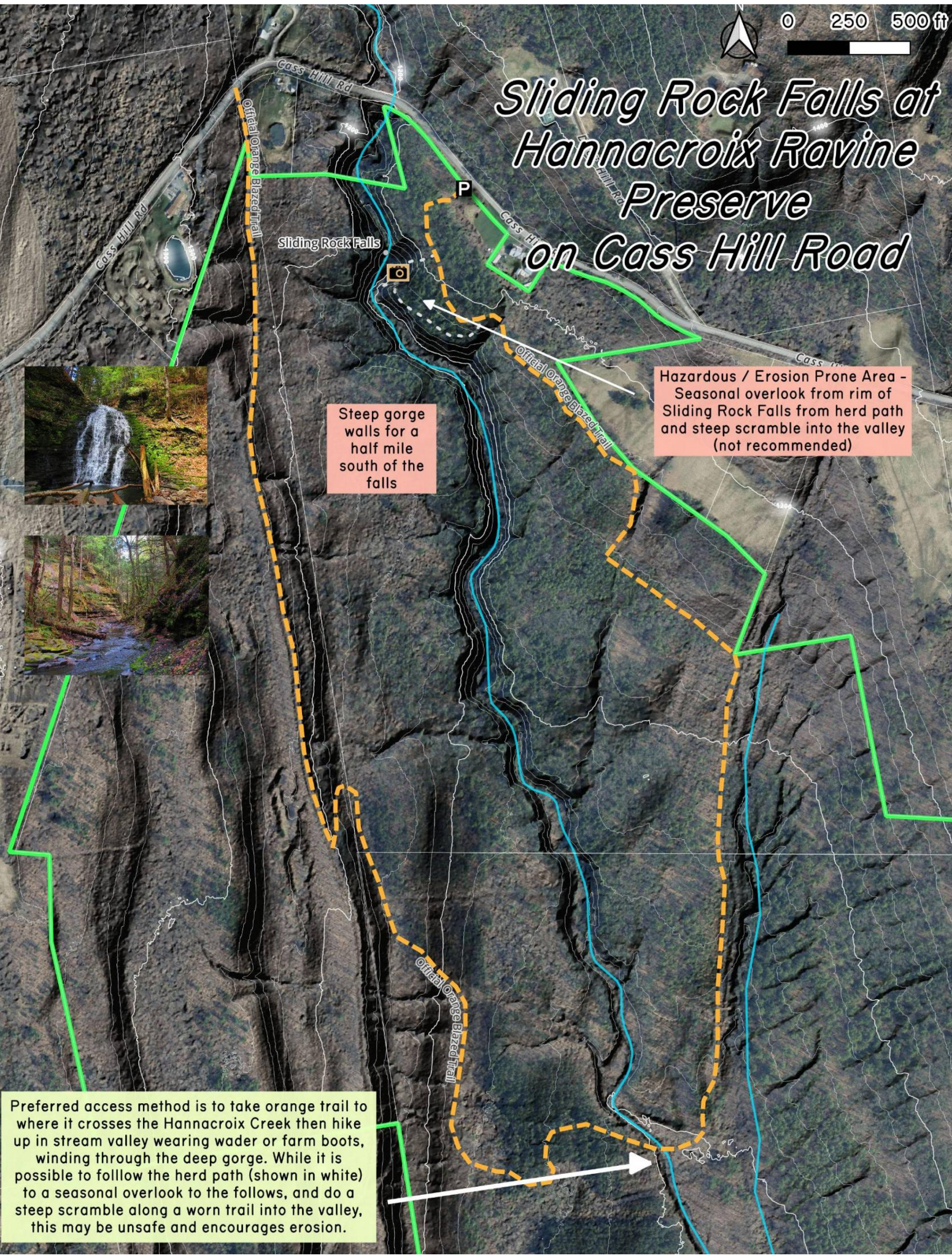


Sliding Rock Falls at Hannacroix Ravine Preserve on Cass Hill Road



Steep gorge walls for a half mile south of the falls

Hazardous / Erosion Prone Area - Seasonal overlook from rim of Sliding Rock Falls from herd path and steep scramble into the valley (not recommended)

Preferred access method is to take orange trail to where it crosses the Hannacroix Creek then hike up in stream valley wearing water or farm boots, winding through the deep gorge. While it is possible to follow the herd path (shown in white) to a seasonal overlook to the follows, and do a steep scramble along a worn trail into the valley, this may be unsafe and encourages erosion.