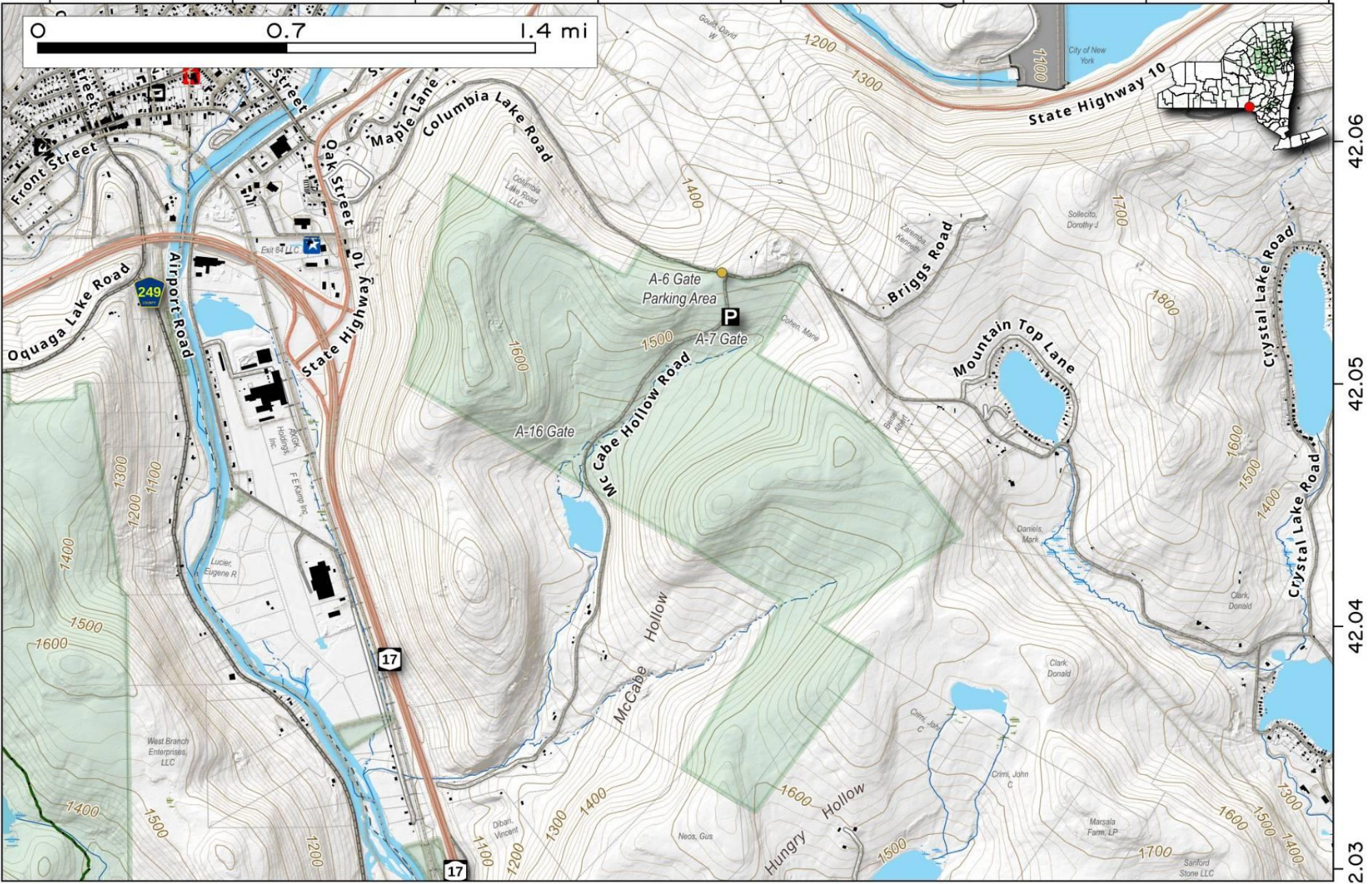
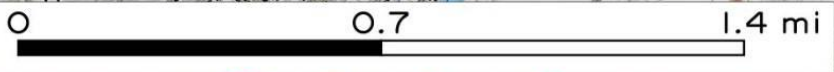


# Columbia Lake State Forest. 700-acre state forest southeast of Deposit along McCabe Hollow.

Map created by Andy Arthur on 3/14/2025 in QGIS 3.34.14-Prizren. Contains US Forest Service Base Map, NYS DEC data with additional campsites added by Andy. More maps at [andyarthur.org](http://andyarthur.org).



-75.43      -75.42      -75.41      -75.40      -75.39      -75.38      -75.37      -75.36



42.06  
42.05  
42.04  
42.03