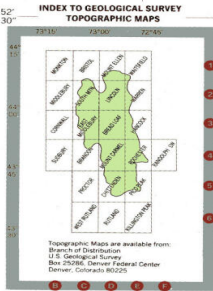
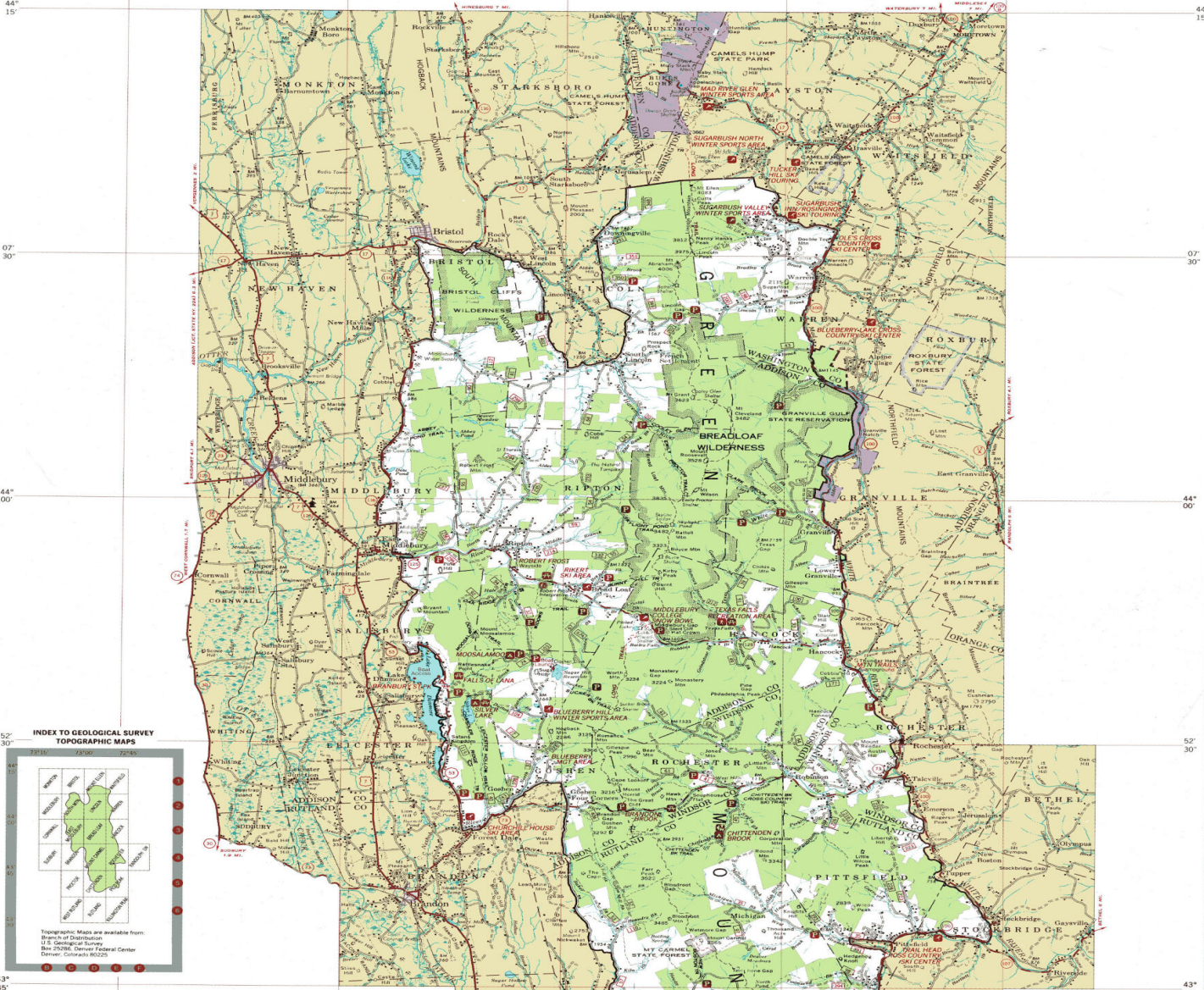


73°15' 07°30' 73°00' 52°30' 72°45'



U.S. DEPARTMENT OF AGRICULTURE  
FOREST SERVICE  
**GREEN MOUNTAIN NATIONAL FOREST  
(NORTH HALF)**  
VERMONT  
1992



LEGEND

- National Forest Boundary
- Purchase Unit Boundary
- National Forest Land
- Appalachian Trail Corridor Administered by the Green Mt. NF
- State Park Land
- Primary Highway
- Secondary Highway
- Improved Light Duty
- Unimproved Dirt
- Trail
- U.S. Highway
- State Highway
- Forest Route
- Railroad
- Power Transmission Line
- Trail Station
- District Ranger Office
- Forest Supervisor Headquarters
- △ Horizontal Control Station
- △ Permanent Lookout Station
- △ Horizontal Control Station and Permanent Lookout Station
- Located or Landmark Object
- ⊗ Mine, Quarry, or Gravel Pit
- ⊕ Building, Church, School, Cemetery
- ⊕ Campground, National Forest
- ⊕ Picnic Area, National Forest
- ⊕ Picnic Area, other than National Forest
- ⊕ Trailhead
- ⊕ Hiking Trail
- ⊕ Interpretive Trail
- ⊕ Trailhead Parking
- ⊕ Cross-Country Ski Area
- ⊕ Downhill Ski Area



FOREST SERVICE  
Compiled at the Regional Office, Milwaukee, Wisconsin, 1974 from  
U.S. Geological Survey quadrangles. Revised in 1992 by the USDA  
Forest Service, Geospatial Services Center, Salt Lake City, Utah,  
from 1991 correction guides.

07°30' 73°00' 52°30' 72°45'

Longitude west from Greenwich

1927 North American datum