

74°28'30"W

74°27'45"W

74°27'0"W

74°26'15"W

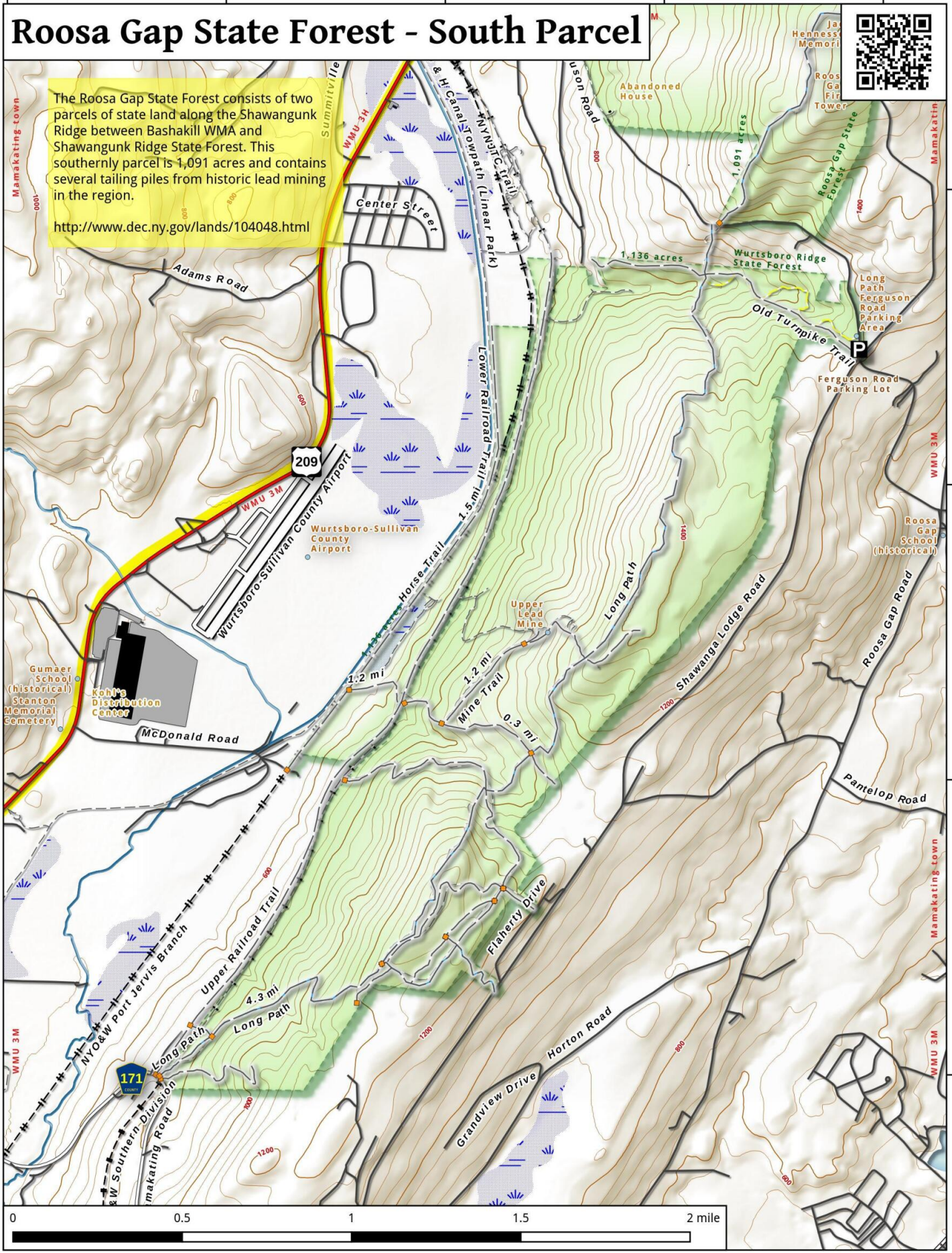
74°25'30"W

# Roosa Gap State Forest - South Parcel



The Roosa Gap State Forest consists of two parcels of state land along the Shawangunk Ridge between Bashakill WMA and Shawangunk Ridge State Forest. This southernly parcel is 1,091 acres and contains several tailing piles from historic lead mining in the region.

<http://www.dec.ny.gov/lands/104048.html>



Roosa Gap State Forest - South Parcel Map, March 28, 2016 by AndyArthur.org in QGIS 2.14.0-Essen and Python. Street Map is Copyright © OpenStreetMap contributors, CC BY-SA. NYSDEC Data: DEM, Borders, ADK Wetlands, Trails, Assets. True North. 1 inch = 0.4 miles. Projection: NAD83 / UTM zone 18N. Coordinates: 45" WGS 84. Contours are 40 feet.