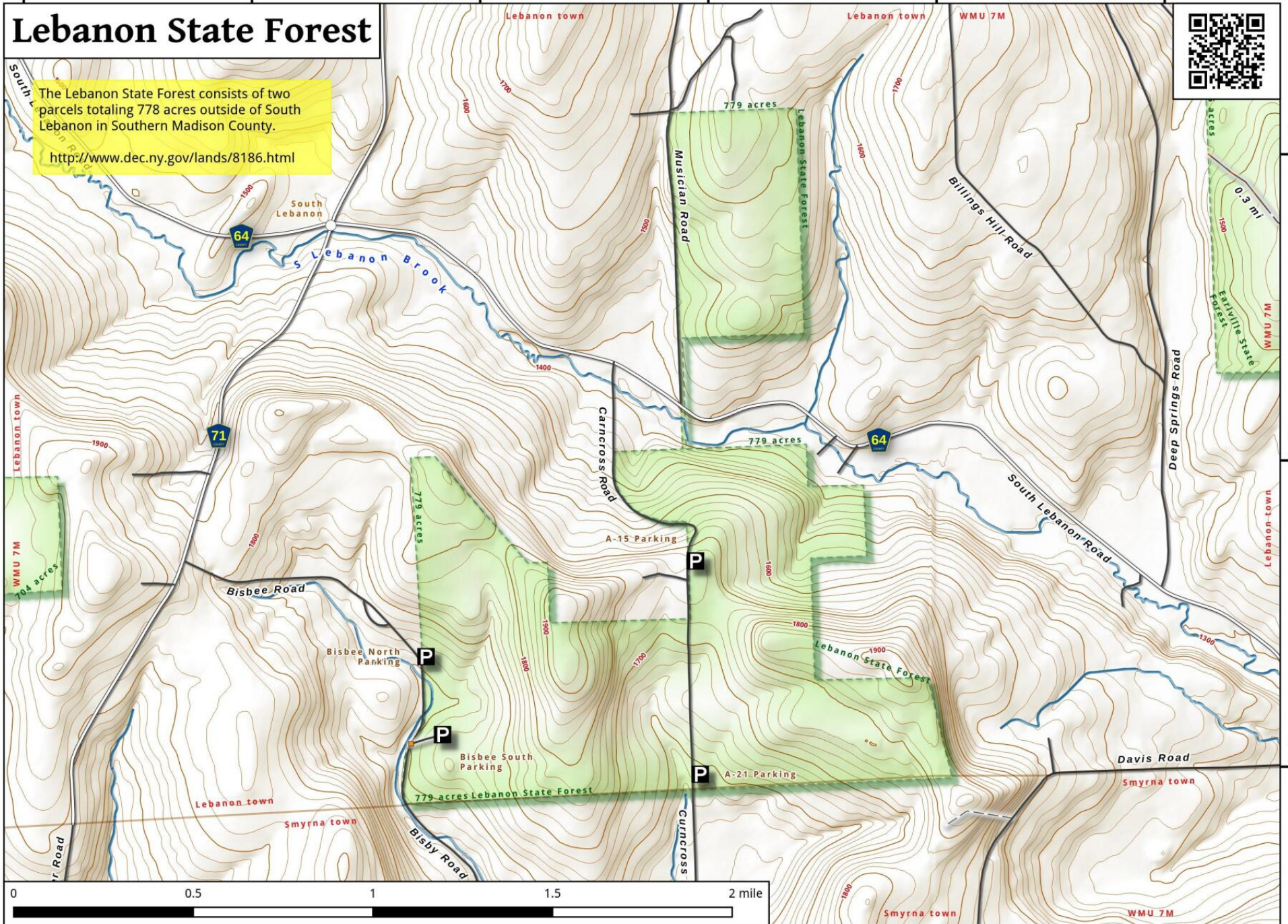


75°40'30"W 75°39'45"W 75°39'00"W 75°38'15"W 75°37'30"W 75°36'45"W

# Lebanon State Forest

The Lebanon State Forest consists of two parcels totaling 778 acres outside of South Lebanon in Southern Madison County.

<http://www.dec.ny.gov/lands/8186.html>



42°45'45"N  
42°45'00"N  
42°44'15"N

Lebanon State Forest Map, May 15, 2016 by AndyArthur.org in QGIS 2.14.2-Essen and Python. Street Map is Copyright © OpenStreetMap contributors, CC BY-SA. NYSDEC Data: DEM, Borders, ADK Wetlands, Trails, Assets. True North. 1 inch = 0.3 miles. Projection: NAD83 / UTM zone 18N. Coordinates: 45" WGS 84. Contours are 20 feet.