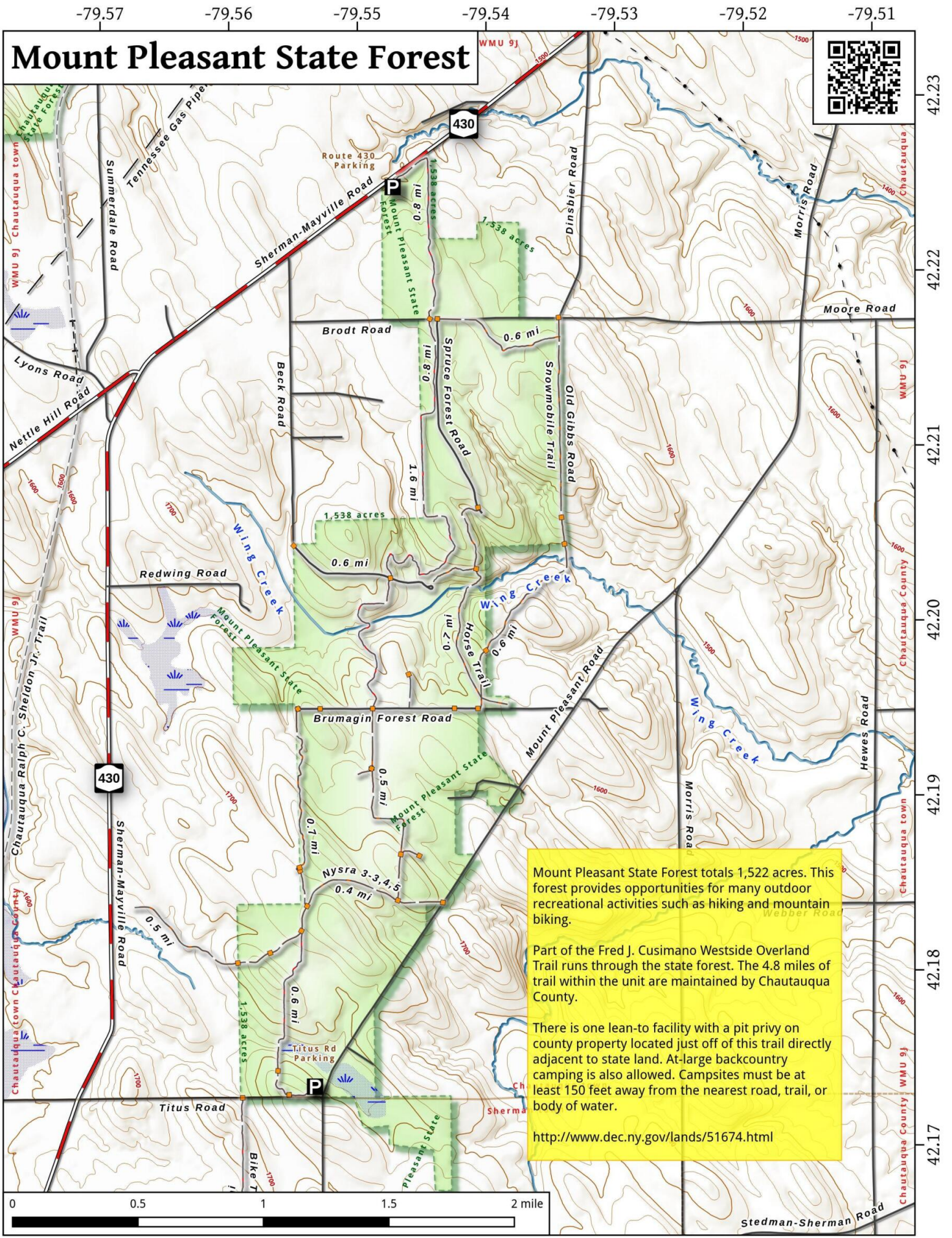


# Mount Pleasant State Forest



Mount Pleasant State Forest totals 1,522 acres. This forest provides opportunities for many outdoor recreational activities such as hiking and mountain biking.

Part of the Fred J. Cusimano Westside Overland Trail runs through the state forest. The 4.8 miles of trail within the unit are maintained by Chautauque County.

There is one lean-to facility with a pit privy on county property located just off of this trail directly adjacent to state land. At-large backcountry camping is also allowed. Campsites must be at least 150 feet away from the nearest road, trail, or body of water.

<http://www.dec.ny.gov/lands/51674.html>

Mount Pleasant State Forest Map, October 16, 2016 by AndyArthur.org in QGIS 2.16.1-Nødebo and Python. Street Map is Copyright © OpenStreetMap contributors, CC BY-SA. NYSDEC Data: DEM, Borders, ADK Wetlands, Trails, Assets. True North. 1 inch = 0.5 miles. Projection: NAD83 / UTM zone 17N. Coordinates: 0.01° latitude-longitude (WGS84). Contours are 20 feet.