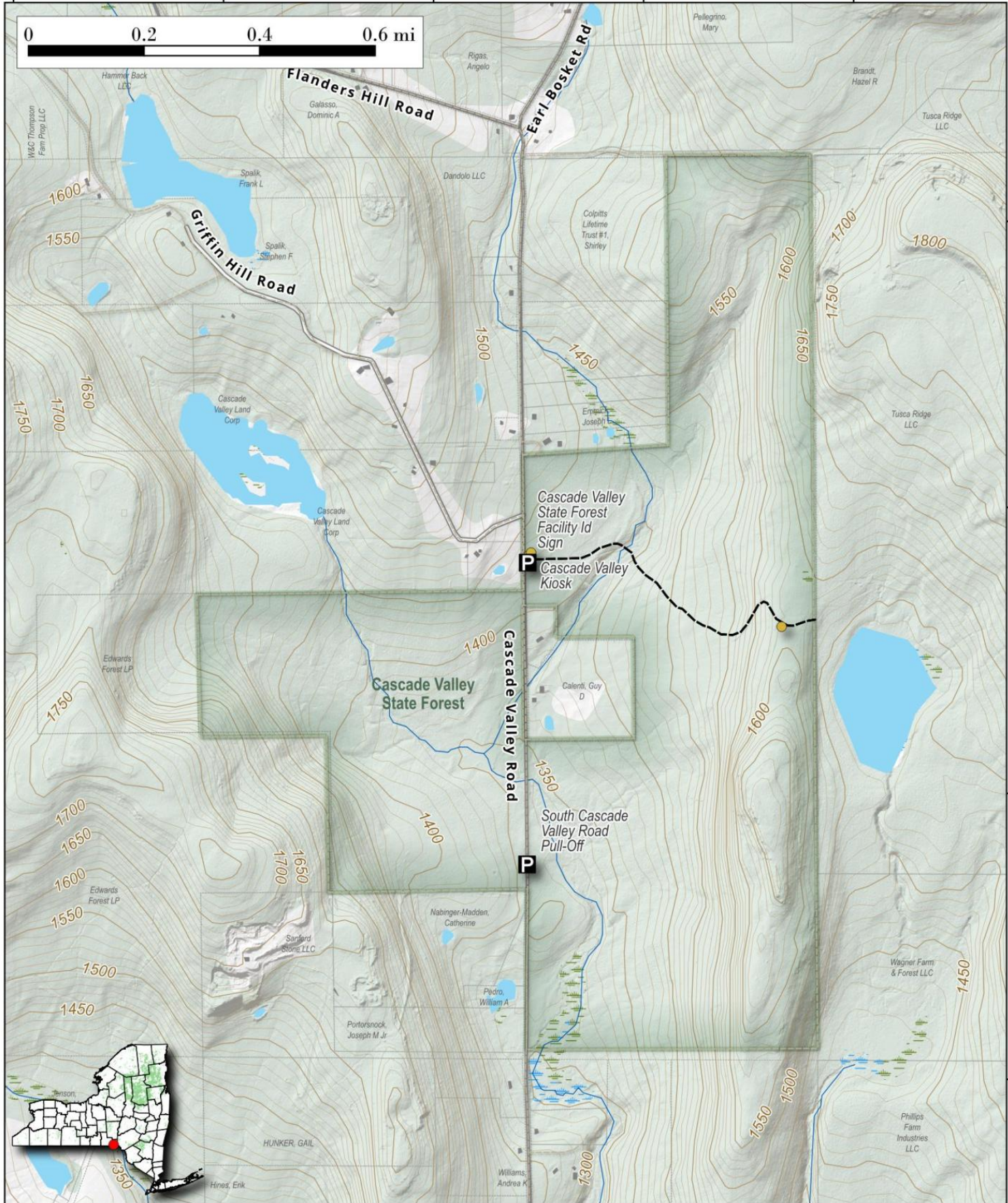
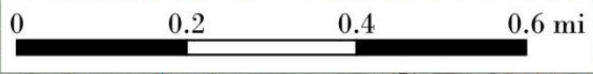


Cascade Valley State Forest. 533 arce state land along the Cascade Valley south of Exit 81 / Earl Bocket Road on NY 17, a few miles west of Damacus.

Map created by Andy Arthur on 11/18/2024 in QGIS 3.34.12-Prizren. Contains US Forest Service Base Map with additional campsites added by Andy. More maps at andyarthur.org.



-75.59 -75.58 -75.58 -75.57 -75.56



42.04
42.04
42.03
42.02

