

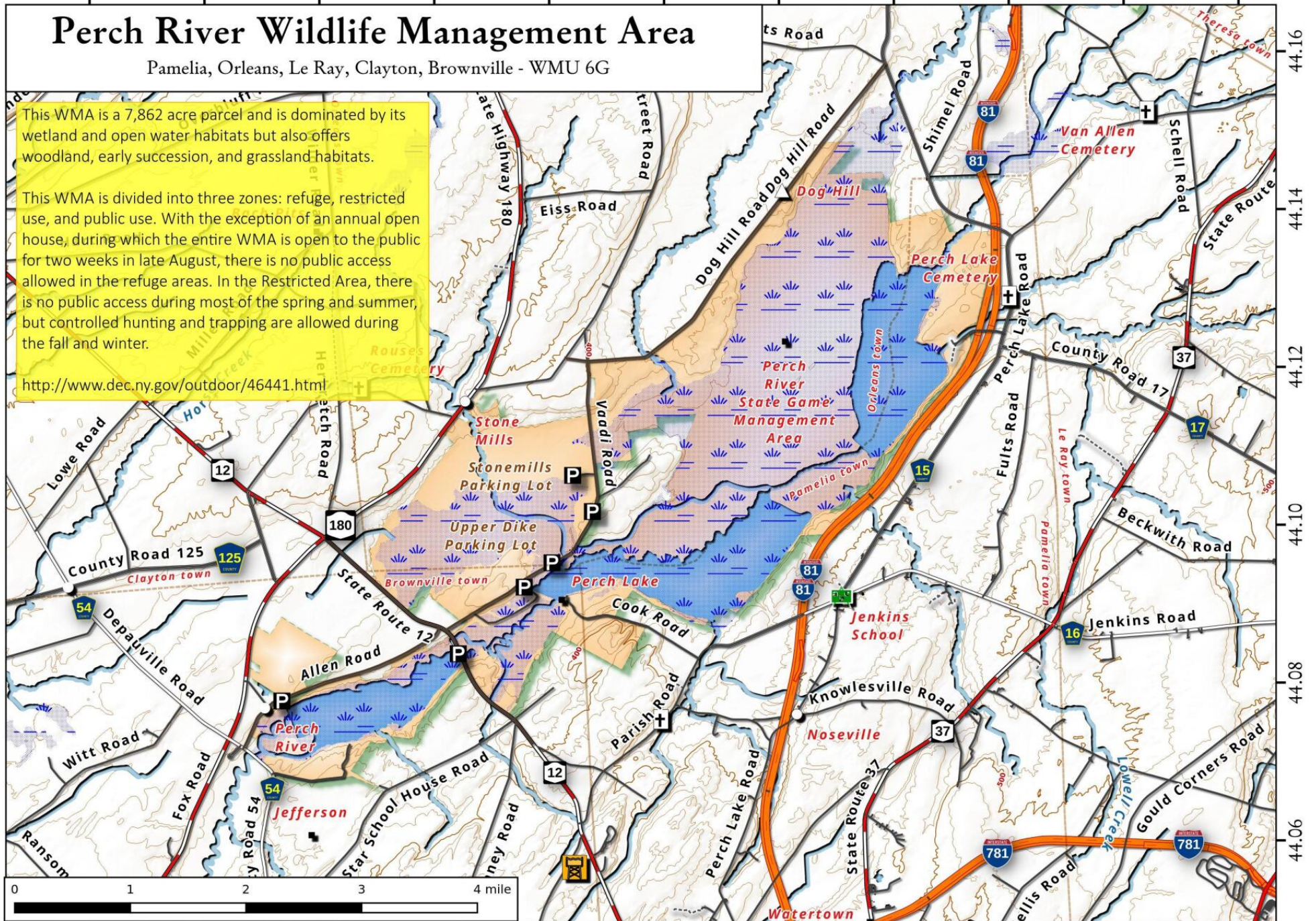
# Perch River Wildlife Management Area

Pamelia, Orleans, Le Ray, Clayton, Brownville - WMU 6G

This WMA is a 7,862 acre parcel and is dominated by its wetland and open water habitats but also offers woodland, early succession, and grassland habitats.

This WMA is divided into three zones: refuge, restricted use, and public use. With the exception of an annual open house, during which the entire WMA is open to the public for two weeks in late August, there is no public access allowed in the refuge areas. In the Restricted Area, there is no public access during most of the spring and summer, but controlled hunting and trapping are allowed during the fall and winter.

<http://www.dec.ny.gov/outdoor/46441.html>



Perch River Wildlife Management Area Map, February 28, 2017 by AndyArthur.org in QGIS 2.18.3 and Python. Street Map is Copyright © OpenStreetMap contributors, CC BY-SA. NYSDEC Data: DEM, Borders, ADK Wetlands, Trails, Assets. True North. 1 inch = 1.1 miles. Projection: NAD83 / UTM zone 18N. Coordinates: 0.02° latitude-longitude (WGS84). Contours are 20 feet.