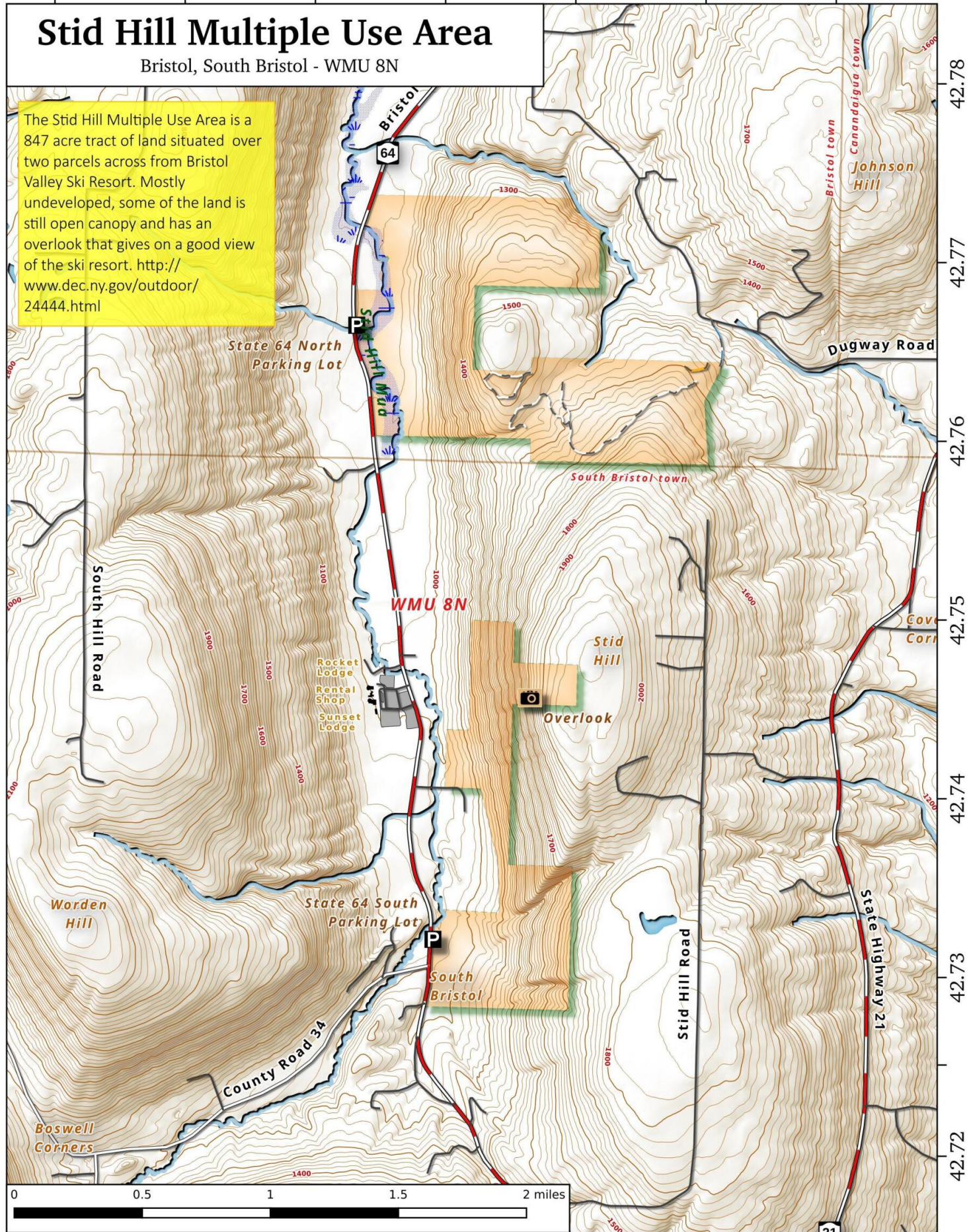


-77.43      -77.42      -77.41      -77.40      -77.39      -77.38      -77.37

# Stid Hill Multiple Use Area

Bristol, South Bristol - WMU 8N

The Stid Hill Multiple Use Area is a 847 acre tract of land situated over two parcels across from Bristol Valley Ski Resort. Mostly undeveloped, some of the land is still open canopy and has an overlook that gives on a good view of the ski resort. <http://www.dec.ny.gov/outdoor/24444.html>



Stid Hill Multiple Use Area Map, May 19, 2018 by AndyArthur.org in QGIS 3.0.2-Girona and Python. Street Map is Copyright © OpenStreetMap contributors, CC BY-SA. NYSDEC Data: LiDAR/DEM, Borders, ADK Wetlands, Trails, Assets. True North. 1 inch = 0.3 miles. Projection: NAD83 / UTM zone 18N. Coordinates: 0.01° latitude-longitude (WGS84). Contours are 20 feet.