

# Southville State Forest

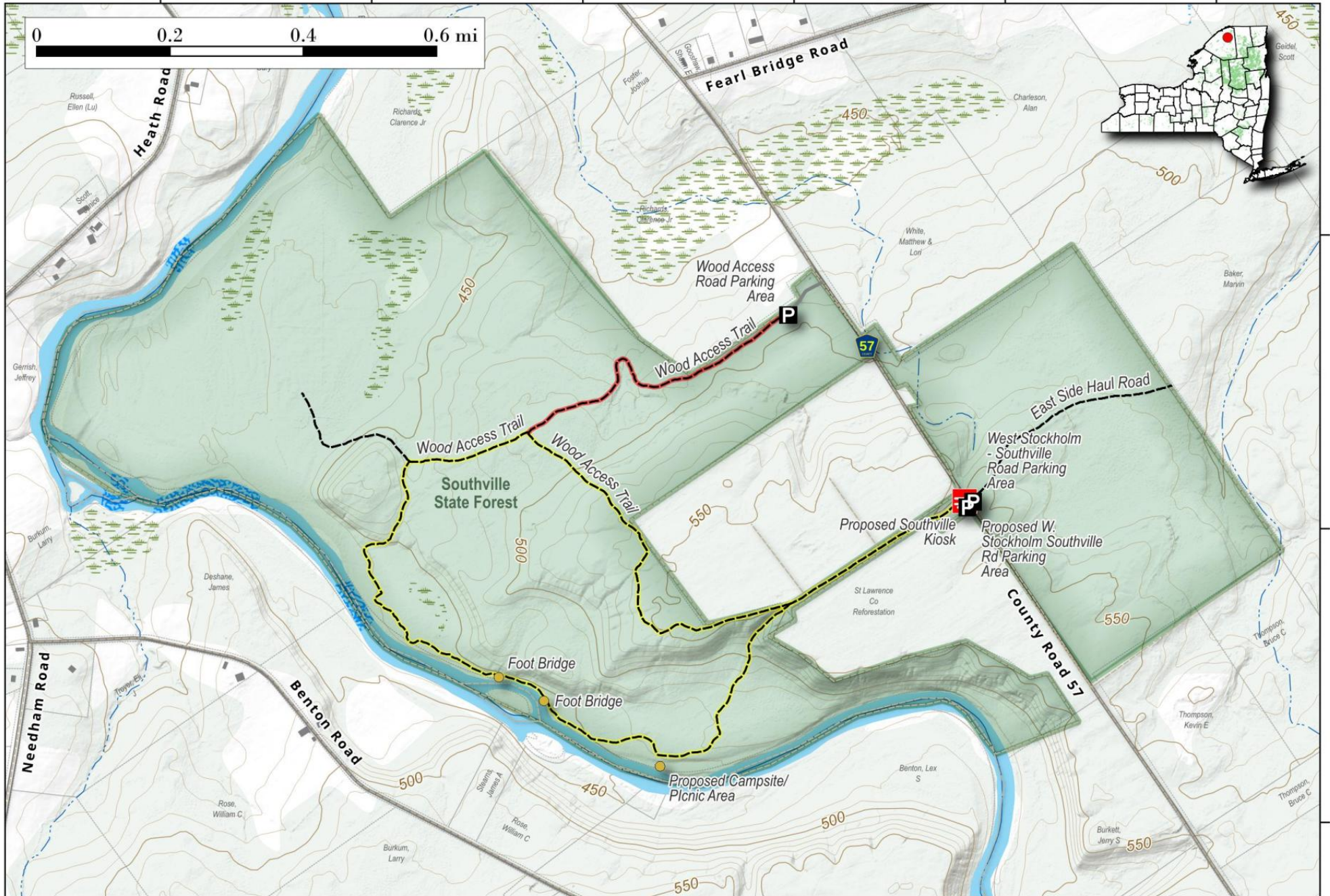
551 acres along the St. Regis River gorge in Stockholm St. Lawrence County. There is a steep cliff that drops off into the river gorge. No designated campsites however informal camping is popular inside the gorge.

Map created by Andy Arthur on 11/4/2024 in QGIS 3.34.11-Prizren. Contains US Forest Service Base Map with additional campsites added by Andy. More maps at [andyarthur.org](http://andyarthur.org).



-74.90      -74.89      -74.89      -74.88      -74.87      -74.87

0      0.2      0.4      0.6 mi



44.70

44.69

44.68