

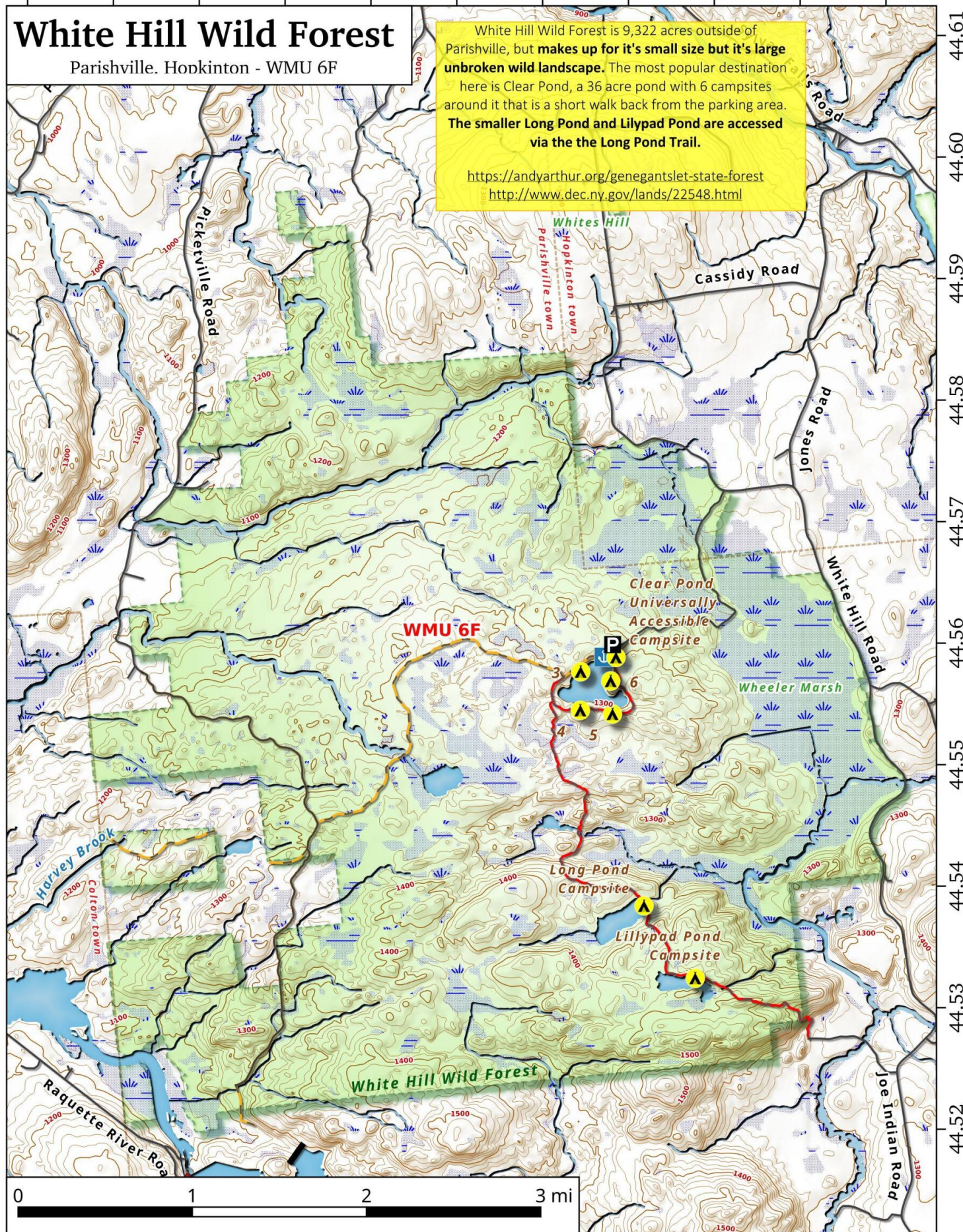
74.84 -74.83 -74.82 -74.81 -74.80 -74.79 -74.78 -74.77 -74.76 -74.75 -74.74

White Hill Wild Forest

Parishville. Hopkinton - WMU 6F

White Hill Wild Forest is 9,322 acres outside of Parishville, but **makes up for it's small size but it's large unbroken wild landscape.** The most popular destination here is Clear Pond, a 36 acre pond with 6 campsites around it that is a short walk back from the parking area. **The smaller Long Pond and Lillypad Pond are accessed via the the Long Pond Trail.**

<https://andyarthur.org/genegantslet-state-forest>
<http://www.dec.ny.gov/lands/22548.html>



White Hill Wild Forest Map, March 10, 2019 by AndyArthur.org in QGIS 3.6.0-Noosa and Python. Street Map is Copyright © OpenStreetMap contributors, CC BY-SA. NYSDEC Data: LiDAR/DEM, Borders, ADK Wetlands, Trails, Assets. True North. 1 inch = 0.7 miles. Projection: NAD83 / UTM zone 18N. Coordinates: 0.01° latitude-longitude (WGS84). Contours are 20 feet.