

-74.46

-74.45

-74.44

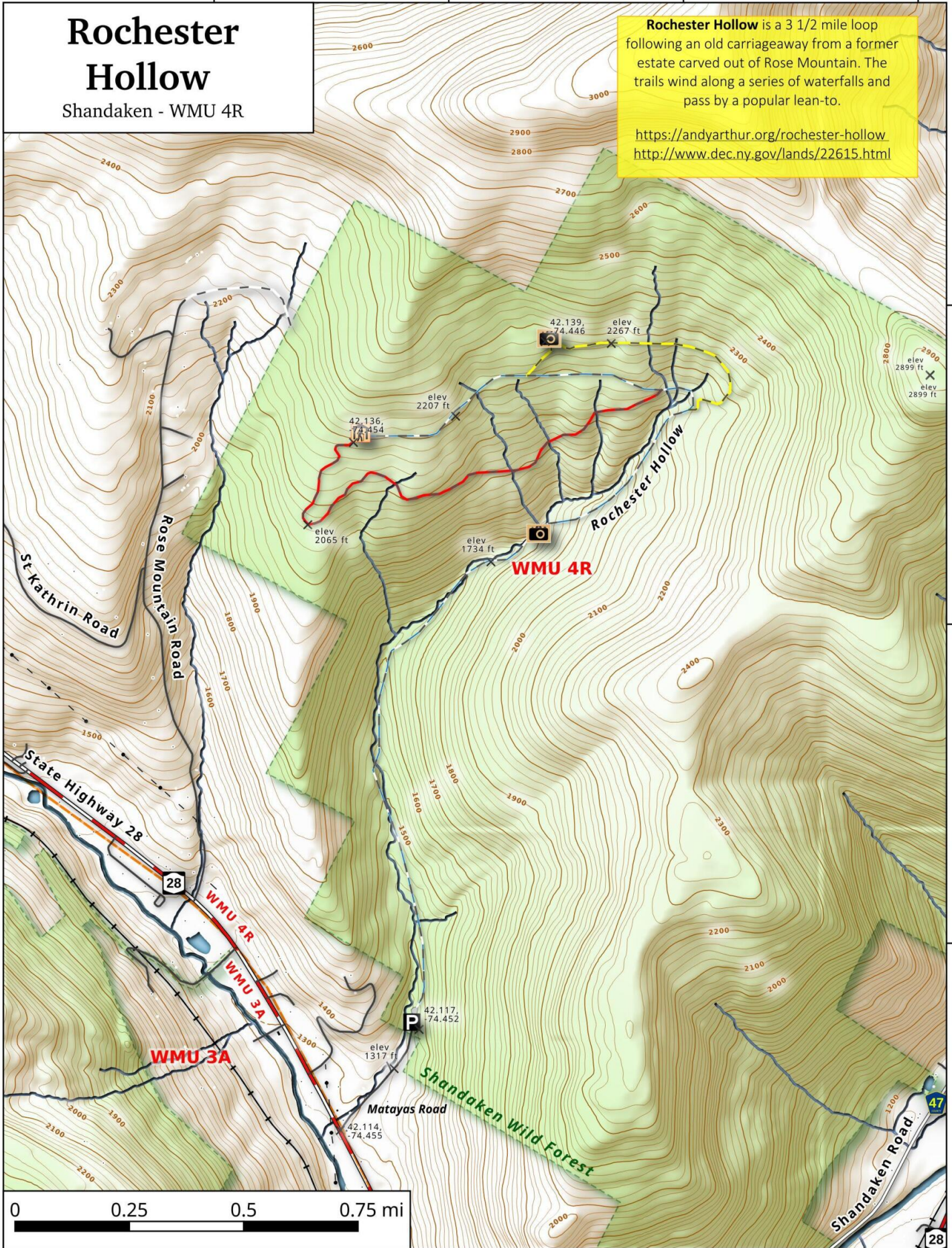
-74.43

Rochester Hollow

Shandaken - WMU 4R

Rochester Hollow is a 3 1/2 mile loop following an old carriageaway from a former estate carved out of Rose Mountain. The trails wind along a series of waterfalls and pass by a popular lean-to.

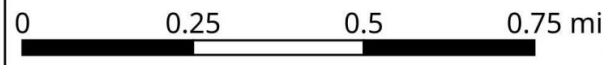
<https://andyarthur.org/rochester-hollow>
<http://www.dec.ny.gov/lands/22615.html>



42.14

42.13

42.12



Rochester Hollow Map, November 12, 2019 by AndyArthur.org in QGIS 3.8.1-Zanzibar and Python. Street Map is Copyright © OpenStreetMap contributors, CC BY-SA. NYSDEC Data: LiDAR/DEM, Borders, ADK Wetlands, Trails, Assets. True North. 1 inch = 0.3 miles. Projection: NAD83 / UTM zone 18N. Coordinates: 0.01° latitude-longitude (WGS84). Contours are 20 feet. Map is centered