

New Forge State Forest.

672 acres along the Taghkanic Creek known for paddling and swimming hole.

Map created by Andy Arthur on 11/20/2024 in QGIS 3.34.12-Prizren. Contains US Forest Service Base Map, NYS DEC Ddata with additional campsites added by Andy. More maps at andyarthur.org.



-73.69

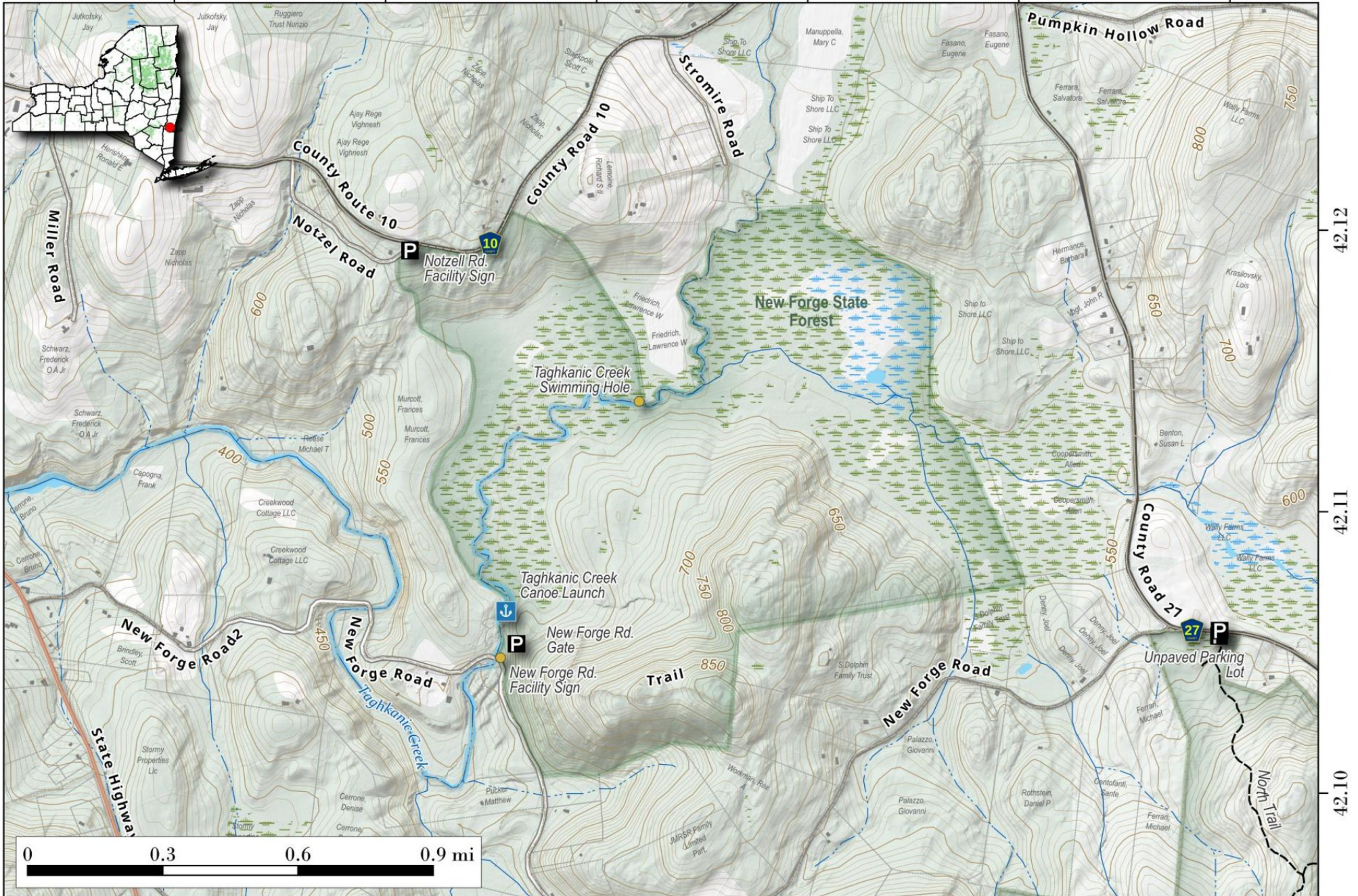
-73.68

-73.67

-73.66

-73.65

-73.64



42.12

42.11

42.10