

Branch Pond Campsites.

Informal roadside campsites near Kelley Stand and Branch Pond, along with sites along the lake that are a short walk-in.

Map created by Andy Arthur on 10/23/2024 in QGIS 3.34.11-Prizren. Contains US Forest Service Base Map with campsites added by Andy. More maps at andyarthur.org.



-73.05

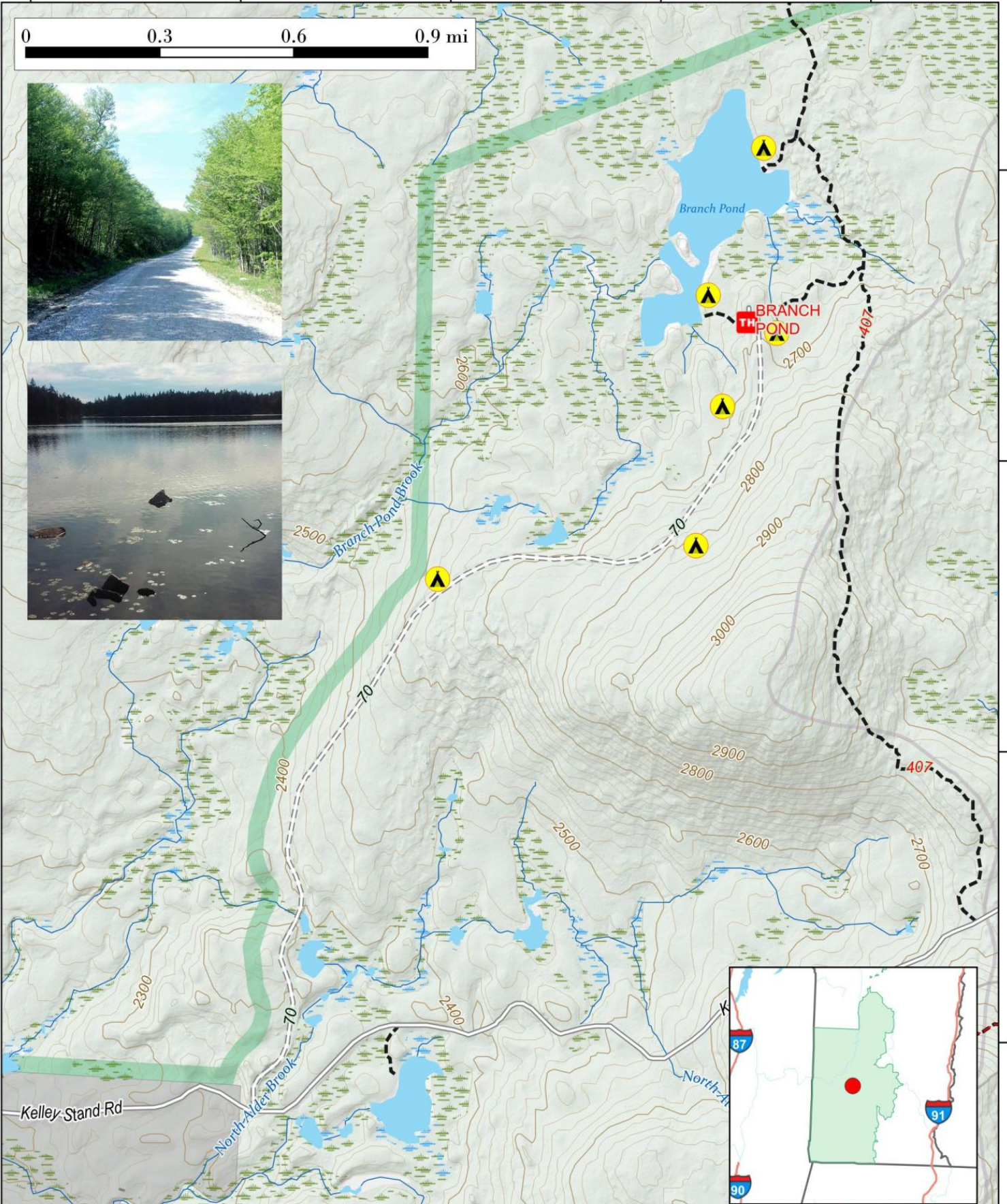
-73.04

-73.03

-73.02

-73.01

0 0.3 0.6 0.9 mi



43.08

43.07

43.06

43.05