

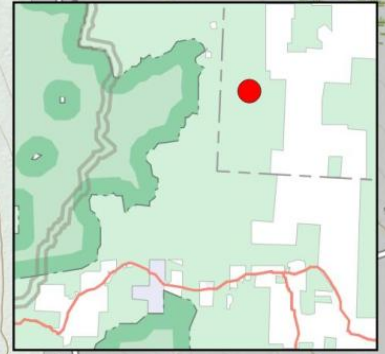
Somerset Airfield Campground.

Free, developed camping area with pit privies off of the Deerfield River. No camping for the next 3/4 mile north of Stratton Airfield, however beyond there near Shep Meadow additional dispersed camping opportunities exist (seasonal use only - gated in winter).

Map created by Andy Arthur on 10/29/2024 in QGIS 3.34.11-Prizren. Contains US Forest Service Base Map with additional campsites added by Andy. More maps at andyarthur.org.

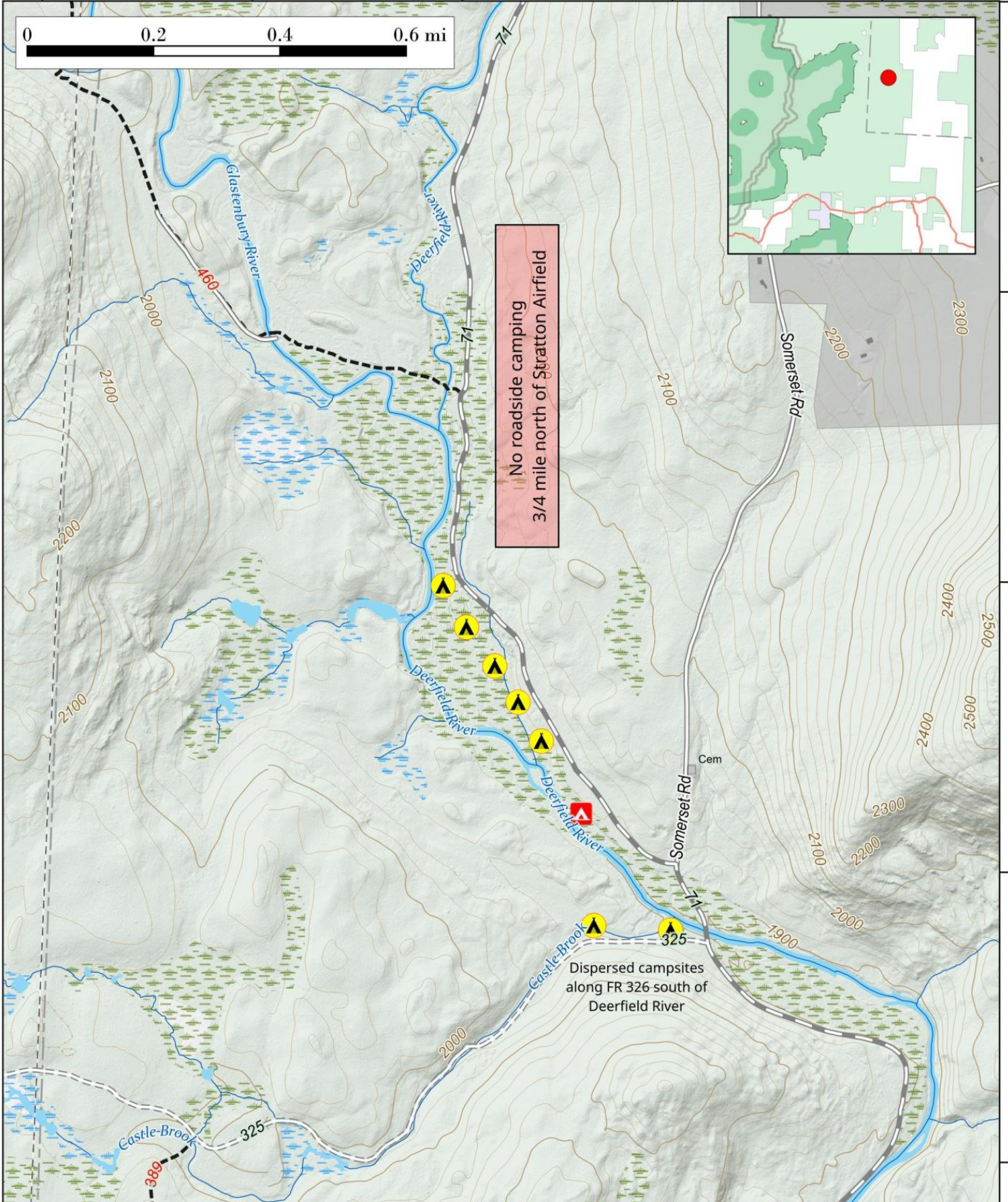


-73.01 -73.00 -72.99 -72.98 -72.97



No roadside camping
3/4 mile north of Stratton Airfield

Dispersed campsites
along FR 326 south of
Deerfield River



42.97
42.96
42.96
42.95
42.95