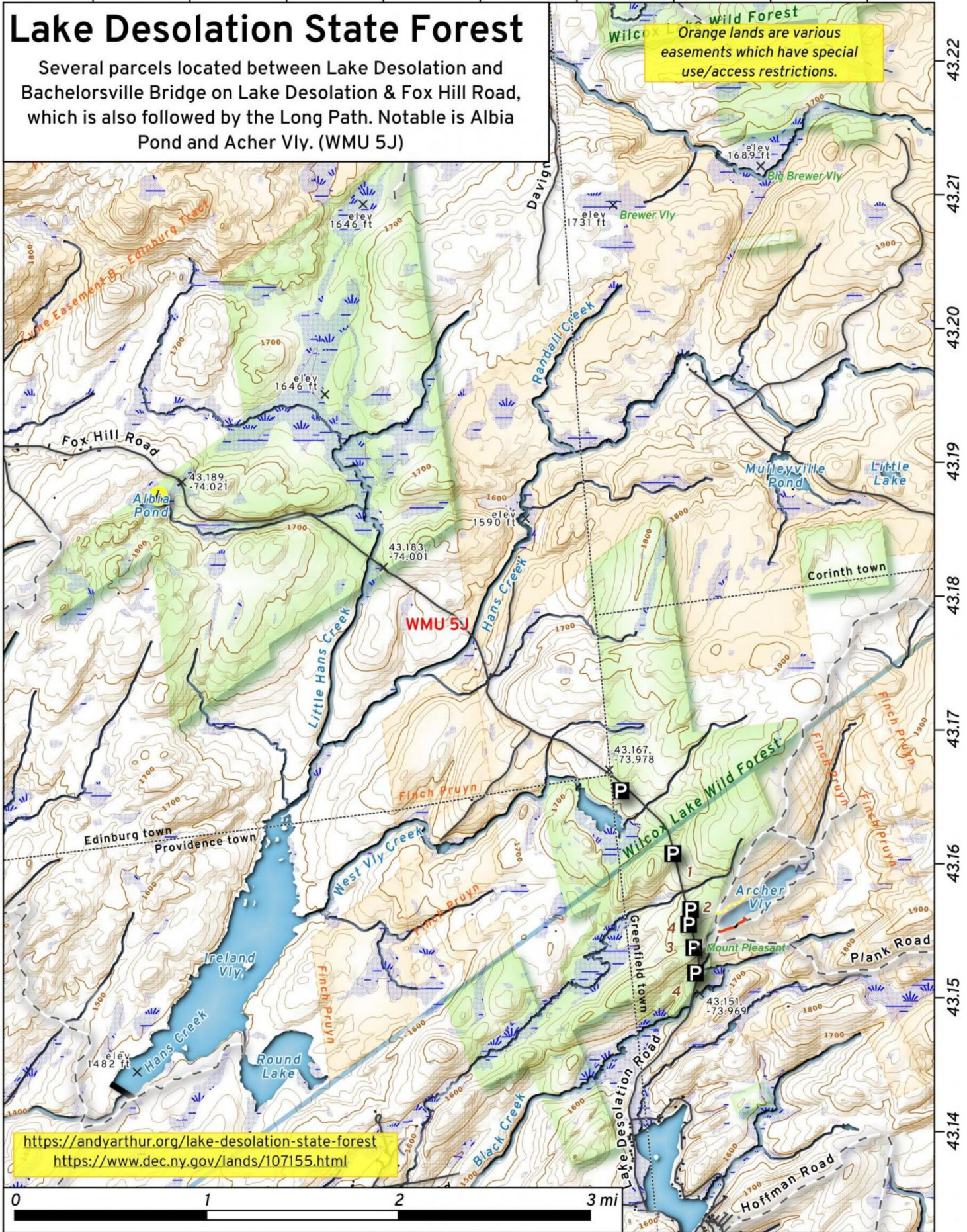


-74.03 -74.02 -74.01 -74.00 -73.99 -73.98 -73.97 -73.96 -73.95

# Lake Desolation State Forest

Several parcels located between Lake Desolation and Bachelorsville Bridge on Lake Desolation & Fox Hill Road, which is also followed by the Long Path. Notable is Albia Pond and Acher Vly. (WMU 5J)

Orange lands are various easements which have special use/access restrictions.



<https://andyarthur.org/lake-desolation-state-forest>  
<https://www.dec.ny.gov/lands/107155.html>

Lake Desolation State Forest Map, February 7, 2021 by AndyArthur.org in QGIS 3.16.3-Hannover and Python. Street Map is Copyright © OpenStreetMap contributors, CC BY-SA. NYSDEC Data: LiDAR/DEM, Borders, ADK Wetlands, Trails, Assets. True North. 1 inch = 0.6 miles. Projection: NAD83 / UTM zone 18N. Coordinates: 0.01° latitude-longitude (WGS84). Contours are 20 feet. Map is centered on 43.1749,-74.004.