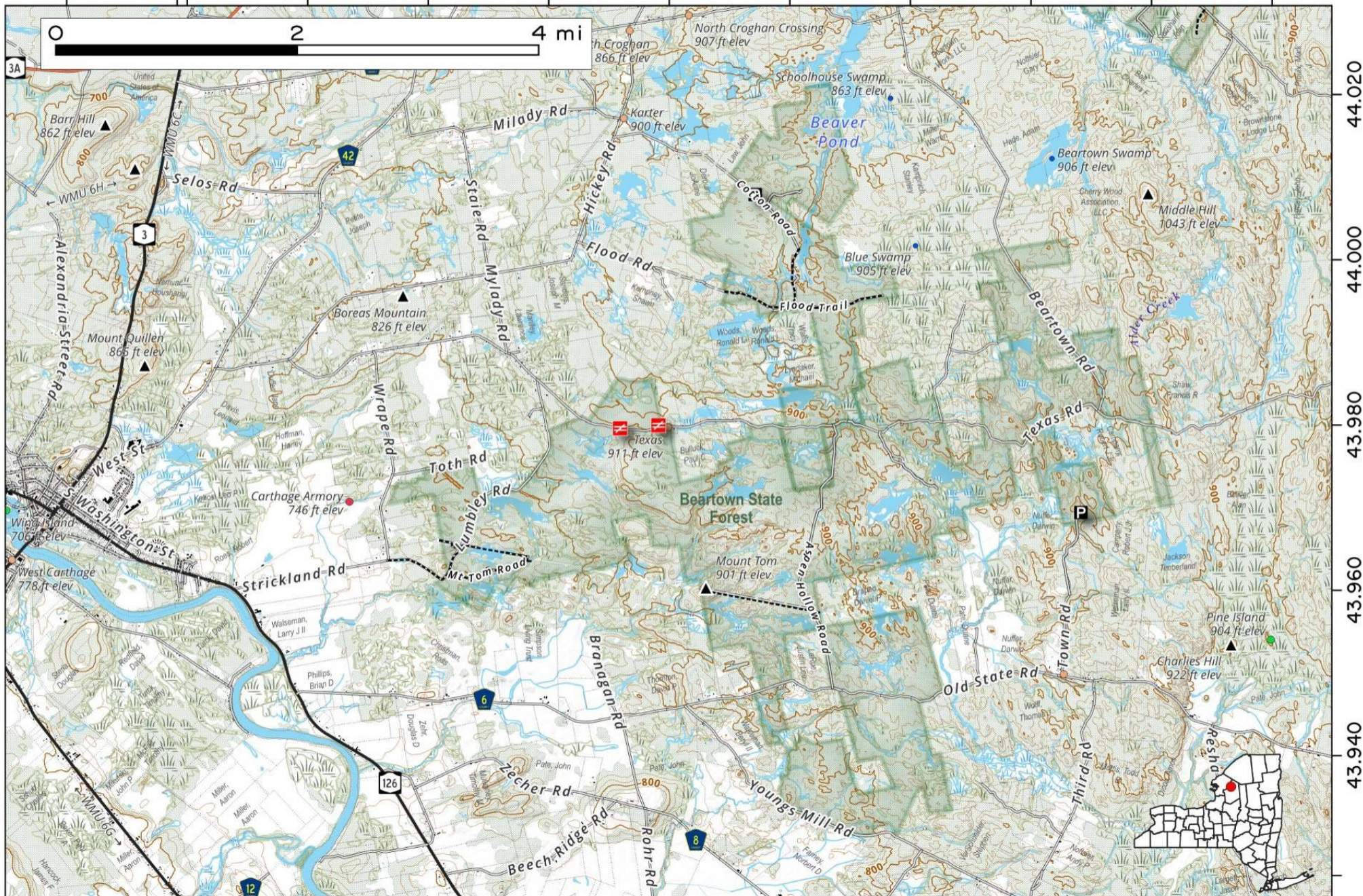


Beartown State Forest is 7,205 acres, named after a former pioneer settlement. The area features granite bedrock, shallow soils, and rocky outcrops, with beaver wetlands in low-lying areas, creating a unique landscape of contrasts and diverse ecosystems.

Map created by Andy Arthur on 10/3/2025 in QGIS 3.44.3-Solothurn. Contains NYS GIS and DEC data with additional campsites added by Andy. More maps at [andyarthur.org](http://andyarthur.org).



-75.600   -75.580   -75.560   -75.540   -75.520   -75.500   -75.480   -75.460   -75.440   -75.420   -75.400



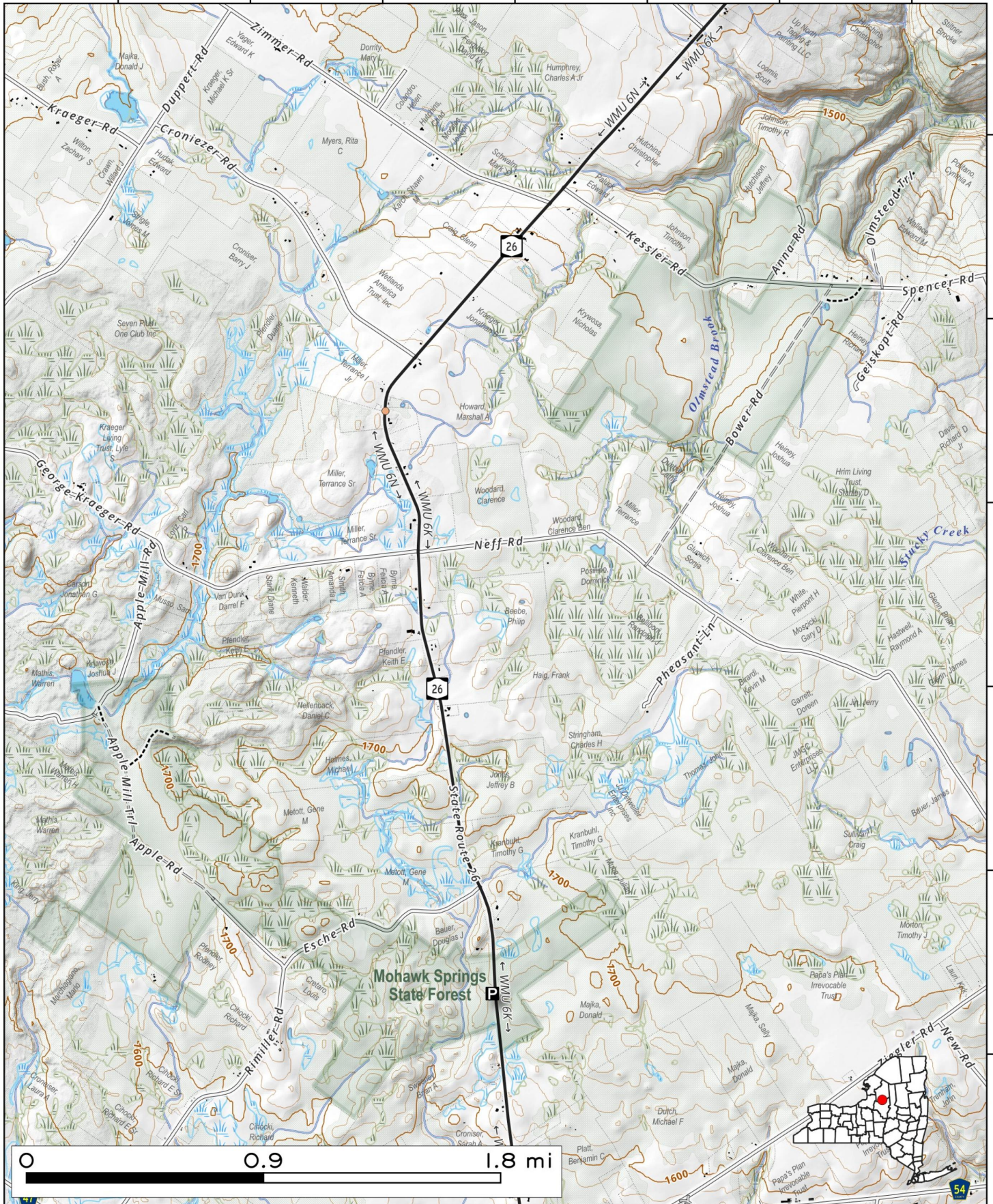
44.020  
44.000  
43.980  
43.960  
43.940

Mohawk Springs State Forest consists of two parcels off NY 26 on Mohawk Hill northwest of Boonville that total 1,210 acres. It is named for Cold Spring that can be found up here.

Map created by Andy Arthur on 12/18/2025 in QGIS 3.44.5-Solothurn. Contains NYS GIS and DEC data with additional campsites added by Andy. More maps at [andyarthur.org](http://andyarthur.org).



-75.49      -75.48      -75.47      -75.46      -75.45      -75.44      -75.43



43.54  
43.53  
43.52  
43.51  
43.50  
43.49

0      0.9      1.8 mi

54