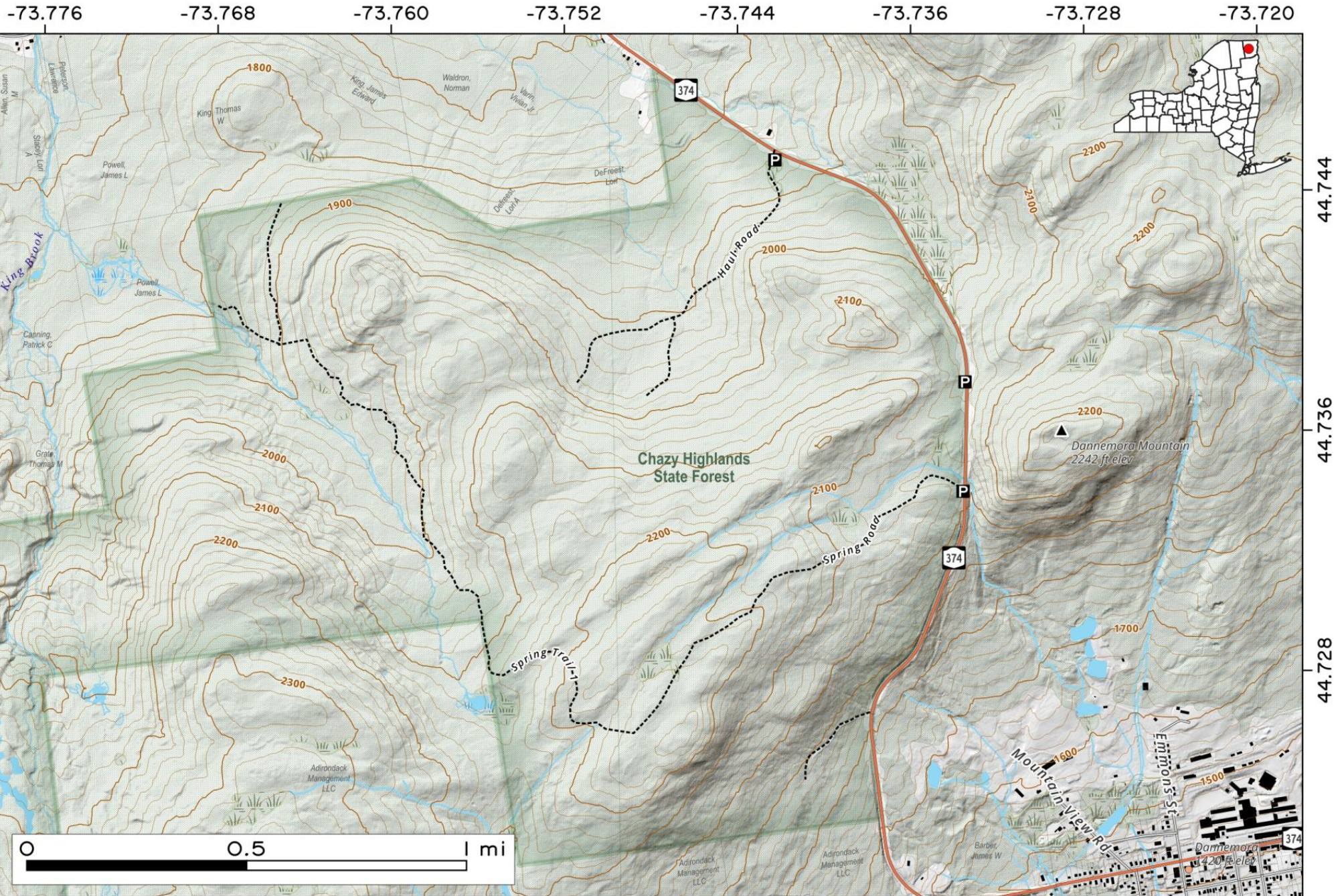


Dannemora Mountain Haul Roads. Just north of Dannemora, as you climb Dannemora Mountain on NY 374, there is a pull off with a water fountain that is popular for tourists and locals seeking a source of good spring water. From there are several old haul road trails that you can hike along on Dannemora Mountain, a previously logged area that once supplied the wood used in the wood furnaces that heated Clinton Correctional Facility in Dannemora.



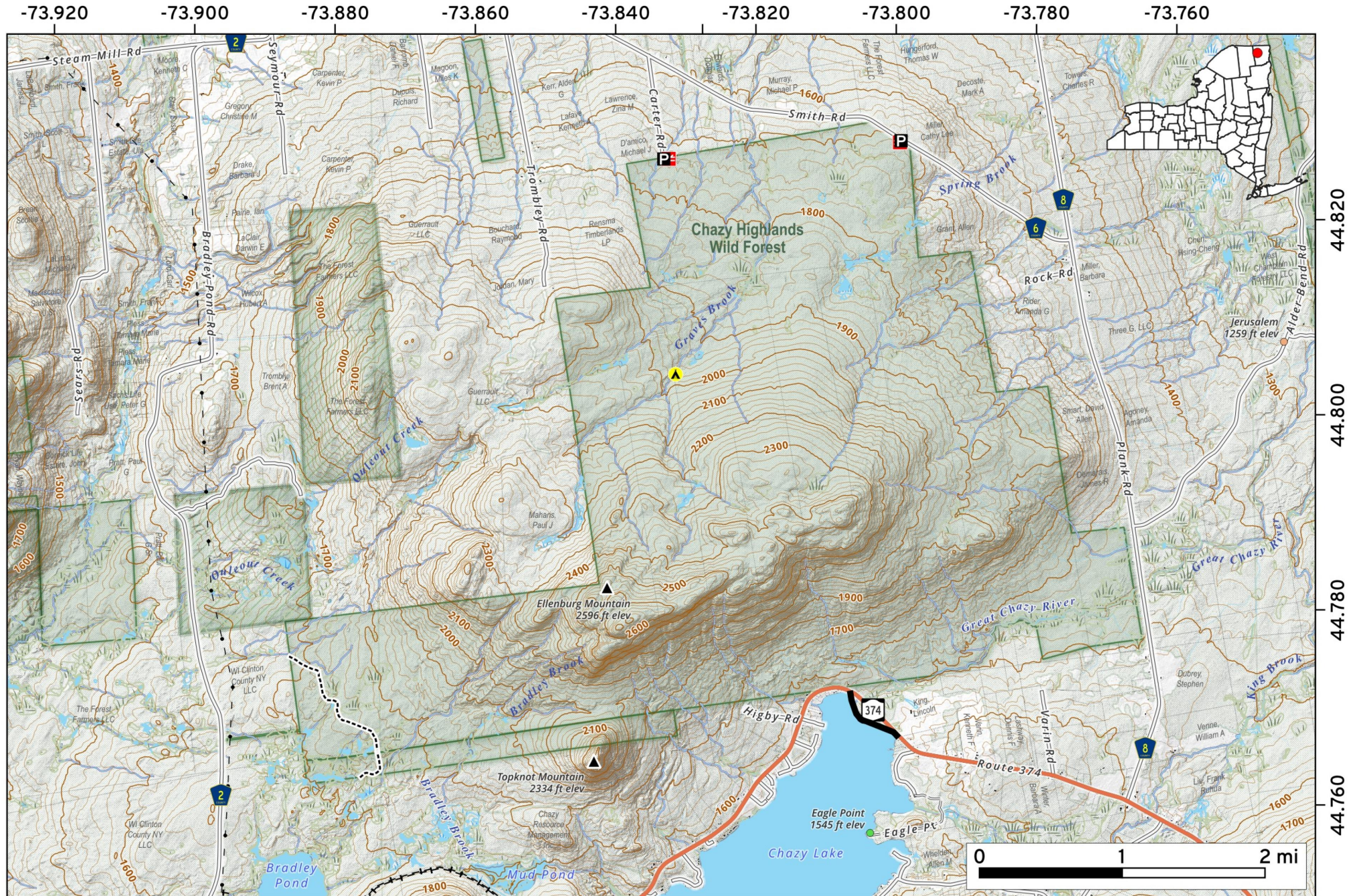
Map created by Andy Arthur on 10/9/2025 in QGIS 3.44.3-Solothurn. Contains NYS GIS and DEC data with additional campsites added by Andy. More maps at andyarthur.org.



Located in Clinton County's Chazy Highlands Wild Forest, **Ellenburg Mountain** reaches an elevation of 2,710 feet. Unlike nearby peaks, it lacks formal hiking trails but is accessible via unpaved roads and bushwhacking. The rugged terrain features northern hardwoods, spruce-fir forests, and several small streams feeding Graves Brook.



Map created by Andy Arthur on 2/26/2026 in QGIS 3.44.7-Solothurn. Data: NYS GIS and NYS DEC. More at andyarthur.org.



Access **Upper Chateaugay Lake** via Gate Road in Standish, which provides entry to the south end's primitive campsites. Managed by the NYSDEC, this area offers a remote boat launch for small watercraft. Enjoy secluded, first-come, first-served camping while exploring the lake's scenic southern wetlands.



Map created by Andy Arthur on 3/13/2026 in QGIS 3.44.7-Solothurn. Data: NYS GIS and NYS DEC. More at andyarthur.org.

