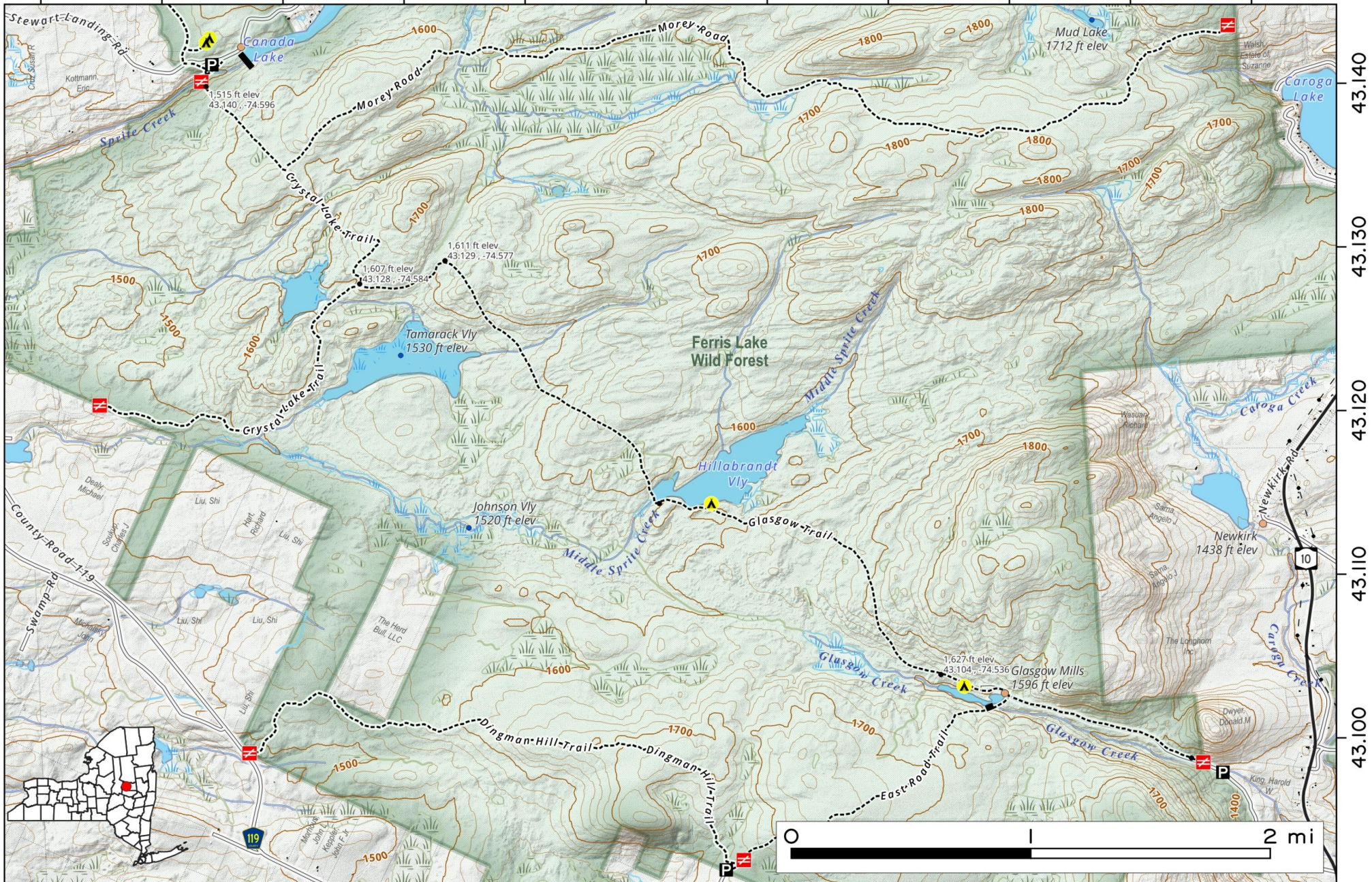


Glasgow Creek Trail and Crystal Lake Trail are a set of interconnected snowmobile trails located in the southern Adirondacks, running between Garoga and Stewart Landing, New York. They offer access to remote lakes. Trails can be swampy during high-water times like in early spring or after a heavy rain.



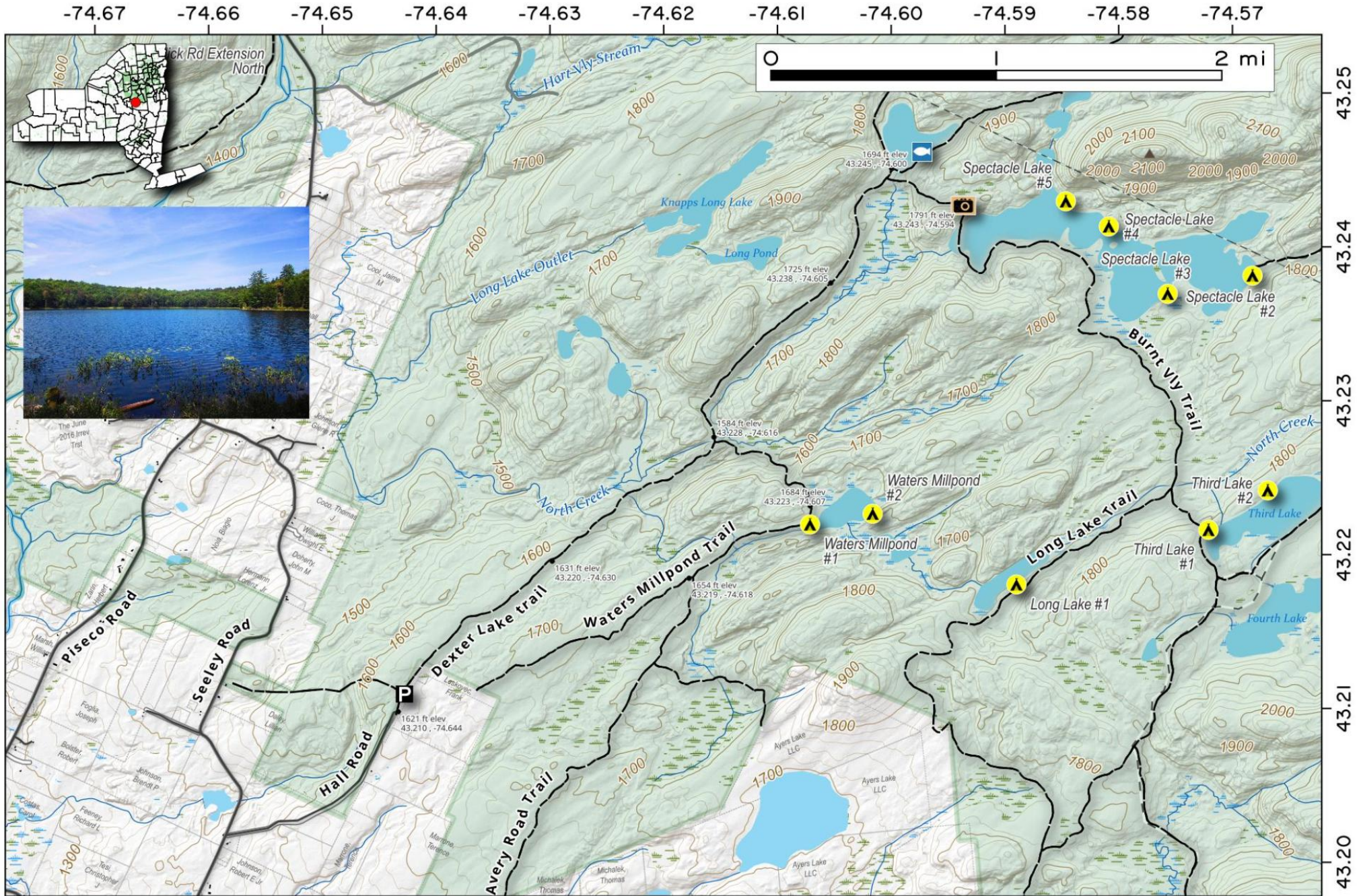
Map created by Andy Arthur on 11/17/2025 in QGIS 3.44.4-Solothurn. Contains NYS GIS and DEC data with additional campsites added by Andy. More maps at [andyarthur.org](http://andyarthur.org).

-74.610    -74.600    -74.590    -74.580    -74.570    -74.560    -74.550    -74.540    -74.530    -74.520    -74.510



**Dexter Lake Trail.** 3 1/2 miles back from Hall Road along a mostly dry in summer snowmobile trail, though there are a few swampy spots. You can take a side trip to Spectacle Lake, but note the Burnt Vly Snowmobile Trail crosses part of open water of lake. Alternative trips include return back via Waters Millpond, which is generally not real swampy or hiking back via the snowmobile trailhead off Seely Road.

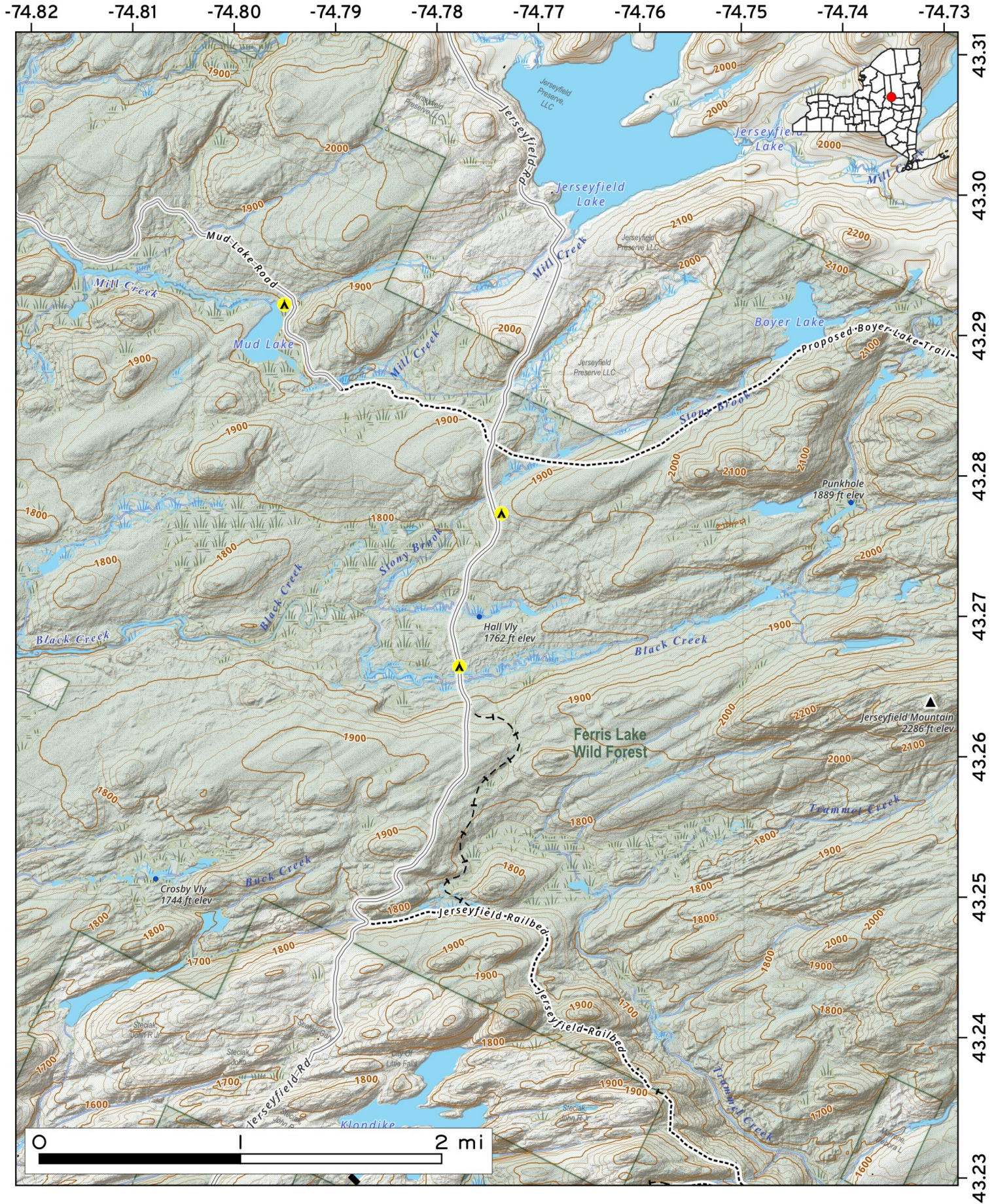
Map created by Andy Arthur on 5/13/2025 in QGIS 3.34.15-Prizren. Contains US Forest Service Base Map, NYS DEC data with additional campsites added by Andy. More maps at [andyarthur.org](http://andyarthur.org).



Along **Jerseyfield Road** in Ferris Lake Wild Forest, you'll find two designated roadside campsites (labeled #1 and #2) near Stratford, NY. These primitive, first-come, first-served sites are identified by "Camp Here" yellow discs and typically feature a fire ring and pit toilet, offering a secluded wilderness experience with no water or electric hookups.



Map created by Andy Arthur on 3/5/2026 in QGIS 3.44.7-Solothurn. Data: NYS GIS and NYS DEC. More at [andyarthur.org](http://andyarthur.org).



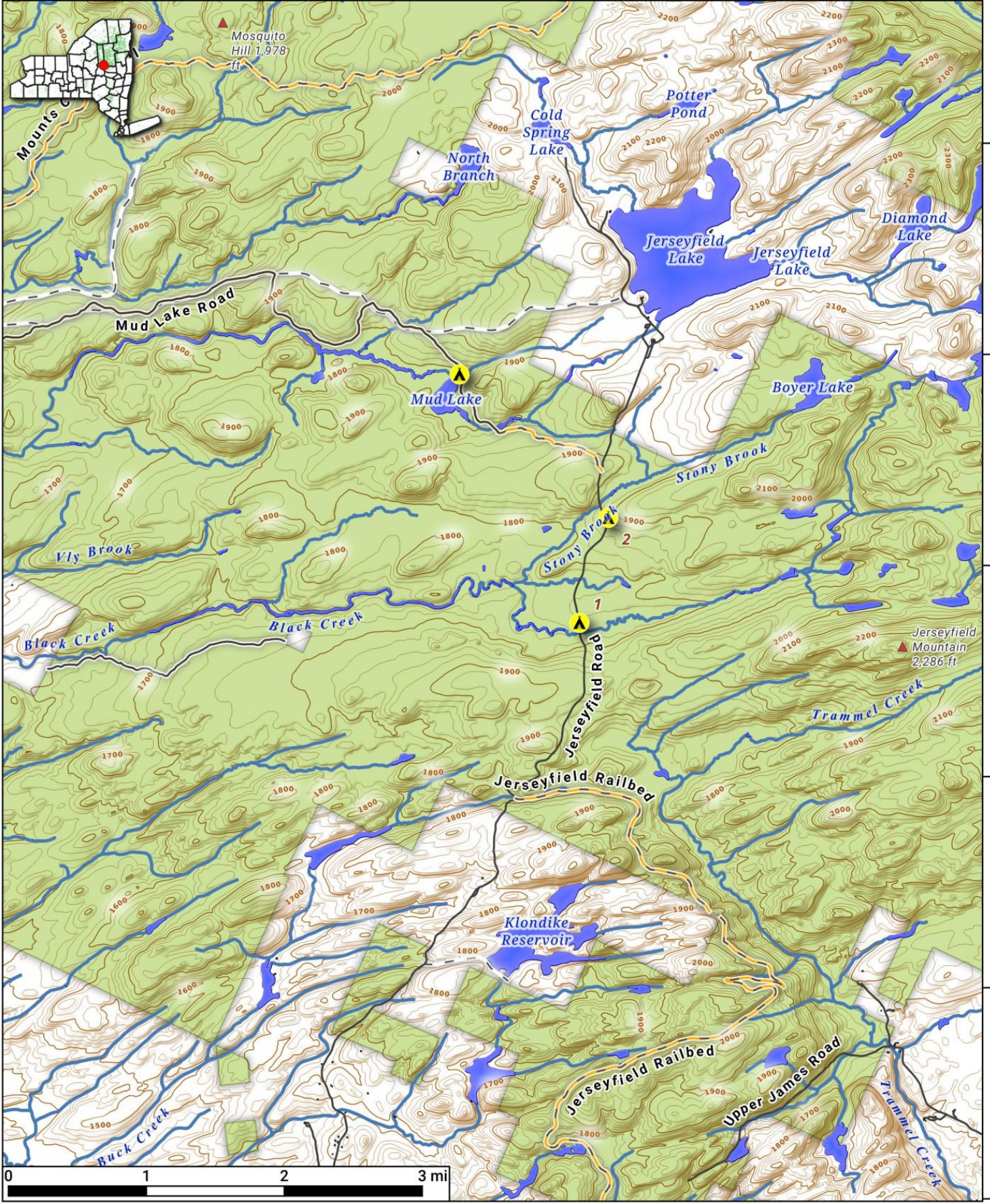
# Jerseyfield Road Campsites

There are two roadside campsites located along Jerseyfield Road on way up to Jerseyfield Lake.

Map is projected in Web Mercator 3857 and is 1: scale, True North. 20 foot contours. Created by Andy Arthur on 9/25/2023 in QGIS 3.32. Contains DEC Trails/Assets, Additional Campsites/Trails by Andy other data ©OpenStreetMap Data, OSM Maintainers. More maps at [andyarthur.org](http://andyarthur.org).



-74.84      -74.82      -74.79      -74.77      -74.75      -74.73

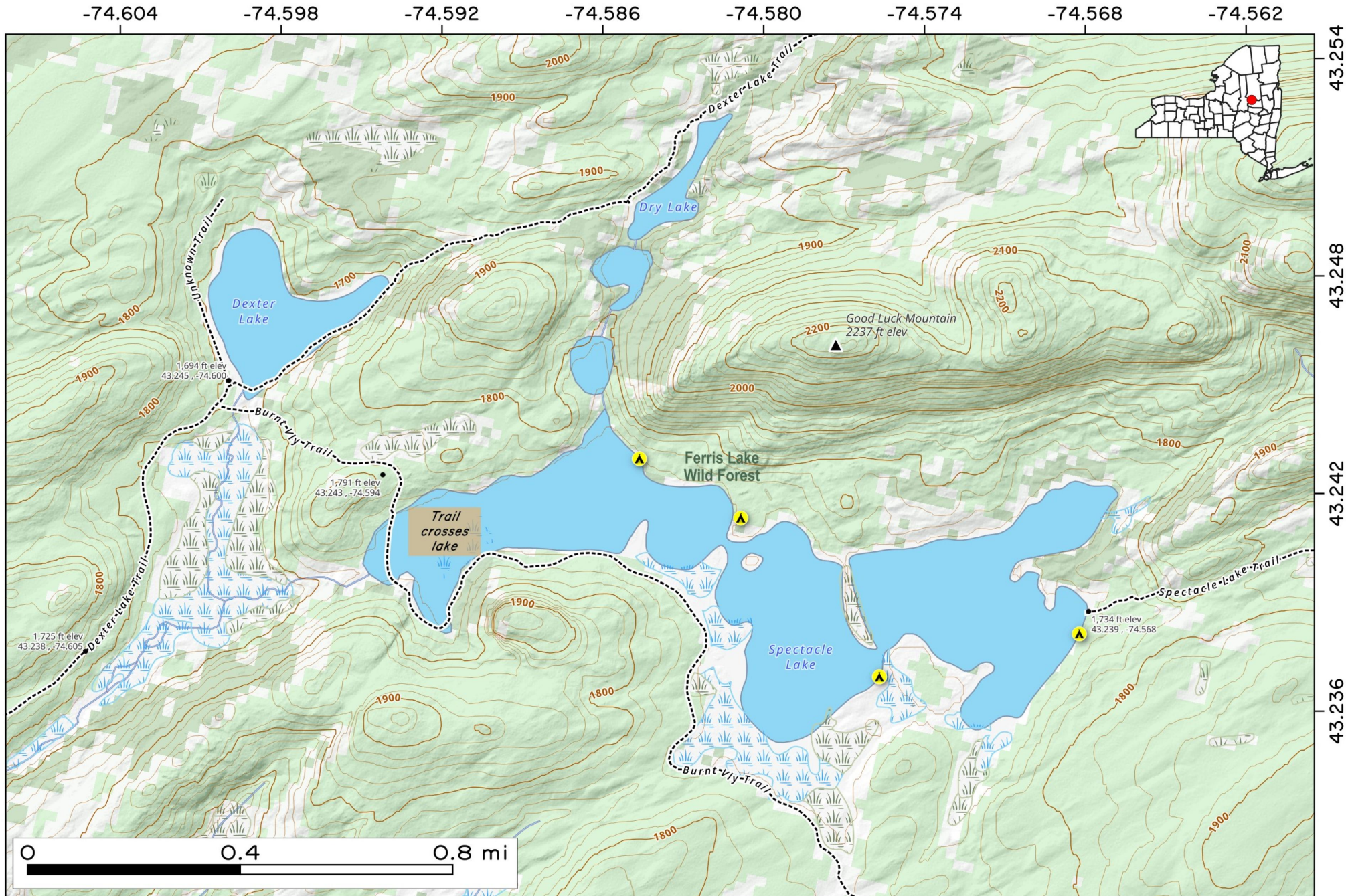


43.32  
43.29  
43.27  
43.25  
43.23  
43.21

Spectacle Lake is one of the largest ponds in the Ferris Lake Wild Forest, it can be accessed via NY 10 and Good Luck Lake Trail - Spectacle Lake Trail or the Dexter Lake Trail. Part of the Burnt Vly Snowmobile Trail goes across the lake, so you may have to bushwhack around that portion of the lake.

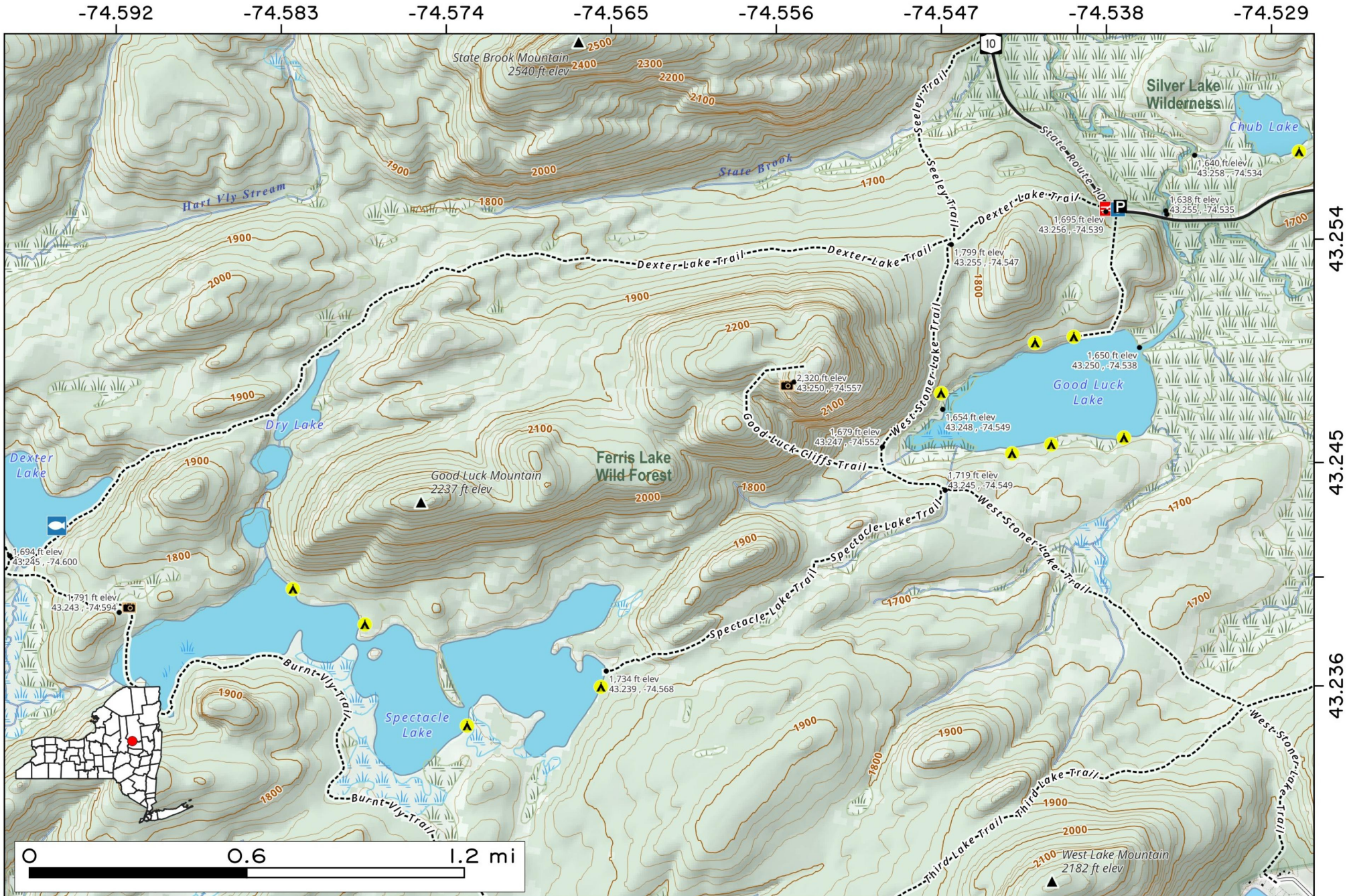


Map created by Andy Arthur on 1/12/2026 in QGIS 3.44.6-Solothurn. Contains NYS GIS and DEC data with additional campsites added by Andy. More maps at [andyarthur.org](http://andyarthur.org).



The Spectacle Lake Trail is 3.1 miles from the parking area on NY 10. You start on the Dexter Lake Trail, then head on to Third Lake Trail then down to Spectacle Lake Trail, following a well-signed snowmobile trail.

Map created by Andy Arthur on 12/4/2025 in QGIS 3.44.5-Solothurn. Contains NYS GIS and DEC data with additional campsites added by Andy. More maps at [andyarthur.org](http://andyarthur.org).



Third Lake Trail. Snowmobile trail and old road from south of the Arietta Inn along NY 1 to Third Lake, a remote 63-acre lake with campsites on the north side.

Map created by Andy Arthur on 11/7/2025 in QGIS 3.44.4-Solothurn. Contains NYS GIS and DEC data with additional campsites added by Andy. More maps at [andyarthur.org](http://andyarthur.org).

