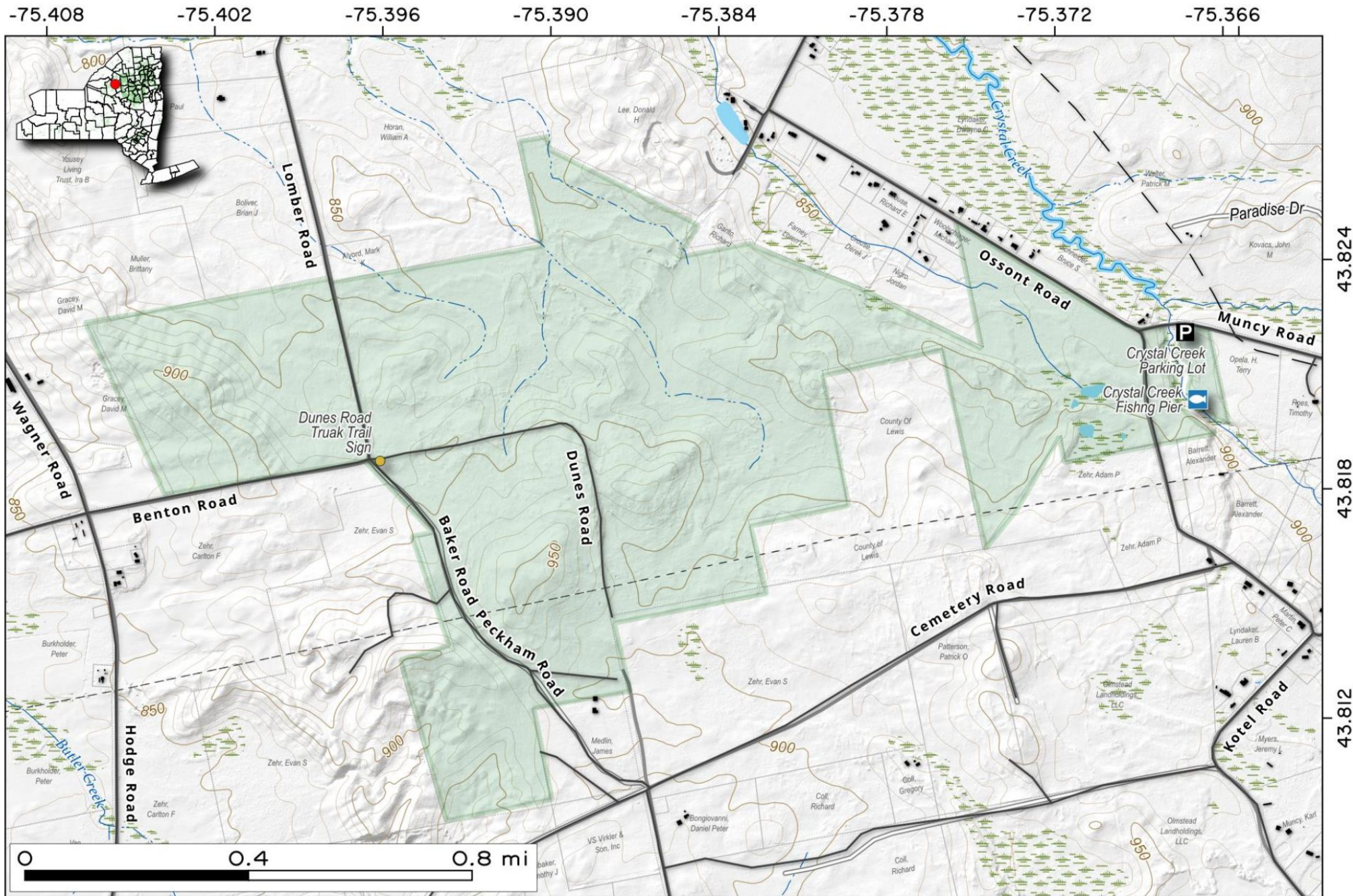


# Indian Pipe State Forest.

Around 600 acres of state land east of New Bremen in Lewis County.

Map created by Andy Arthur on 5/16/2025 in QGIS 3.34.15-Prizren. Contains US Forest Service Base Map, NYS DEC data with additional campsites added by Andy. More maps at [andyarthur.org](http://andyarthur.org).

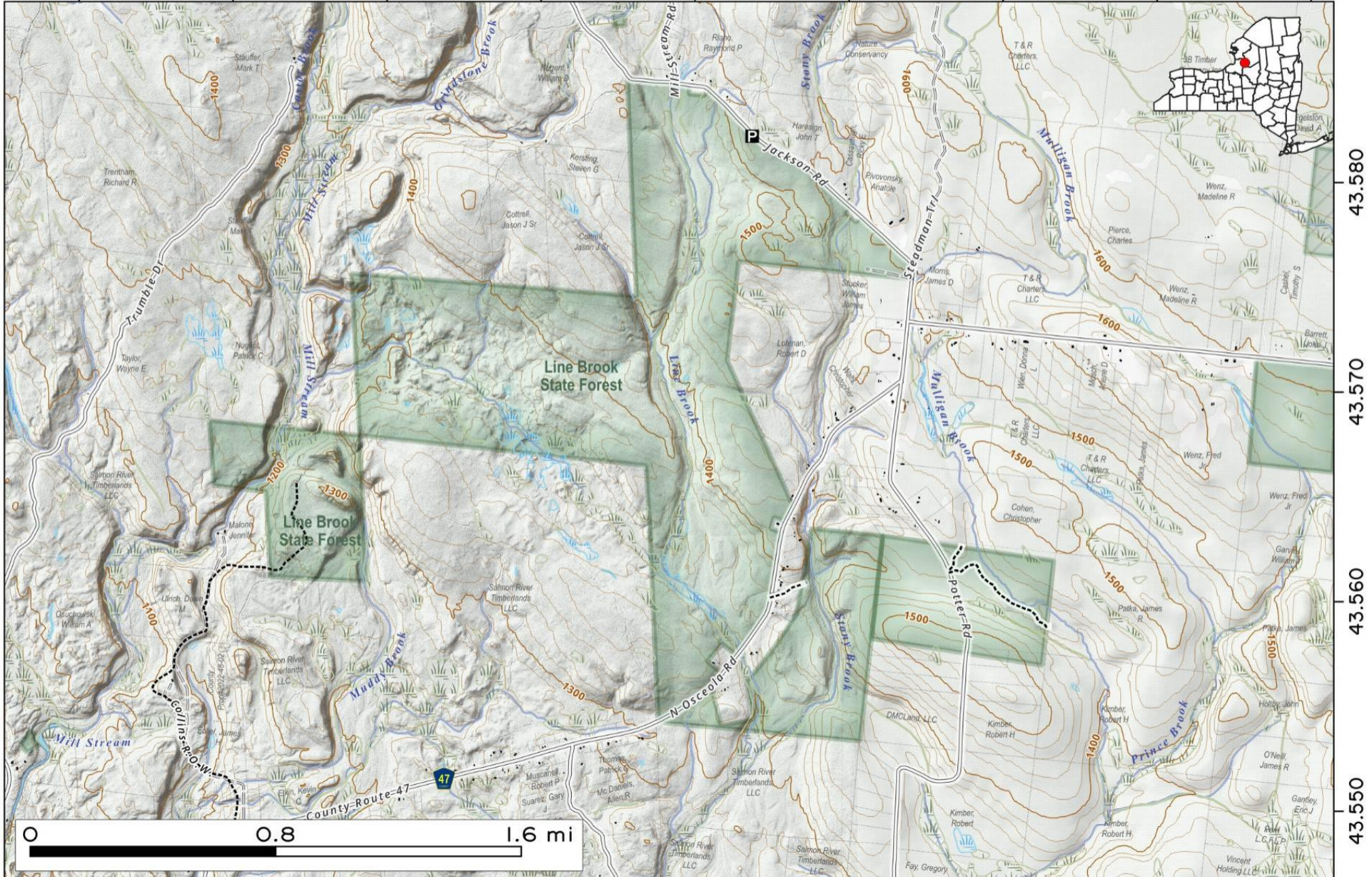


Line Brook State Forest is east of the Salmon River Reservoir on the Tug Hill Plateau. The forest is primarily comprised of natural hardwood and conifer stands. It is a popular destination for nature enthusiasts, hunters, and trappers seeking white-tailed deer, bear, and various small game species.



Map created by Andy Arthur on 11/6/2025 in QGIS 3.44.4-Solothurn. Contains NYS GIS and DEC data with additional campsites added by Andy. More maps at [andyarthur.org](http://andyarthur.org).

-75.800      -75.790      -75.780      -75.770      -75.760      -75.750      -75.740      -75.730      -75.720



43.580

43.570

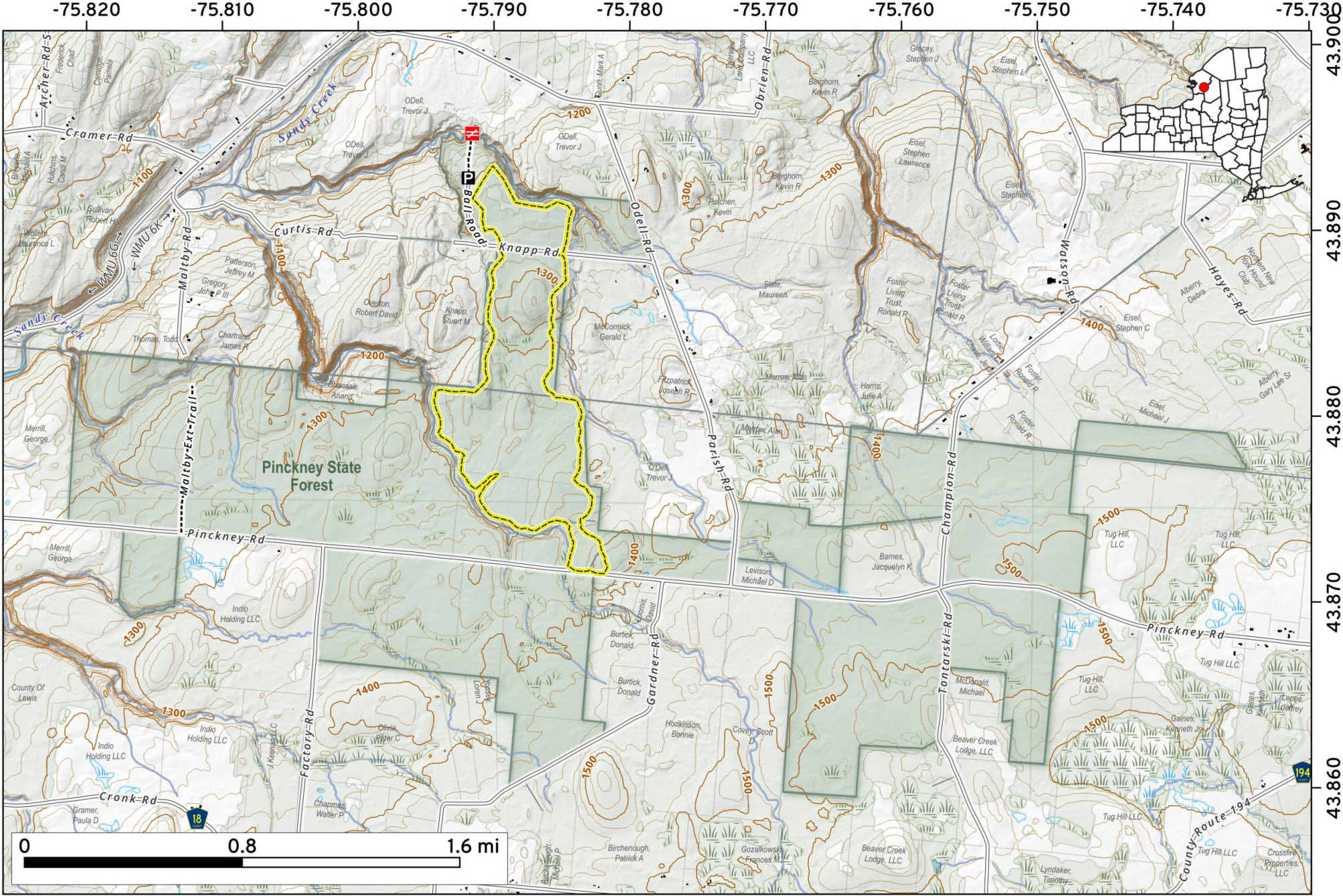
43.560

43.550

Located on the Tug Hill Plateau in Lewis and Jefferson counties, the 2,091-acre **Pinckney State Forest** is known for harsh winters and shallow soils. It offers primitive camping, trout fishing in Sandy Creek tributaries, and the 4.3-mile Pinckney Bike Trail, featuring scenic views of a deep woodland gulf.



Map created by Andy Arthur on 2/10/2026 in QGIS 3.44.7-Solothurn. Data: NYS GIS and NYS DEC. More at [andyarthur.org](http://andyarthur.org).



# Swancott Mill State Forest. 744 acre state forest northwest of City of Rome Reservoir N and West Leyden, off Osceola Road and Swancott Mill Road.

Map created by Andy Arthur on 1/8/2026 in QGIS 3.44.6-Solothurn. Contains NYS GIS and DEC data with additional campsites added by Andy. More maps at [andyarthur.org](http://andyarthur.org).

