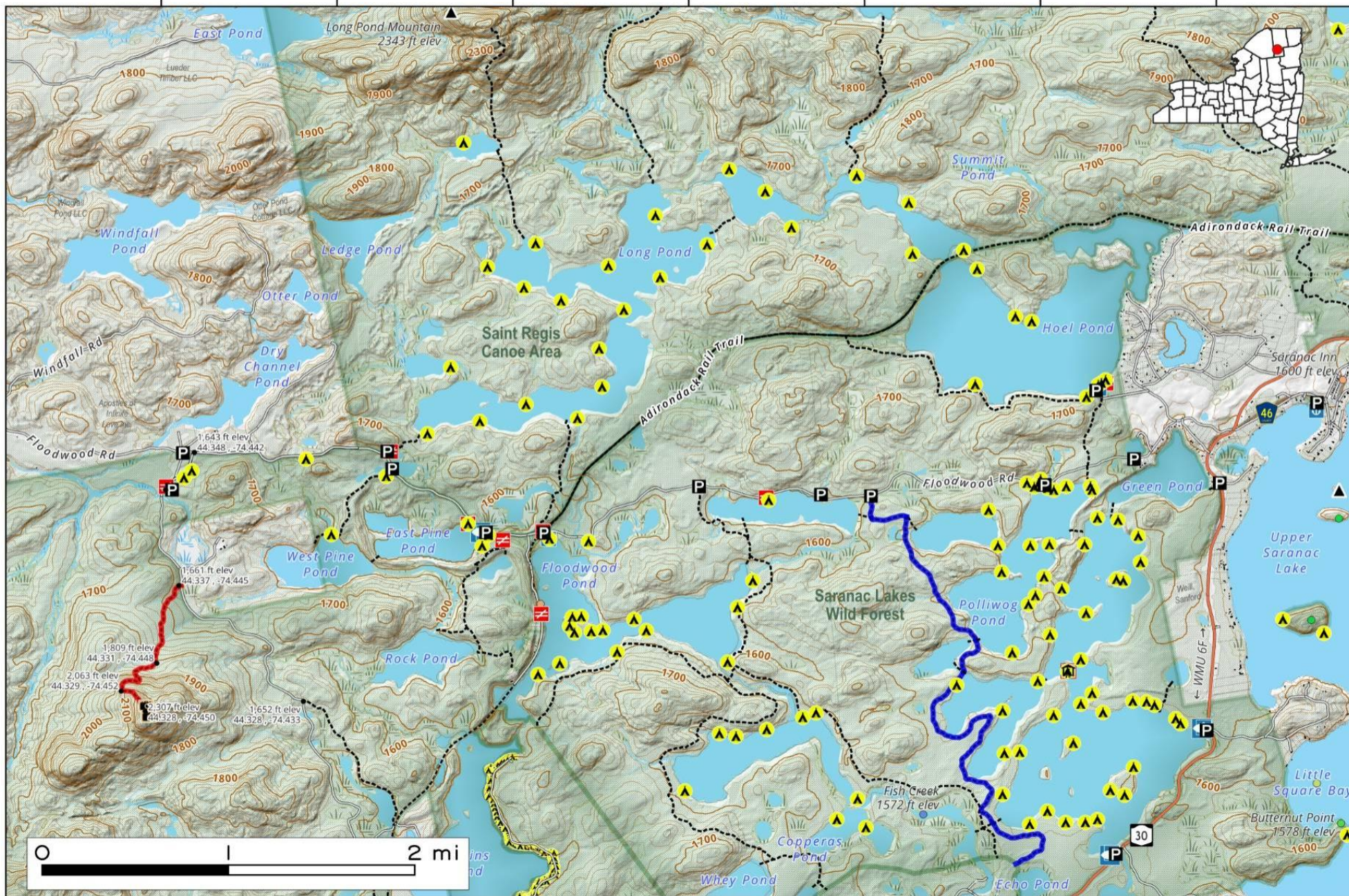


Floodwood Road Campsites. The various free primitive campsites and lakes along Floodwood Road in the St. Regis Canoe Area.

Map created by Andy Arthur on 10/22/2025 in QGIS 3.44.3-Solothurn. Contains NYS GIS and DEC data with additional campsites added by Andy. More maps at andyarthur.org.



-74.442 -74.423 -74.404 -74.385 -74.366 -74.347 -74.328

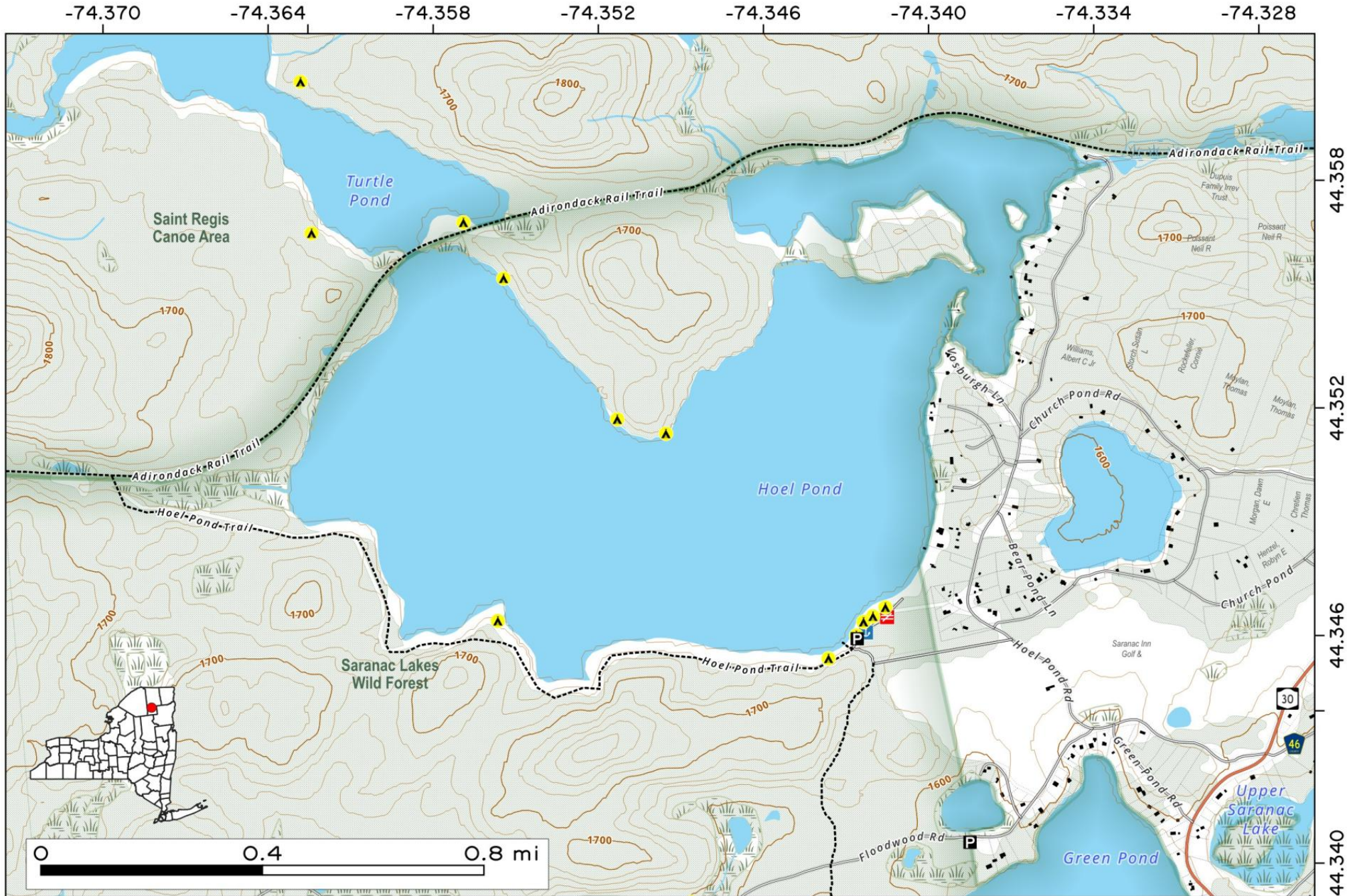


44.365
44.346
44.327
44.308

Hoel Pond in the St. Regis Canoe Area can be access via Hoel Pond Road (off Floodwood Pond). The lake is dotted by houses and cabins along it's east shore with the Adirondack Rail Trail n the north shore. Campsites on the south shore can be accessed via vehicle.

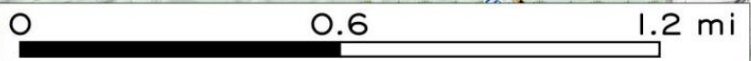
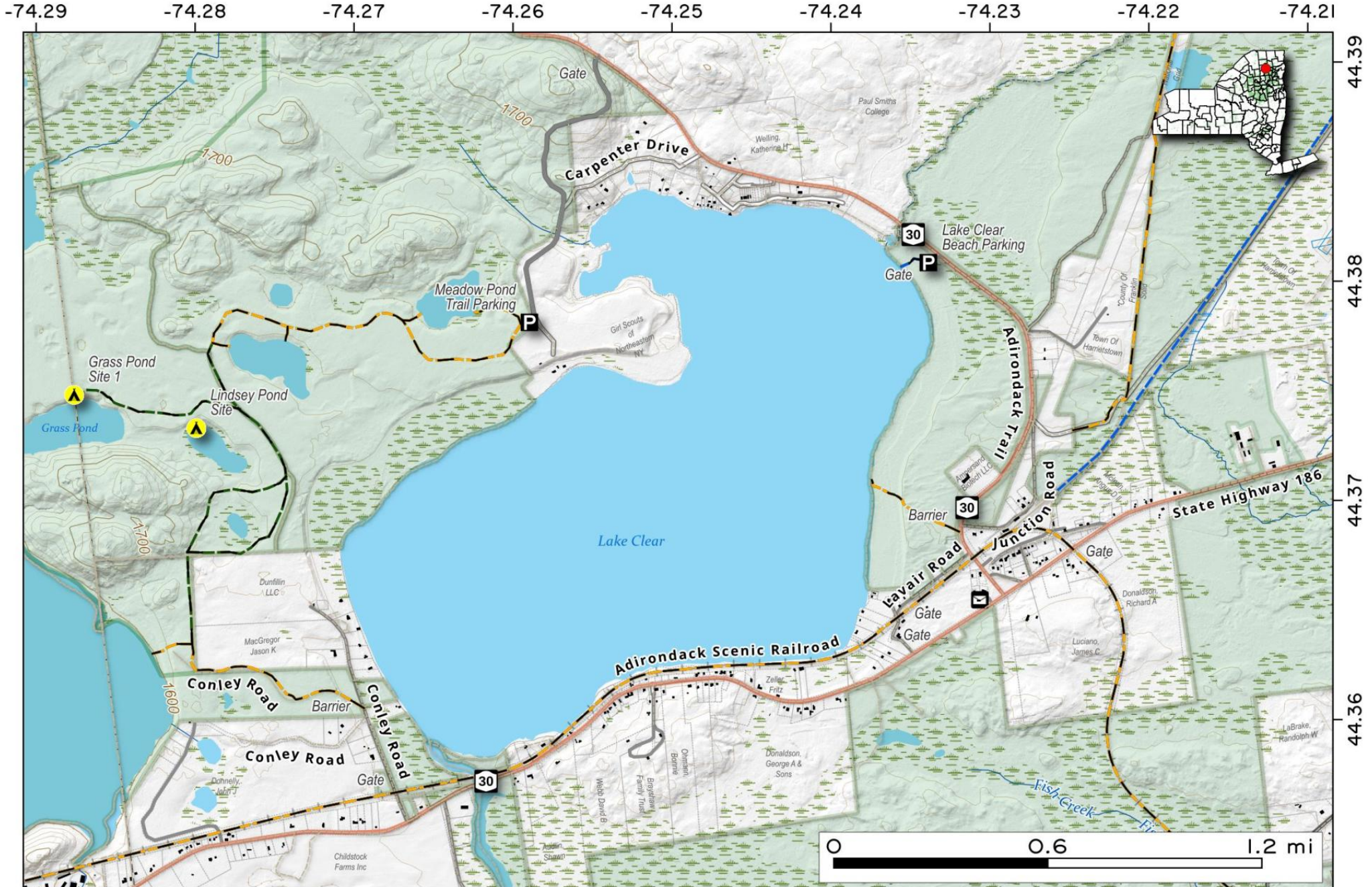


Map created by Andy Arthur on 10/20/2025 in QGIS 3.44.3-Solothurn. Contains NYS GIS and DEC data with additional campsites added by Andy. More maps at andyarthur.org.



Lake Clear. Large 1,205 acre lake northeast of St. Regis Canoe Area. Developed with private property along much of shore, however there is access from a parking area on NY 30 with a short portage to the lake.

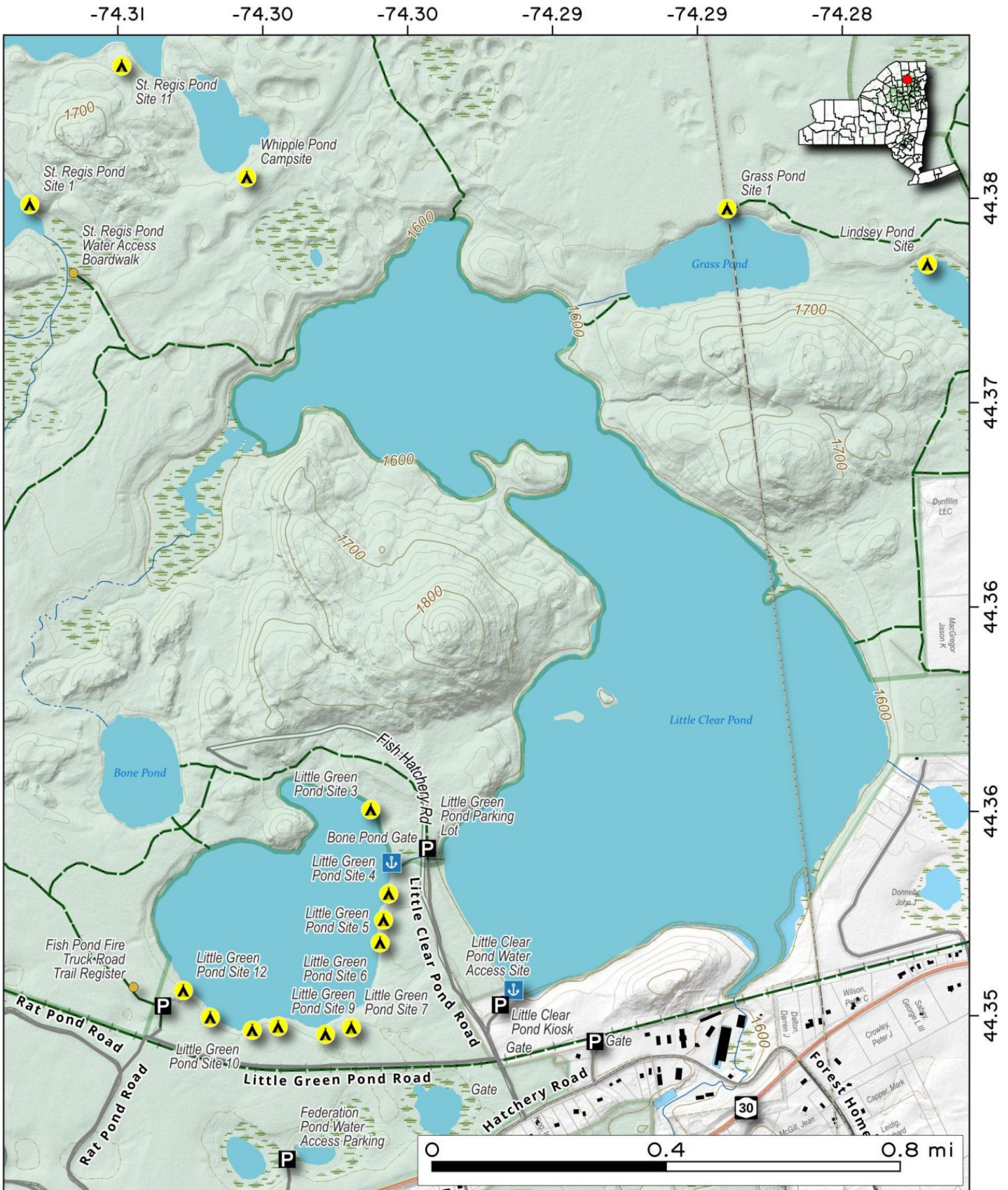
Map created by Andy Arthur on 3/25/2025 in QGIS 3.34.15-Prizren. Contains US Forest Service Base Map, NYS DEC data with additional campsites added by Andy. More maps at andyarthur.org.



Little Clear Pond.

385 acre pond north of the Fish Hachery in the St. Regis Canoe Area.

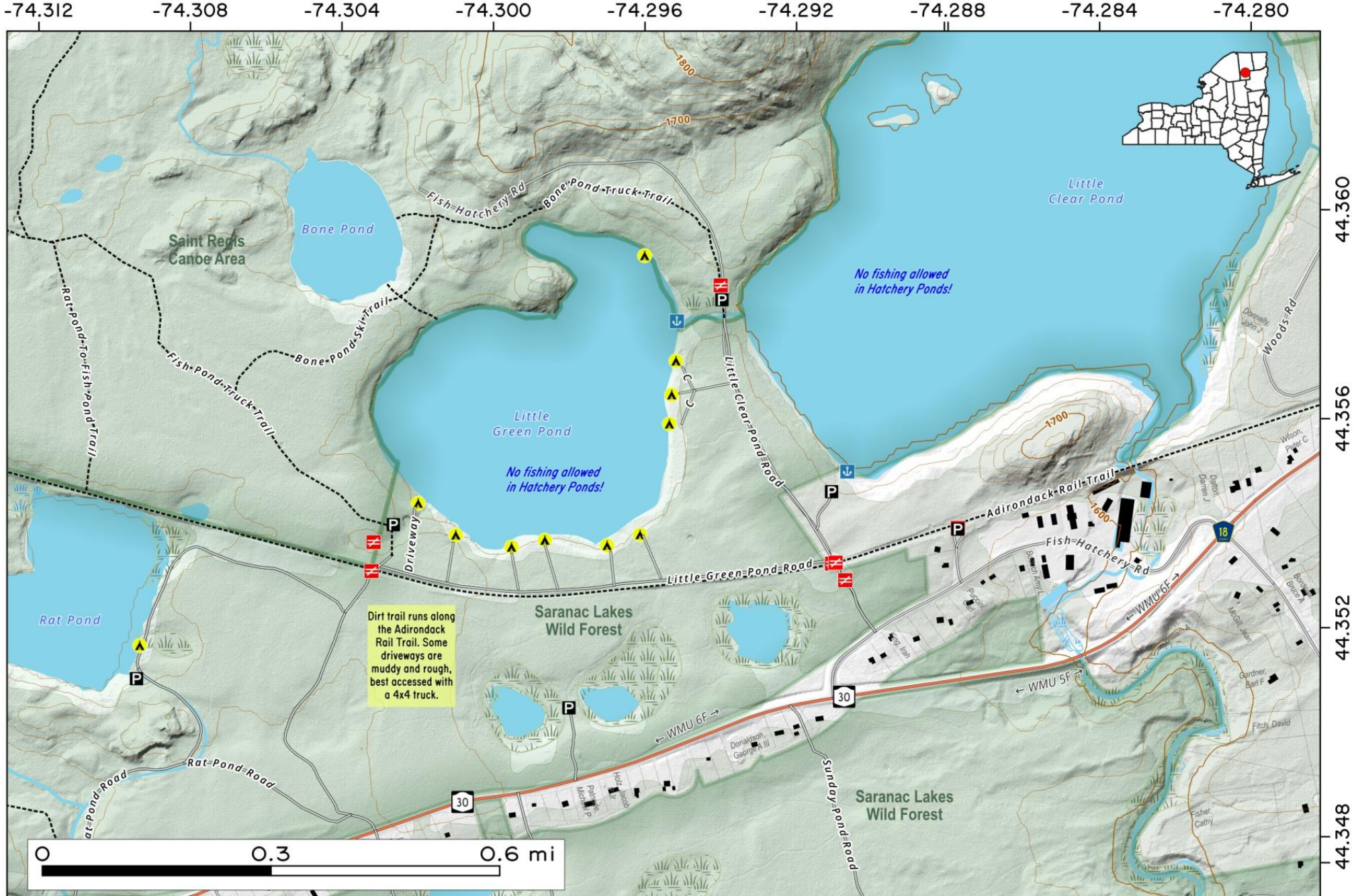
Map created by Andy Arthur on 5/6/2025 in QGIS 3.34.15-Prizren. Contains US Forest Service Base Map, NYS DEC data with additional campsites added by Andy. More maps at andyarthur.org.



Little Green Pond Camping Area. Originally maintained by the Adirondack Fish Hatchery, these campsites are like other primitive campsites but with driveways running each site with decent screening between the sites. Not quite as densely packed as a campground but not a true wilderness camping experience.



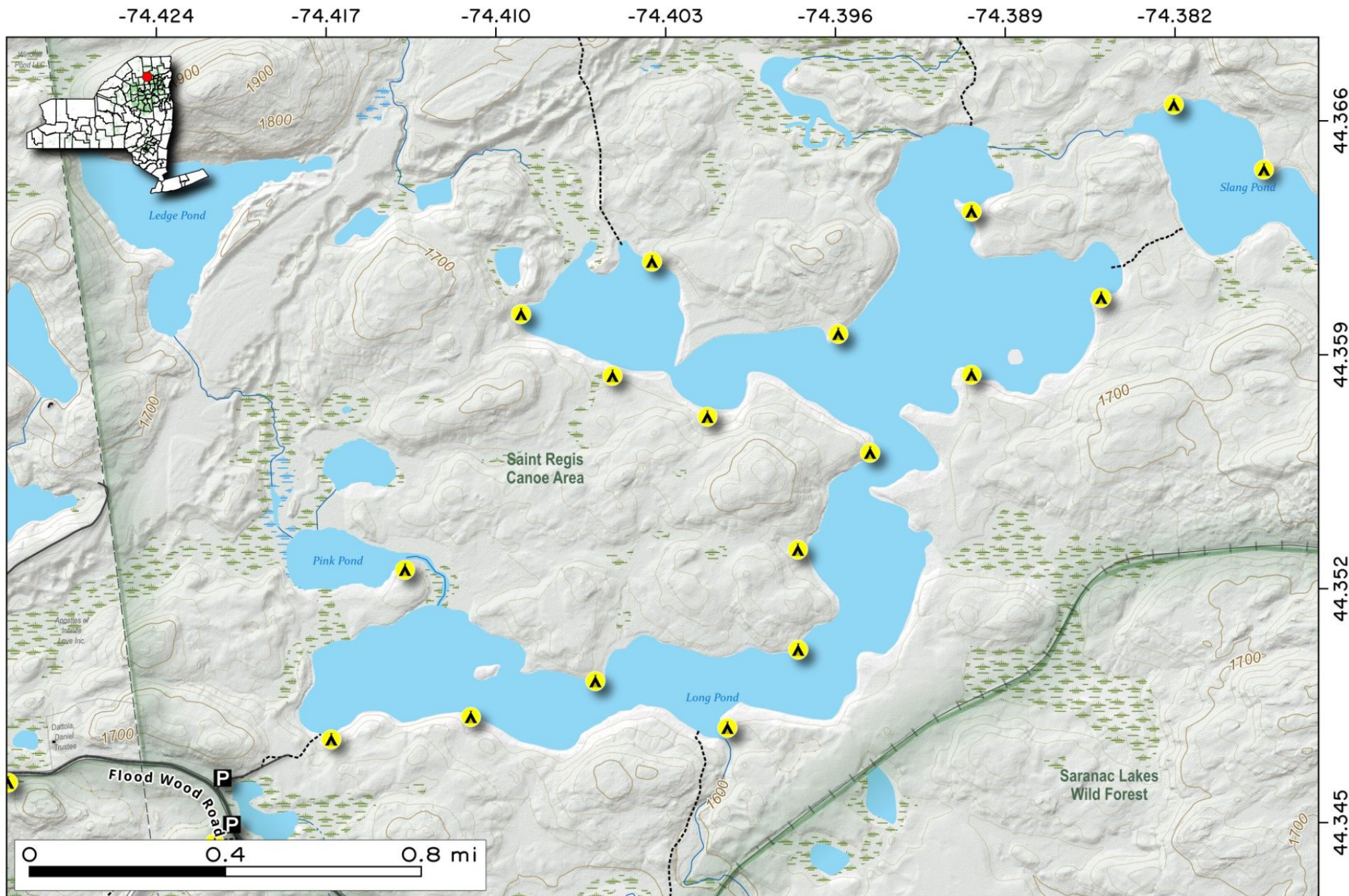
Map created by Andy Arthur on 10/22/2025 in QGIS 3.44.3-Solothurn. Contains NYS GIS and DEC data with additional campsites added by Andy. More maps at andyarthur.org.



Dirt trail runs along the Adirondack Rail Trail. Some driveways are muddy and rough, best accessed with a 4x4 truck.

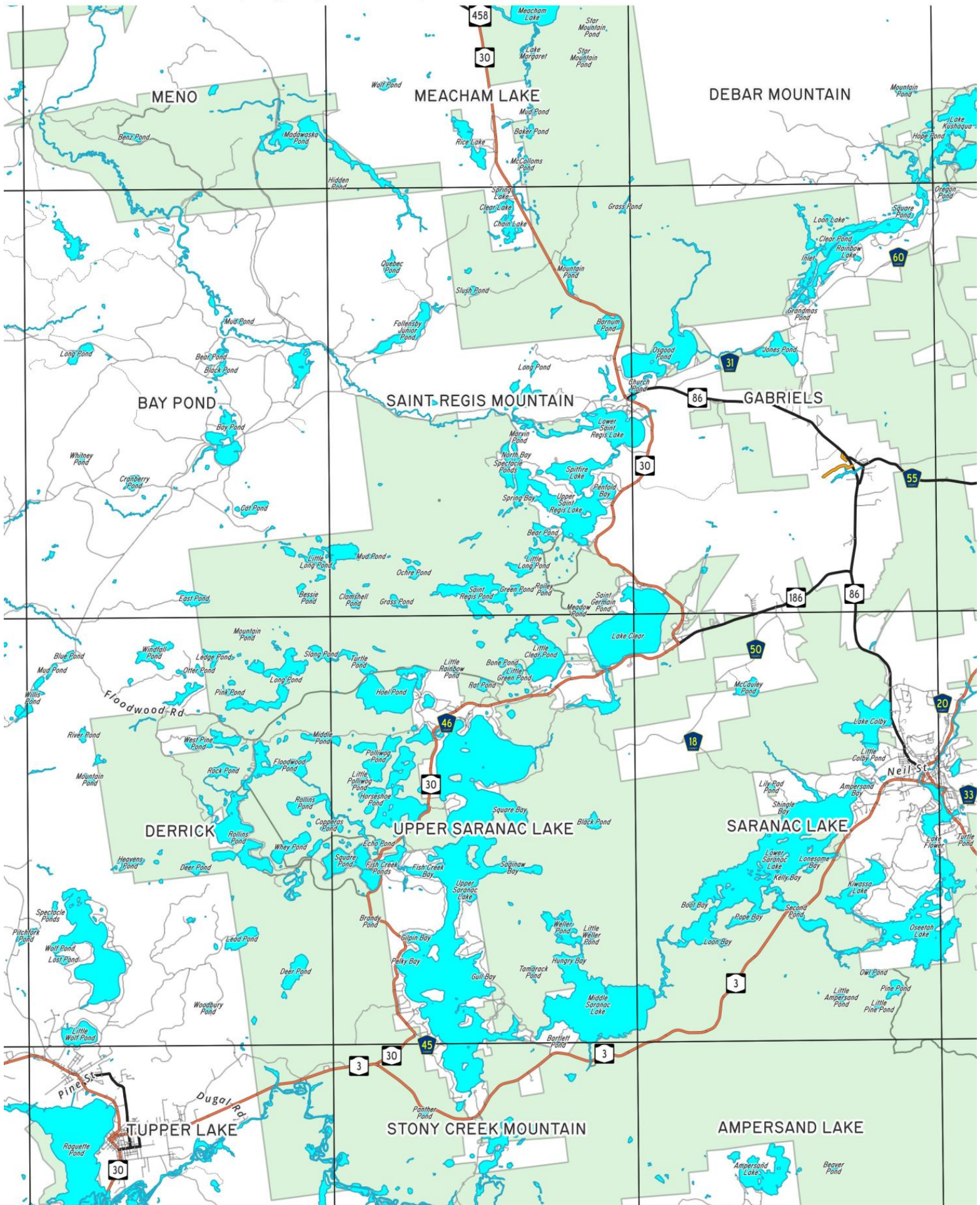
Long Pond. Access to this waterway is via a parking off of Floodwood Road in a pull-off area past East Pine Pond. It is a short canoe and kayak carry into Long Pond.

Map created by Andy Arthur on 7/11/2025 in QGIS 3.44.0-Solothurn. Contains US Forest Service Base Map, NYS DEC data with additional campsites added by Andy. More maps at andyarthur.org.



Saint Regis Canoe Area USGS 1:24k Topographic Map Index

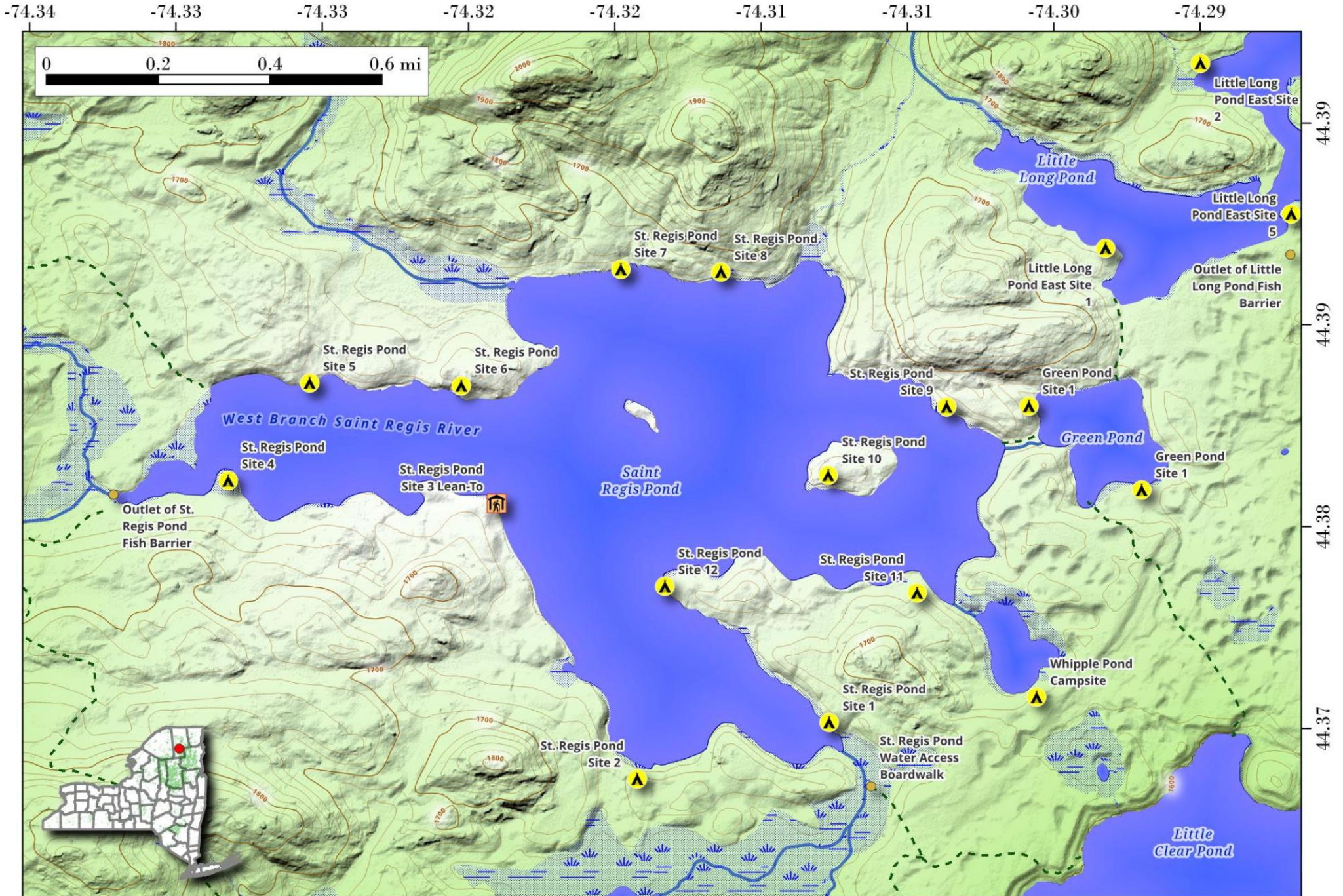
Download Free USGS Topographic Maps Here:
<https://tinyurl.com/nyusgstopo>
Map by Andy Arthur, October 23, 2025



Saint Regis Pond.

The 386-acre pond that is considered the jewel of the Saint Regis Canoe Area.

Map created by Andy Arthur on 7/12/2024 in QGIS 3.34.8-Prizren. Contains DEC Trails/Assets, Additional Campsites/Trails by Andy other data ©OpenStreetMap Data, OSM Maintainers. More maps at andyarthur.org.



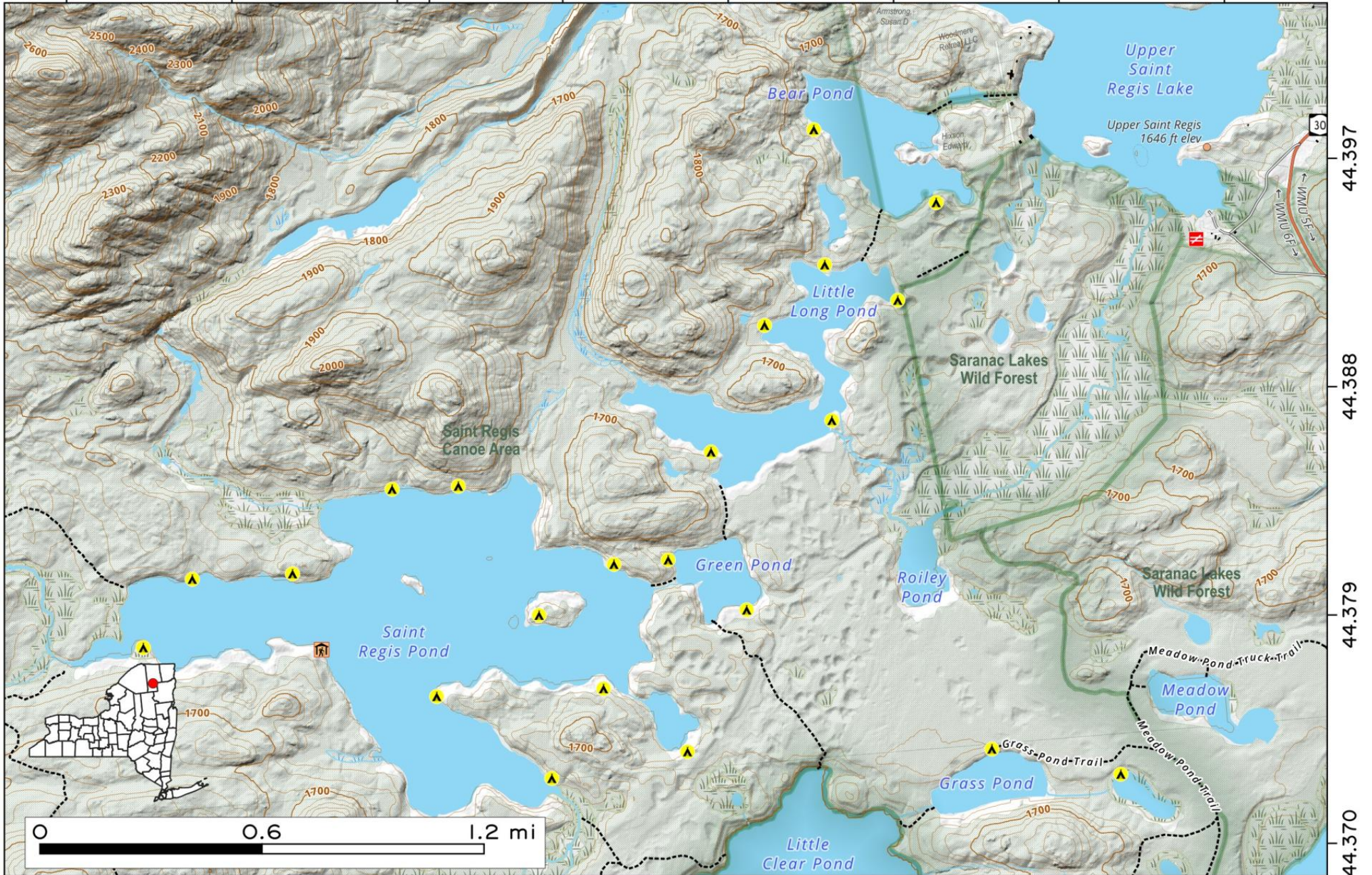
St. Regis Pond, Little Long Pond, Bear Pond, Upper St. Regis Lake.

Campsites and portages between these series of lakes in the St. Regis Canoe area.

Map created by Andy Arthur on 10/22/2025 in QGIS 3.44.3-Solothurn. Contains NYS GIS and DEC data with additional campsites added by Andy. More maps at andyarthur.org.



-74.331 -74.322 -74.313 -74.304 -74.295 -74.286 -74.277 -74.268



44.397

44.388

44.379

44.370

Tuttle and Slang Ponds. Two interconnected ponds to the north of the Hoel Pond and the east of Long Pond, both of which must have accessed via a short portage.

Map created by Andy Arthur on 10/22/2025 in QGIS 3.44.3-Solothurn. Contains NYS GIS and DEC data with additional campsites added by Andy. More maps at andyarthur.org.

