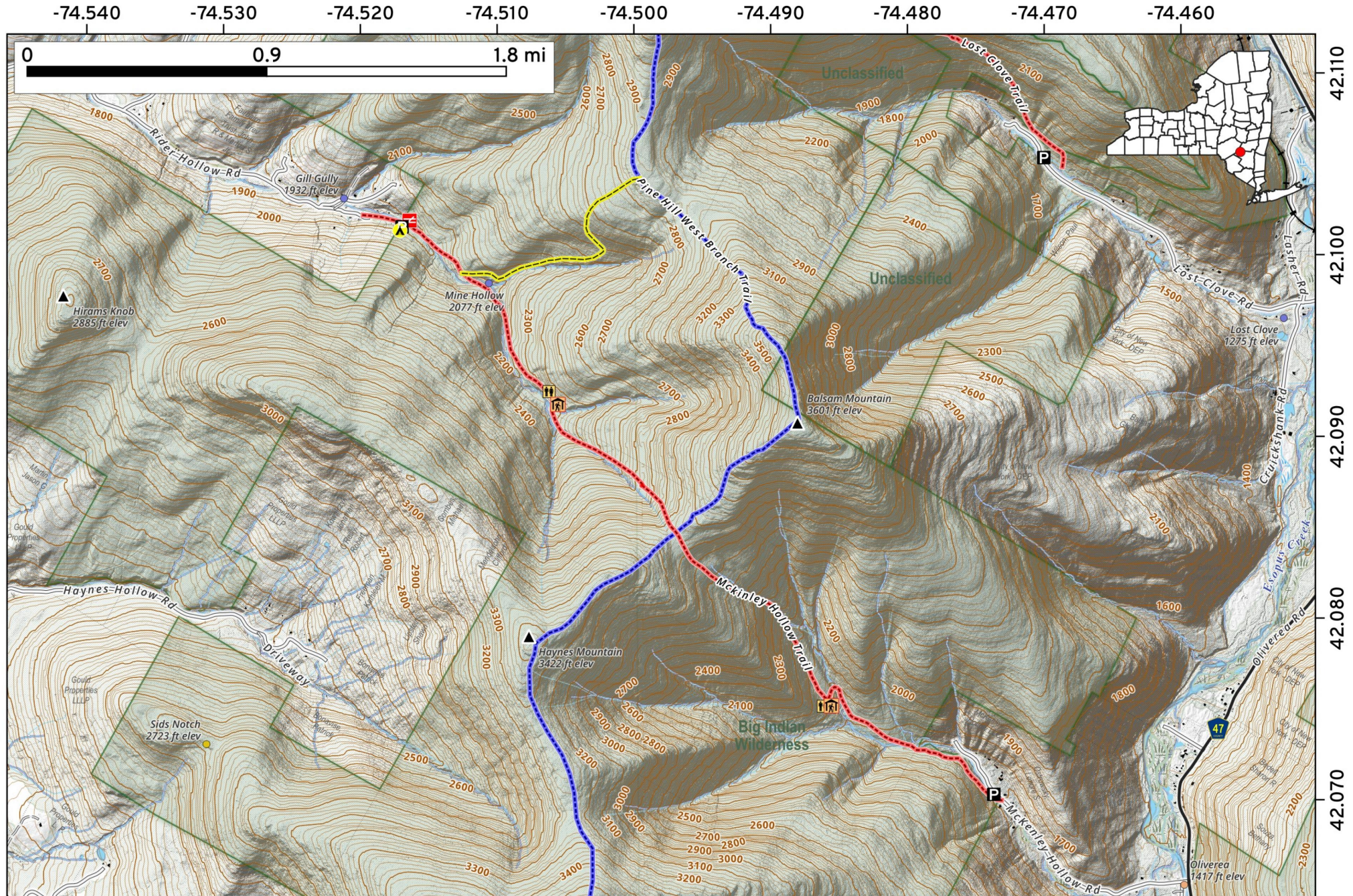


Allaben Tent Sites Map, March 31, 2021 by AndyArthur.org in QGIS 3.18.0-Zürich and Python. Street Map is Copyright © OpenStreetMap contributors, CC BY-SA. NYSDEC Data: LiDAR/DEM, Borders, ADK Wetlands, Trails, Assets. True North. 1 inch = 0.1 miles. Projection: NAD83 / UTM zone 18N. Coordinates: 0.005° latitude-longitude (WGS84). Contours are 20 feet. Map is centered on 42.1075, -74.3426.

The **McKinley Hollow Trail** (often spelled McKenley) is a 1.9-mile red-marked trail in the Big Indian Wilderness of the Catskills. It is widely used to access the Pine Hill-West Branch Trail, providing a gateway to several "Catskill 3500" peaks, most notably Balsam Mountain.



Map created by Andy Arthur on 2/20/2026 in QGIS 3.44.7-Solothurn. Data: NYS GIS and NYS DEC. More at andyarthur.org.



Located in the Shandaken Wild Forest, the **Rochester Hollow Trail** is a peaceful, 6.5-mile network perfect for hiking or cross-country skiing. This gentle carriage road follows a scenic stream, passing historic stone walls, the John Burroughs monument, and an Adirondack lean-to. It offers a family-friendly escape with lush forest views



Map created by Andy Arthur on 2/17/2026 in QGIS 3.44.7-Solothurn. Data: NYS GIS and NYS DEC. More at andyarthur.org.

