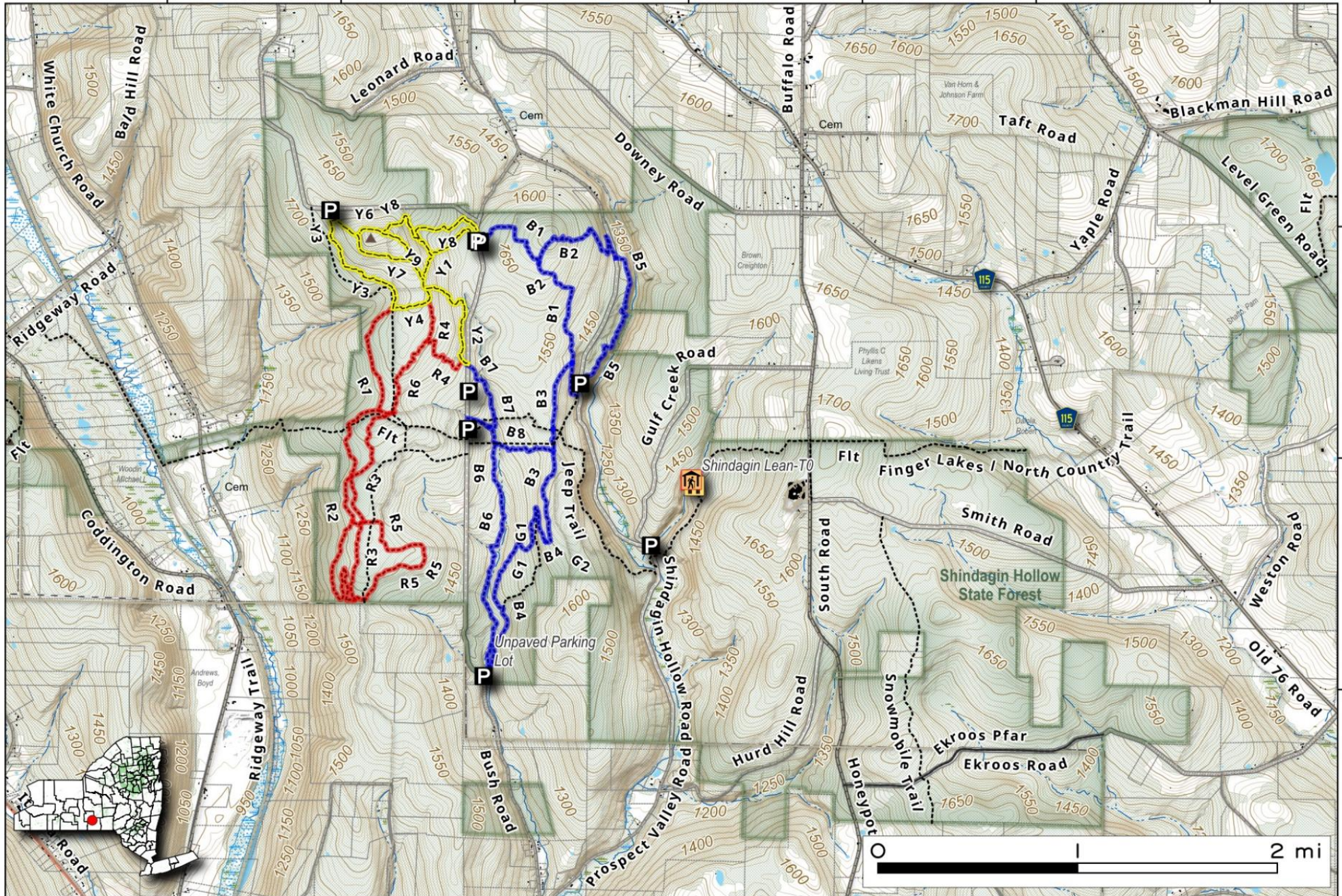


Shindagin Hollow State Forest, 5,266 acres in Caroline outside of Ithaca, known for its mountain bike trail system shown on this map.

Map created by Andy Arthur on 9/29/2025 in QGIS 3.44.3-Solothurn. Contains US Forest Service Base Map, NYS DEC data with additional campsites added by Andy. More maps at andyarthur.org.



-76.381 -76.364 -76.347 -76.330 -76.313 -76.296 -76.279



42.347
42.330
42.313

