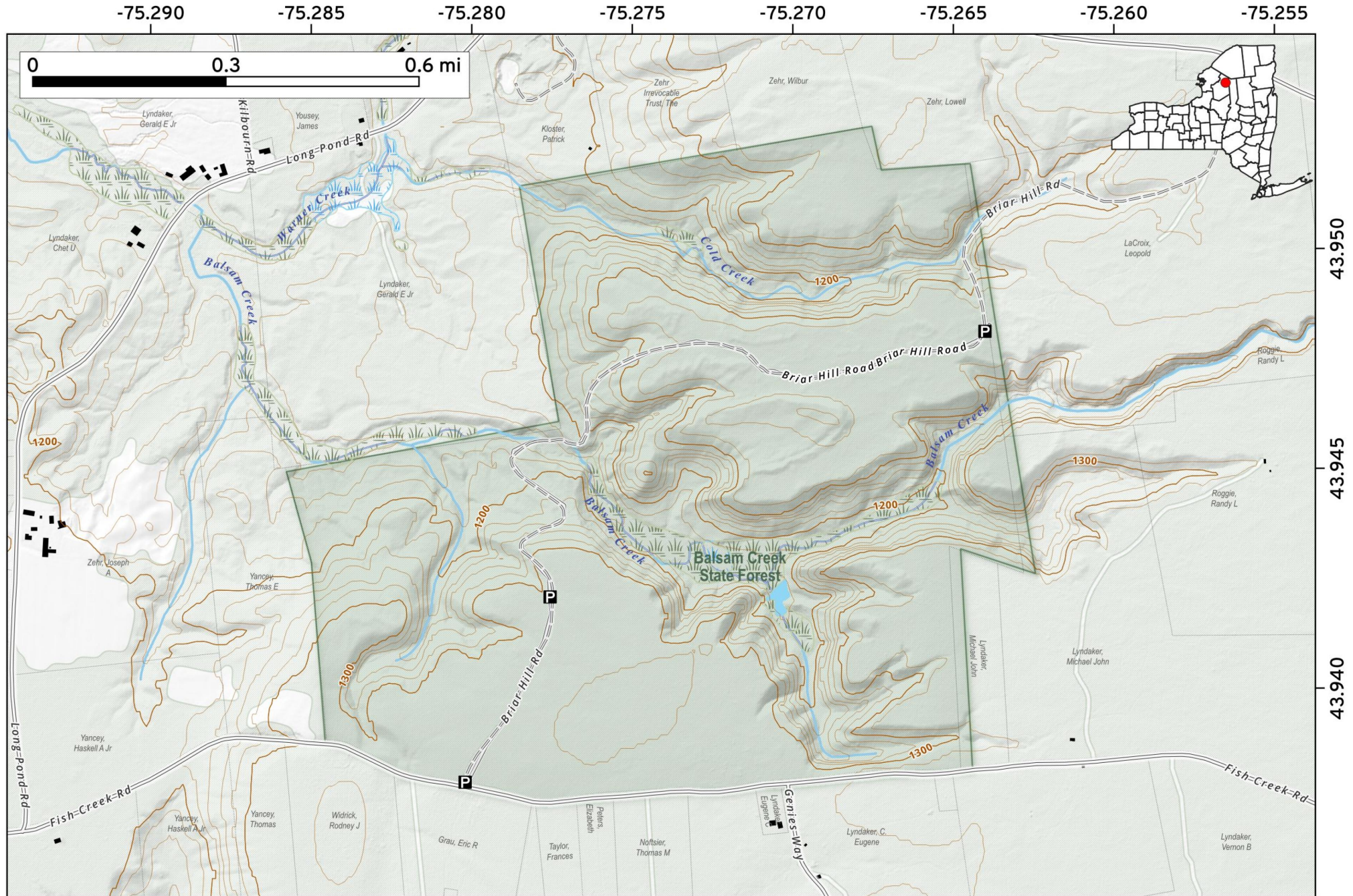


**Balsam Creek State Forest** covers 559 acres in the Adirondack foothills of Lewis County, New York. Its defining feature is a dramatic 150-foot-deep valley carved by Balsam Creek.

Map created by Andy Arthur on 4/16/2026 in QGIS 3.44.9-Solothurn. Data: NYS GIS and NYS DEC. More at [andyarthur.org](http://andyarthur.org).



**Onjebonge State Forest** in Harrisville, New York, spans 1,825 acres of diverse terrain. Its granite-based soils support hardwood stands like maple and ash, alongside red and white pine plantations. Visitors enjoy hunting, primitive camping, and wildlife viewing amidst rolling landscapes and beaver-flooded wetlands.



Map created by Andy Arthur on 3/9/2026 in QGIS 3.44.7-Solothurn. Data: NYS GIS and NYS DEC. More at [andyarthur.org](http://andyarthur.org).

