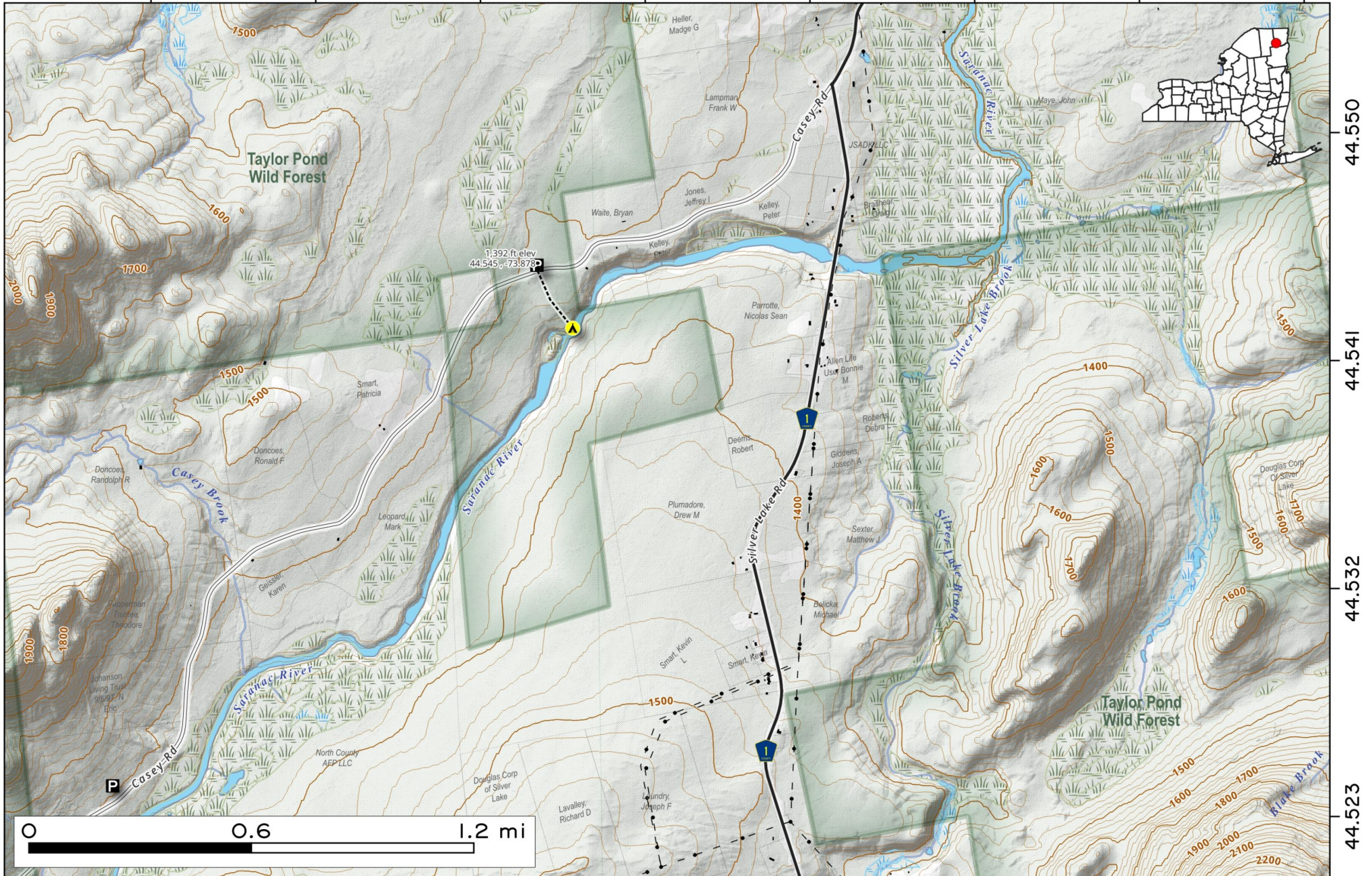


The Casey Road Campsite in Black Brook, north of Silver Lake and Union on the Saranac River is a tent site that is popular with canoers paddling the Northern Canoe Trail.

Map created by Andy Arthur on 1/3/2026 in QGIS 3.44.6-Solothurn. Contains NYS GIS and DEC data with additional campsites added by Andy. More maps at andyarthur.org.

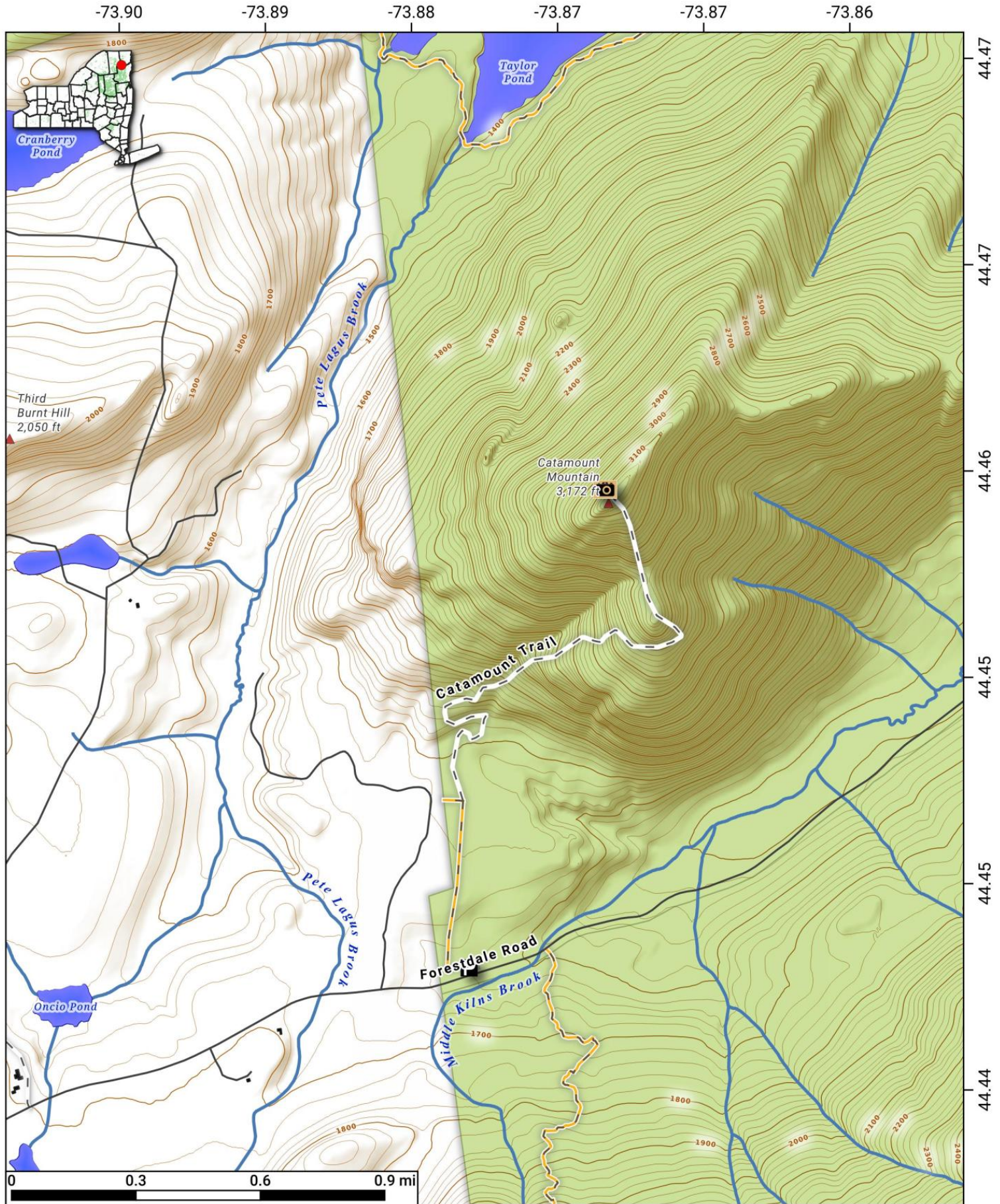


-73.899 -73.890 -73.881 -73.872 -73.863 -73.854 -73.845 -73.836



Catamount Mountain. Catamount Mountain, located off Forestdale Road in Black Brook, is a 4.4-mile out-and-back trail that offers stunning vistas of the High Peaks. The final stretch of 0.8 miles ascends steeply over exposed rock, presenting hikers with numerous scrambles.

Map is projected in NAD83 / UTM zone 18N and is 1:19k scale, True North. 20 foot contours. Created by Andy Arthur on 10/10/2023 in QGIS 3.32.3-Lima. Contains DEC Trails/Assets, Additional Campsites/Trails by Andy other data ©OpenStreetMap Data, OSM Maintainers. More maps at andyarthur.org.

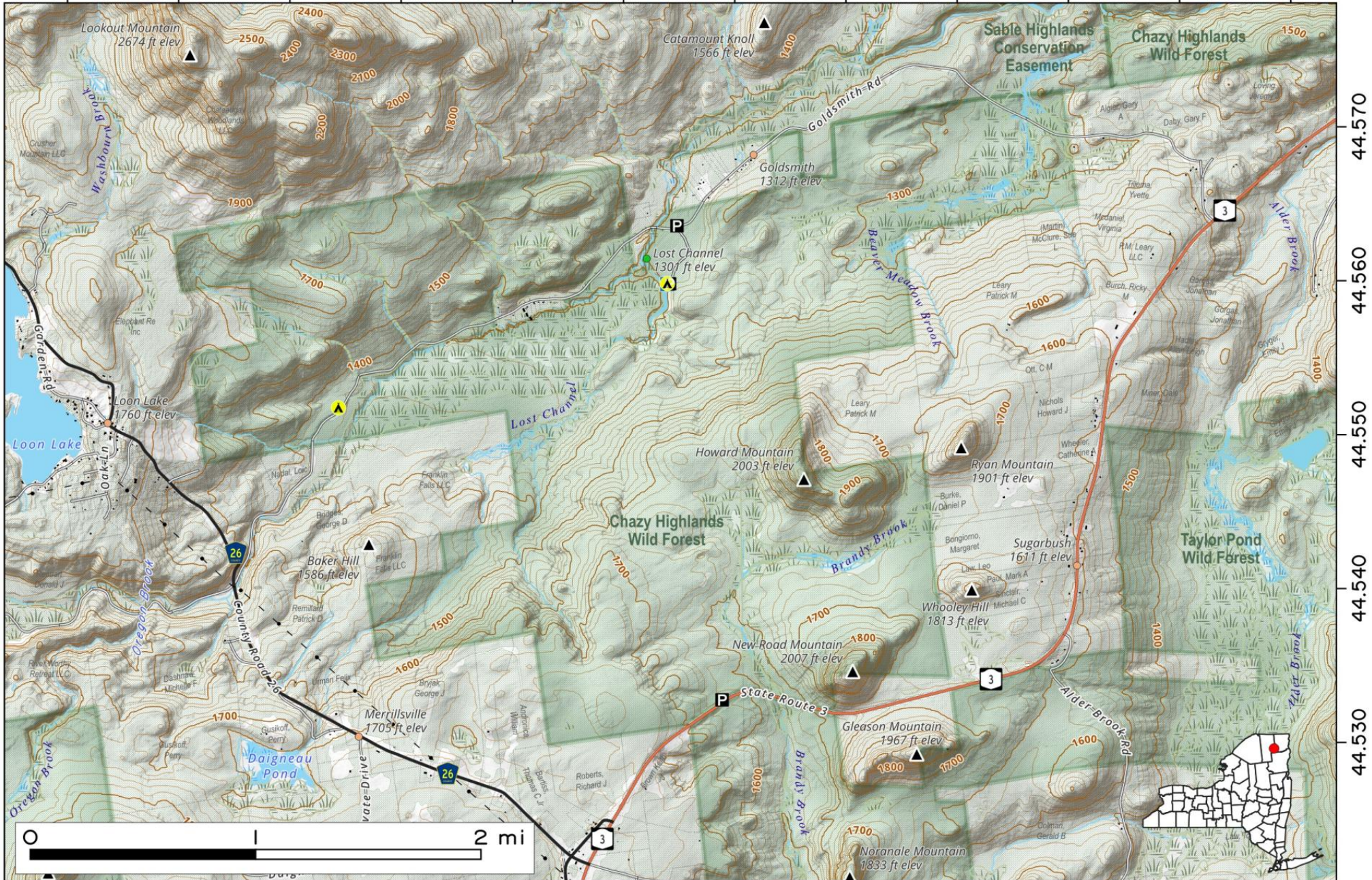


Goldmine Stream Road runs along the the North Branch of the Saranac River, forming a loop along NY 3 when looped back via CR 26. There are a few campsites and access to the North Branch along this road.

Map created by Andy Arthur on 10/27/2025 in QGIS 3.44.3-Solothurn. Contains NYS GIS and DEC data with additional campsites added by Andy. More maps at andyarthur.org.



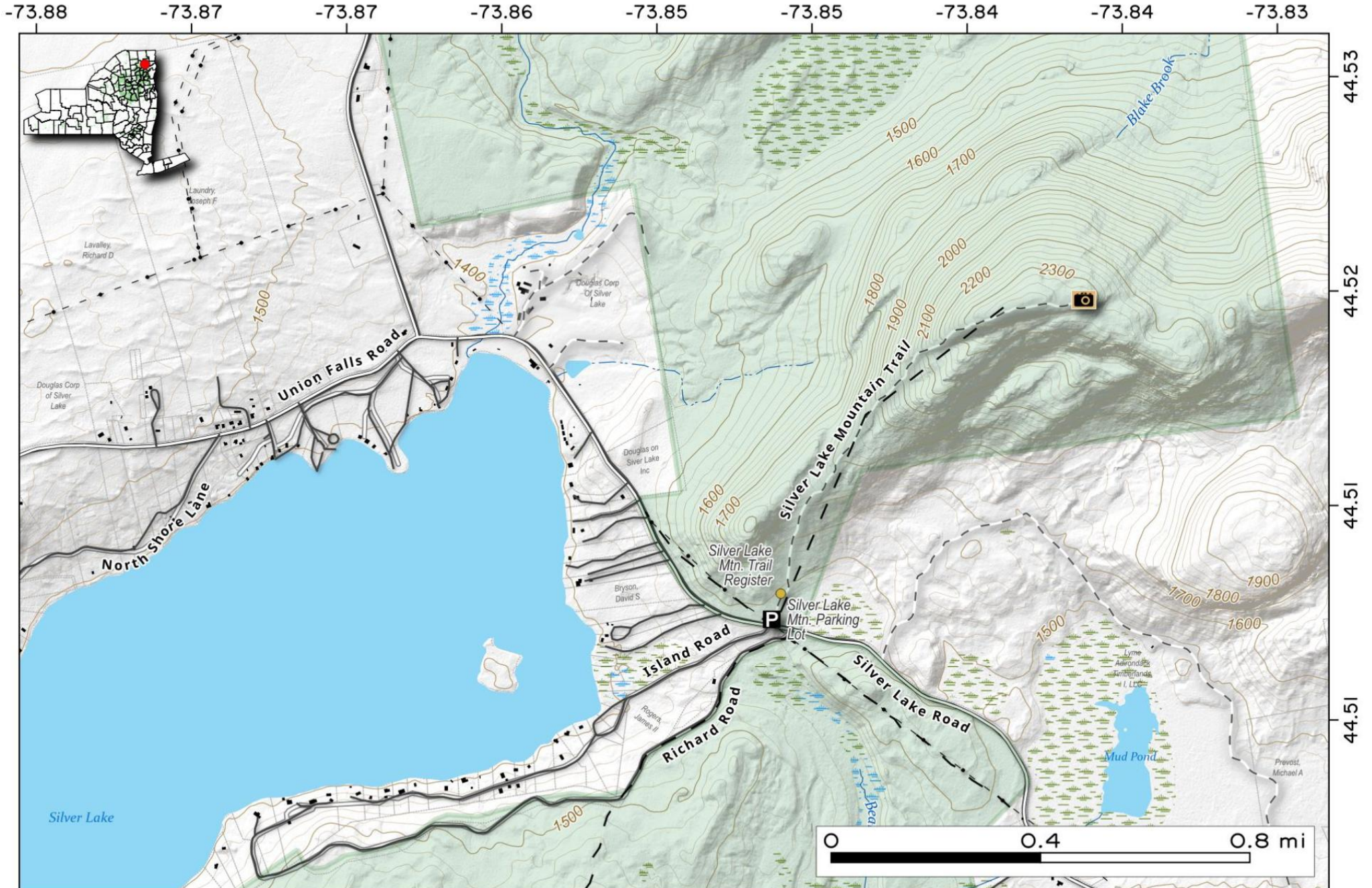
-74.060 -74.050 -74.040 -74.030 -74.020 -74.010 -74.000 -73.990 -73.980 -73.970 -73.960 -73.950



44.570
44.560
44.550
44.540
44.530

Silver Lake Mountain Trail. 1.2 mile trail near Silver Lake and Taylor Pond that overlooks Silver Lake and High Peaks of the Adirondacks.

Map created by Andy Arthur on 4/17/2025 in QGIS 3.34.15-Prizren. Contains US Forest Service Base Map, NYS DEC data with additional campsites added by Andy. More maps at andyarthur.org.



Taylor Pond. There is a 9-mile loop around Taylor Pond with several lean-tos and primitive campsites, starting at Neslon Road and looping back around to the developed (pay) campground.

Map created by Andy Arthur on 1/9/2026 in QGIS 3.44.6-Solothurn. Contains NYS GIS and DEC data with additional campsites added by Andy. More maps at andyarthur.org.

