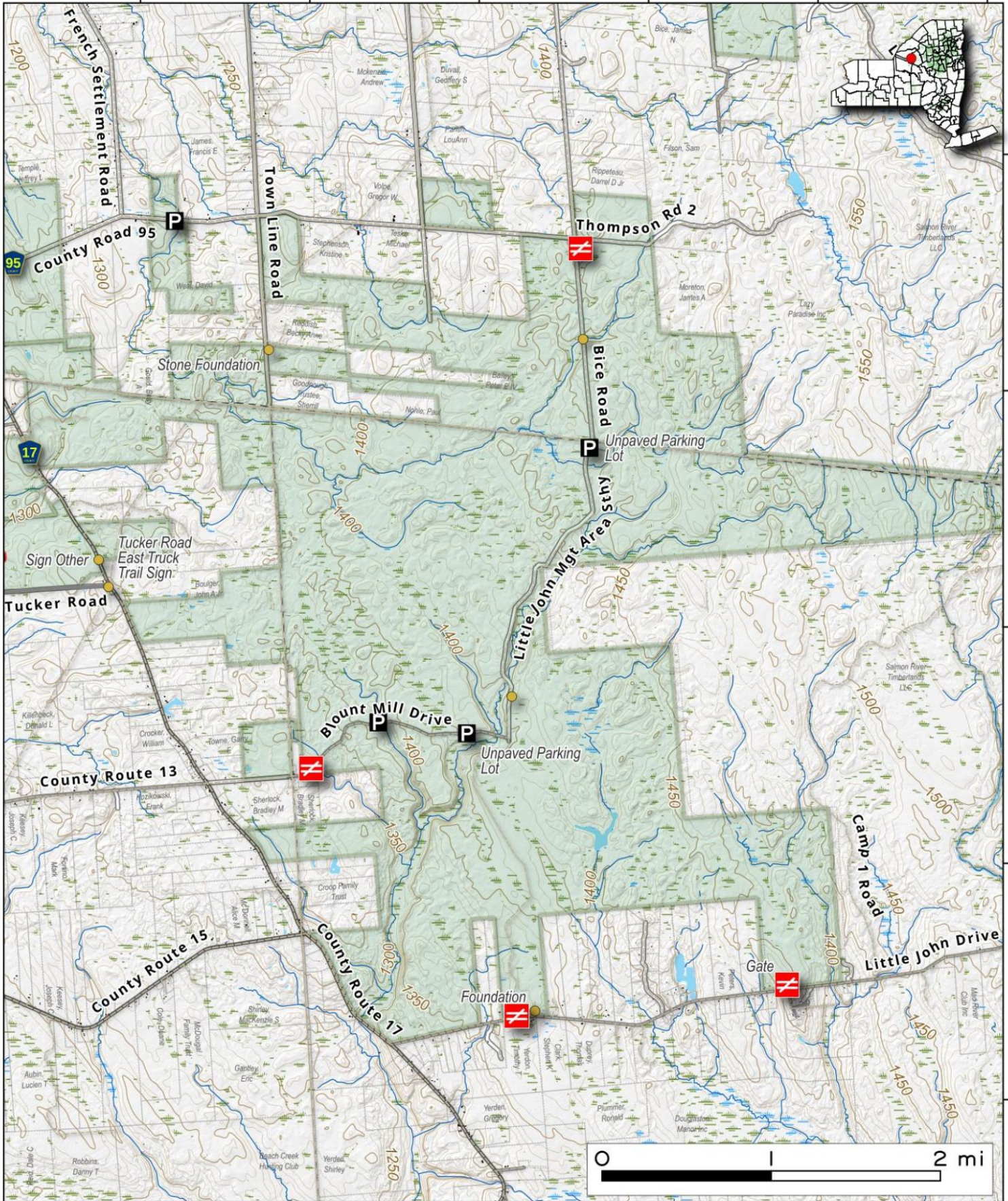


Littlejohn WMA . Located to east of Winoa State Forest, the 7,500 acre Littlejohn WMA covers a large section of western part of Tug Hill.

Map created by Andy Arthur on 3/26/2025 in QGIS 3.34.15-Prizren. Contains US Forest Service Base Map, NYS DEC data with additional campsites added by Andy. More maps at andyarthur.org.

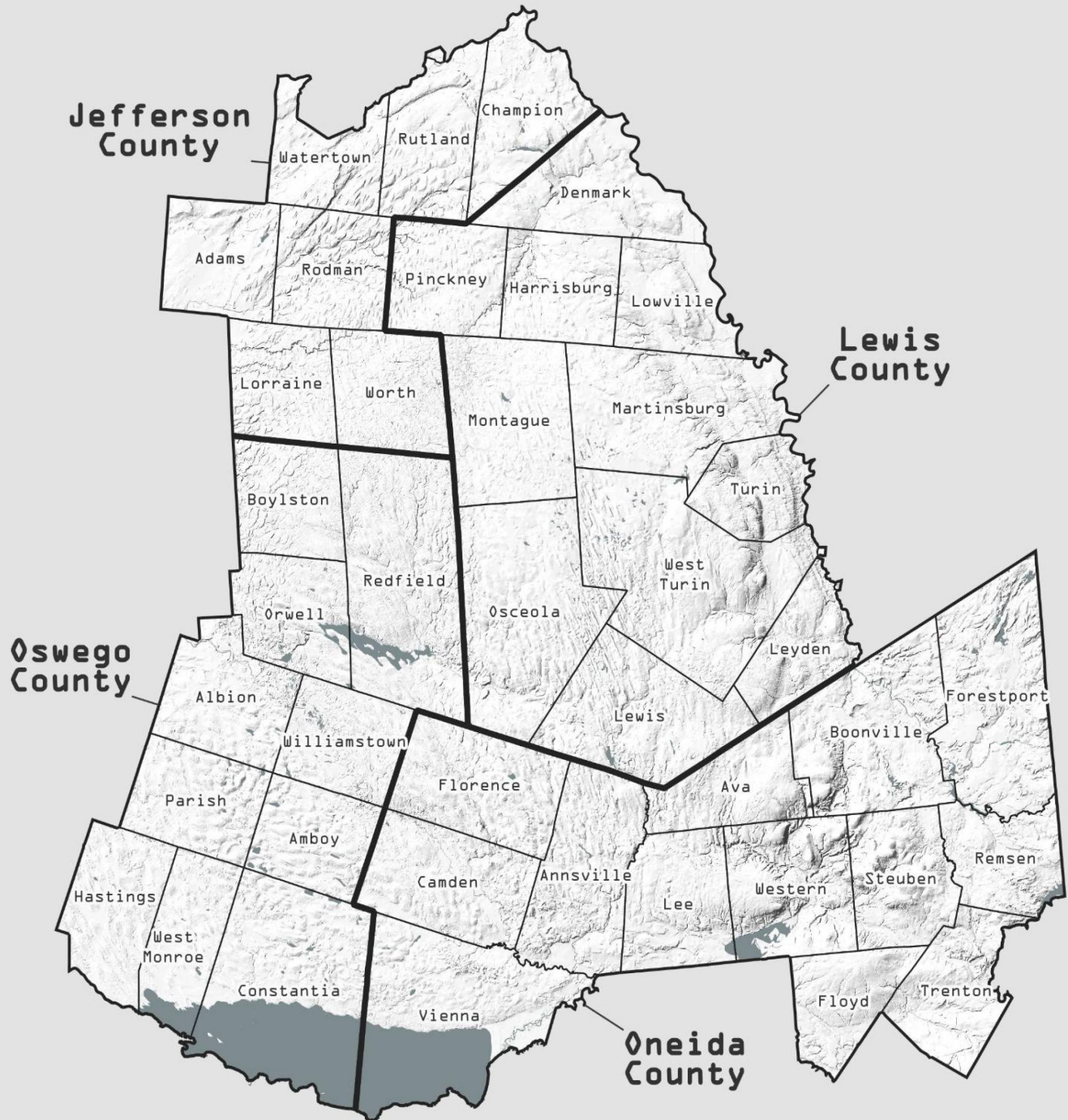


-75.92 -75.90 -75.88 -75.86 -75.84 -75.82



43.72
43.70
43.68
43.66
43.64

Towns of the Tug Hill Region of New York State



Map by Andy Arthur
November 19, 2025 - GIS Day
Free for any use!